

# RISD MUSEUM

*Intermission*, December 16, 2016-July 2, 2017

*A temporary pause in a performance, a break from business as usual.*

During the renovation of the Museum's European Galleries, select works from the 1100s through the 1800s are on view in this open-storage presentation, offering opportunities for chance encounters and unintentional juxtapositions. Information about each work—including its maker, medium, and date—can be found at [www.risdmuseum.org/intermission](http://www.risdmuseum.org/intermission).

When the European Galleries reopen in Fall 2017, the collection will be displayed to reflect the issues, materials, and processes that shaped artistic production. Works of art from the Middle East and Asia will appear alongside European works, demonstrating how artists translated new knowledge about the world. This continues the RISD Museum's reinterpretation project, initiated in 2009, which has included new installations for art from Asia, ancient Greece and Rome, and ancient Egypt, as well as for costumes and textiles.

## CHECKLIST OF THE EXHIBITION

Joost Cornelisz. Droochsloot  
Dutch, 1586-1666  
*Village Festival*, 1659  
oil paint  
Bequest of Mr. Charles L. Pendleton 04.144



After Pierre-Paul Prud'hon  
French, 1758-1823  
previous attribution Adolph Ulrich Wertmüller  
Swedish, 1751-1811  
*Portrait of Madame Jarre*, 1821  
Oil on canvas  
Bequest of Mr. Charles L. Pendleton 04.166



# RISD MUSEUM

Domenico Gagini  
Italian, ca. 1425-1492; ca. 1420 - 1492  
previous attribution Antonello Gagini  
Italian, 1478-1536  
*Tabernacle*, ca. 1460-1470  
Marble  
Gift of Mrs. Gustav Radeke 06.057



Marco Basaiti  
Greek, active Italy, ca. 1470-ca. 1530  
*Portrait of a Gentleman*, ca. 1510  
Oil on panel  
Gift of Manton B. Metcalf 16.235



Andrea Previtali  
Italian, ca. 1470-1528  
*Risen Christ*, ca. 1510  
Tempera on panel  
Gift of Manton B. Metcalf 16.237



# RISD MUSEUM

Spinello Aretino  
previous attribution Lorenzo di Niccolò  
Italian, fl. 1391-1411  
*St. Anthony Abbot Enthroned*, ca. 1385  
Tempera and gold on panel  
Gift of Jesse H. Metcalf 16.243



Mirabello Cavalori  
Italian, ca. 1530-1572  
*Annunciate Virgin*, ca. 1560  
Oil on panel  
Lyra Brown Nickerson Bequest 16.464X



# RISD MUSEUM

Aert de Gelder  
Dutch, 1645-1727  
*Esther and Mordecai*, ca. 1685  
Oil on canvas  
Museum Appropriation Fund 17.138



Mariotto di Nardo  
Italian, fl. 1394-1424; Active ca. 1394 - 1424  
*Martyrdom of Saint Lawrence*, ca. 1408  
Tempera and gold on panel  
Museum Appropriation Fund 17.520



Mariotto di Nardo  
Italian, fl. 1394-1424; Active ca. 1394 - 1424  
*Saint Francis Receiving the Stigmata*, ca. 1408  
Tempera and gold on panel  
Museum Appropriation Fund 17.521



Francisco Collantes  
Spanish, 1599-1656  
*Hagar and Ishmael*, ca. 1640  
Oil on canvas  
Gift of Manton B. Metcalf 18.096



Charles-Alexis Apoil  
French, 1809-1864  
*Portrait of an Artist and his Son*, 1854  
Oil on canvas  
Museum purchase: Gift of the Museum Associates 1986.156



# RISD MUSEUM

Thomas Couture  
French, 1815-1879  
*Gamin*, ca. 1850-1860  
Oil on canvas  
Gift of Mrs. Houghton P. Metcalf, Sr. 1986.207.2



Louise-Joséphine Sarazin de Belmont  
French, 1790 - 1871  
*A View of Paris from the Louvre*, 1835  
Oil on canvas  
Helen M. Danforth Acquisition Fund 1987.056



Lieve Verschuir  
Dutch, ca. 1630-1686  
*Harbor Scene*, ca. 1670-1680  
Oil on canvas  
Gift of the Wunsch Foundation, Inc. 1987.113.1



Martin Ferdinand Quadal  
Moravian, 1736-1811  
*Self Portrait*, ca. 1785  
Oil on canvas  
Gift of the Wunsch Foundation, Inc. 1987.113.2



# RISD MUSEUM

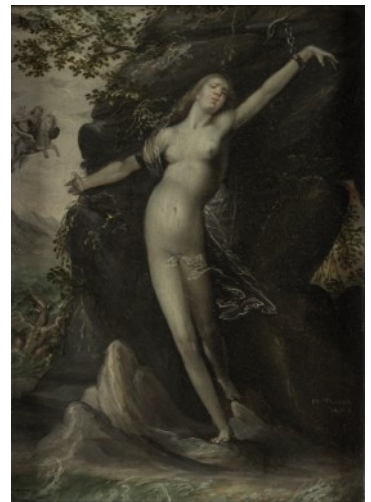
After Amable-Louis-Claude Pagnest  
French, 1790-1819  
*Study of a Male Torso*, ca. 1813  
Oil on canvas  
Gift of the Wunsch Foundation, Inc. 1987.113.3



Nicolaes Maes  
Dutch, 1634-1693  
*Portrait of a Woman*, 1675  
Oil on canvas  
Gift of the Wunsch Foundation, Inc. 1987.113.4



Jan Thilens  
Flemish, 1589-1630  
*Perseus Freeing Andromeda*, ca. 1610  
Oil on panel  
Gift of the Wunsch Foundation, Inc. 1989.124.1

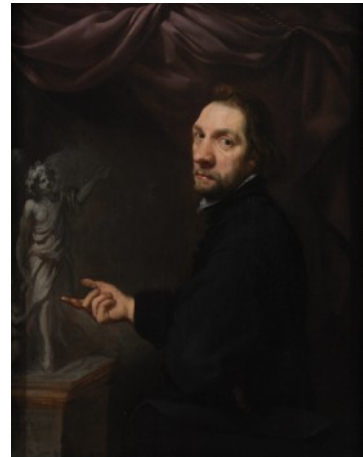


# RISD MUSEUM

Tadeusz Kuntze  
Polish, ca. 1733-1793  
*The Entombment of Christ*, ca. 1770-1780  
Oil on canvas  
Gift of the Wunsch Foundation, Inc. 1990.094



Jeanne Vergouwen  
Flemish, 1630-1714  
*Portrait of Andries Rademaker, Notary, Displaying a Statuette*, 1656  
Oil on panel  
Gift of the Wunsch Americana Foundation, Inc. 1990.107



Charles-Henri-Joseph Cordier  
French, 1827-1905  
*African Venus*, 1851  
Bronze with silver and gold patination  
Jesse Metcalf Fund 1995.013

Modeled from life in the artist's studio in Paris, this sculpture would have appealed to predominantly European audiences drawn to exoticized versions of other cultures. The model's heavy-lidded eyes, parted lips, and lightweight drapery reinforce such stereotypes, but the realism and carriage of her head create a strong impression of individuality and dignity.

Cordier's sculptures often incorporated colored stone and precious metal finishes. Here, warm skin tones are evoked by the use of a fine silver patina over the bronze cast.



# RISD MUSEUM

Jacob Adriaensz. Bellevois  
Dutch, 1621-1676  
*Harbor Scene*, ca. 1653  
Oil on panel  
Bequest of Isabelle Reynolds 1998.96



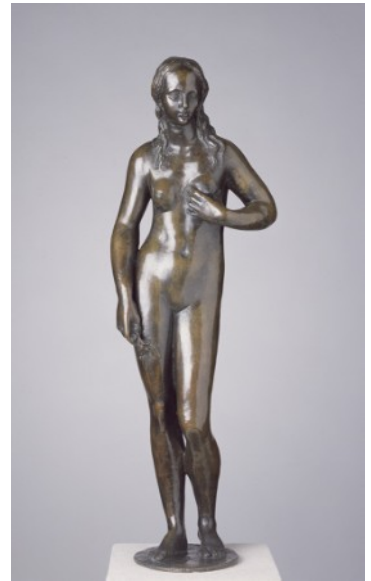
Théodore Rousseau  
French, 1812-1867  
*Valley of the Seine*, ca. 1831-1832  
Oil on panel  
Gift of Miss Ruth Ely 20.071



Peter Vischer the Elder  
German, ca. 1460-1529  
previous attribution Georg Vischer  
German, 1520-1592  
*Fertility*, ca. 1550  
Bronze  
Museum Acquisition Fund and gift of friends 20.139

This nude female reflects the influence of Italianate, classical ideals of beauty in northern Europe and particularly Nuremberg, Germany, where Vischer's family ran a bronze foundry. The figure holds a branch with a nut in her right hand and gently squeezes her breast with her left, gestures that together symbolize fertility.

During the Renaissance, wealthy collectors prized small bronzes such as this because they evoked similar statues made in ancient Greece and Rome. Bronze figures were admired for their graceful lines and layered, dark lacquers. Such a precious object would have been displayed in a room dedicated to intellectual pursuits and full of private possessions, mostly secular in nature.





# RISD MUSEUM

Bartolo di Fredi Cini  
Italian, active in Siena by 1353  
*Madonna and Child*, ca. 1380  
Tempera and gold on panel  
Anonymous gift 20.207



Karel Dujardin  
Dutch, ca. 1622-1678  
*Landscape with Ruins*, 1600s  
Oil paint  
Gift of Virginia W. Hoppin in memory of William H. Hoppin 20.230



Alfred-Émile-Léopold-Joseph-Victor Stevens  
Belgian, 1823-1906  
*The First Day of Devotion (Interior of a Pawnbroker's Shop)*, 1854  
Oil on panel  
Gift of Mrs. Gustav Radeke 20.288



Hendrick van Steenwyck the Elder  
Flemish, ca. 1550-1603  
*Interior of Aachen Cathedral*, 1575  
Oil on panel  
Gift of Drs. Arnold-Peter C. and Yvonne S. Weiss 2000.25



# RISD MUSEUM

Jacques-Luc Barbier-Walbonne

French, 1769-1860

*Portrait of Antoine-Georges-François de Chabaud-Latour and his Family, 1806*

Oil on canvas

Helen M. Danforth Acquisition Fund 2003.105



Honoré Daumier

French, 1808-1879

*Au Palais de Justice (At the Law Courts), ca. 1863-1867*

Oil on panel

Gift of Mrs. Anne K. Jones in honor of her son Peter C. Jones, RISD

Class of 1974 2007.113



Adèle Romany

French, 1769-1846

*Portrait of Auguste Vestris, 1793*

Oil on canvas

Purchased with the Edith C. Erlenmeyer Bequest and the Helen M. Danforth Acquisition Fund 2009.9



# RISD MUSEUM

Jean-Auguste-Dominique Ingres

French, 1780-1867

*Studies of a Head of a Man, Hands of Saint John for Christ Offering  
Saint Peter the Keys to Paradise, and Hooded Capuchin monk, ca.1817  
- 1820*

Oil on canvas

Purchased with funds from the Bequest of Maria Dasdagulian in  
honor of Joseph Fazzano 2012.1



Jean-Baptiste Greuze

French, 1725-1805

*Portrait of a Young Woman, ca. 1760*

Oil on canvas

Museum purchase in memory of Estise Mauran; Helen M. Danforth  
Acquisition Fund 2015.83



Lippo Memmi

Italian, Active 1317- ca. 1350; fl. 1317-1347

*Mary Magdalene, ca. 1330*

Tempera and gold on panel

Museum Appropriation Fund 21.250



# RISD MUSEUM

Cornelis de Vos  
Flemish, 1584 - 1667  
*Portrait of a Young Girl*, ca. 1633-1635  
Oil on canvas  
Gift of Manton B. Metcalf 21.404



Netherlandish  
*The Adoration of the Magi*, ca. 1510  
Oil on wood panel  
Gift of Manton B. Metcalf 21.482



Jacopo di Cione  
Italian, ca. 1330- 1398  
*The Taking of Saint Peter*, 1370-1371  
Tempera and gold on panel  
Gift of Manton B. Metcalf 22.047



Andrea Delitio  
Italian, 15th century; active ca. 1440 - 1480  
*King Totila Blessed by Saint Benedict*, ca.1451  
Tempera and gold on panel  
Museum Appropriation Fund 22.101



# RISD MUSEUM

Auguste Rodin

French, 1840-1917

*The Hand of God*, designed ca. 1898; carving completed ca. 1917

Marble

Museum Appropriation Fund 23.005

The hand emerging from this block of rough-hewn marble represents the hand of God forming Adam and Eve. Its scale and energy contrast dramatically with the delicate bodies intertwined in a primal embrace, connecting Rodin's interests in realism and symbolism. While evoking the act of a divine creator, Rodin also suggests his own identity as an artist and worker whose hand models life from stone.



One of three known marble versions, this work was purchased directly from Rodin by the Rhode Island industrialist and politician Samuel P. Colt and acquired by the Museum after Colt's death.

Jean Louis Forain

French, 1852-1931

*Courtroom Scene*, ca. 1904-1910

oil paint

Gift of Stephen O. Metcalf, George Pierce Metcalf, and Houghton P. Metcalf 23.316



Flemish

*Portrait of a Boy*, 1600s

Oil on canvas

Gift of Dr. and Mrs. Edward M. Harris 23.321



# RISD MUSEUM

Aert de Gelder  
Dutch, 1645-1727  
*Portrait of an Old Man*, ca. 1680-1685  
Oil on canvas  
Gift of Dr. and Mrs. Edward M. Harris 23.330



Jan Cossiers  
Flemish, 1600-1671  
previous attribution Gaspar de Crayer  
Flemish, 1584-1669  
*The Supper at Emmaus*, ca. 1650  
Oil on canvas  
Gift of Dr. and Mrs. Edward M. Harris 23.332



Jean-Baptiste-Camille Corot  
French, 1796-1875  
*Banks of a River Dominated in the Distance by Hills*, ca. 1871-1873  
Oil on canvas  
Museum Appropriation Fund 24.089



Marinus van Reymerswaele  
Flemish, ca. 1490-ca. 1567  
*The Money Changers*, ca. 1540  
Oil on panel  
Gift of Mrs. Jesse H. Metcalf 25.037



# RISD MUSEUM

Hyacinthe Rigaud

French, 1659-1743

*Portrait of Louis of France, The Grand Dauphin (1661-1711), ca. 1697-1721*

Oil on canvas

Gift of Mrs. Gustav Radeke 30.027



Attributed to Domenico Brusaporci

Italian, ca. 1515-1567

*Portrait of a Woman, ca. 1550-1559*

Oil on canvas

Museum Appropriation Fund 30.057



Giovanni Battista Tiepolo

Italian, 1696-1770

*The Angel of Fame, ca. 1750*

Fresco, mounted on canvas

Museum Appropriation Fund 32.246



Salomon van Ruysdael

Dutch, ca. 1600-1670

*The Ferry Boat, 1645*

Oil on canvas

Museum Appropriation Fund 33.204



# RISD MUSEUM

Pietro Longhi  
Italian, ca. 1700-1785  
*A Meal at Home*, ca. 1753  
Oil on canvas  
Museum Appropriation Fund 34.1371



Attributed to Willem Claesz. Heda  
Dutch, 1594-ca. 1680  
*Still Life*, 1600s  
Oil on canvas  
Museum Appropriation Fund 34.778



Eugène Delacroix  
French, 1798-1863  
*Arabs Traveling*, 1855  
Oil on canvas  
Museum Appropriation Fund 35.786



Domenico Fetti  
Italian, ca. 1589-1623  
*Christ Ministered To by the Angels*, ca. 1620  
Oil on canvas  
Museum Appropriation Fund 36.003





# RISD MUSEUM

Attributed to Jan van Huysum

Dutch, 1682-1749

*Still Life with Flowers*, ca. 1715-1730

Oil on canvas

Gift of D. Berkeley Updike in memory of Elisabeth Bigelow Updike  
36.018



Hubert Robert

French, 1733-1808

*Architectural Fantasy*, ca. 1802-1808

Oil on canvas

Museum Appropriation Fund 37.104



Italian; Sienese, (Siena or Pisa)

*Angel of the Annunciation*, ca. 1350

Wood with polychromy (colored paint)

Museum Appropriation Fund 37.114



# RISD MUSEUM

Joseph Chinard  
French, 1756-1813  
*Bust of Madame Récamier*, after 1801  
Marble  
Gift of Mrs. Harold Brown 37.201



Gabriel Jacques de Saint-Aubin  
French, 1724-1780  
*Daybreak*, ca. 1760  
Oil on canvas  
Museum Appropriation Fund 38.147



Jan Siberechts  
Flemish, 1627-ca. 1703  
previous attribution Karel Dujardin  
Dutch, ca. 1622-1678  
*Landscape*, ca. 1660  
Oil on canvas  
Museum Appropriation Fund 39.045



Attributed to Paul Brill  
Netherlandish, ca. 1554-1626  
*Self-Portrait*, ca. 1595-1600  
Oil on canvas  
Museum Appropriation Fund 39.046



# RISD MUSEUM

Benin (ancient Nigerian style)  
*Head of a king (Oba)*, probably 1700s  
Bronze  
Gift of Miss Lucy T. Aldrich 39.054

For centuries, commemorative heads such as this example were assembled in memorial shrines honoring former kings of Benin. These heads were not individualized portraits, but embodied the idea of kingship, honored the achievements of the deceased, and connected the reigning king (or oba) with his ancestors. They also testified to the technical mastery and artistic accomplishment of Benin artists over the ages. A strong tradition of casting continues today in Nigeria's Benin City.

In 1897, British colonial forces sacked the Benin palace, taking historical heads such as this one and sending the reigning king into exile. The role of the oba was restored in 1914, and since then the display of commemorative heads has continued in the reconstructed royal palace.

Anglo; Flemish  
*Portrait of a Lady of the Hampden Family*, ca. 1610  
Oil on canvas  
Gift of Miss Lucy T. Aldrich 42.283

Jean-Baptiste-Camille Corot  
French, 1796-1875  
*Honfleur*, 1830  
Oil on canvas  
Museum Works of Art Fund 43.007



# RISD MUSEUM

Jean-Louis-André-Théodore Géricault  
French, 1791-1824  
*A Cart Loaded with Kegs*, ca.1822-1823  
Oil on canvas  
Museum Works of Art Fund 43.539



Gustave Courbet  
French, 1819-1877  
*Jura Landscape*, 1869  
Oil on canvas  
Museum Appropriation Fund, by exchange and Walter H. Kimbell  
Fund 43.571



Attributed to Pier-Leone Ghezzi  
Italian, 1674-1755  
*A Musical Group*, ca. 1730  
Oil on canvas  
Museum Appropriation Fund 44.161



Giambologna  
Flemish, 1529-1608  
*River God (The Virile Age; The Euphrates)*, ca. 1575  
Terracotta  
Museum Works of Art Fund and Museum Special Reserve Fund  
44.674



# RISD MUSEUM

Bruges Master  
Netherlandish, active late 15th century  
previous attribution Master of the Legend of Saint Ursula  
*Portrait of a Cleric*, ca. 1490

Oil on panel

Museum purchase with funds from Mrs. Gustav Radeke, Manton B. Metcalf, Museum Works of Art Fund and Museum Appropriation Fund, by exchange, and Museum Special Reserve Fund 45.042



Attributed to Andrea Locatelli  
Italian, 1695-1741

*Sabine Mountains*, ca. 1730

Oil on canvas

Gift of Mr. Morgan W. Rogers in memory of Lucy B. Rogers 49.124



Sébastien Bourdon

French, 1616-1671

*Landscape with a Mill*, ca. 1653-1657

Oil on canvas

Mary B. Jackson Fund 51.506



Francesco Bassano II

Italian, 1549-1592

*The Birth of the Virgin*, ca. 1588

Oil on canvas

Mary B. Jackson Fund 52.318



# RISD MUSEUM

Francesco Guardi

Italian, 1712-1793

*Scuola di San Marco with Loggia Erected for Benediction of Pope Pius VI May 19, 1782, Campo San Zanipolo, ca. 1782*

Oil on canvas

Gift of Mrs. Murray S. Danforth 53.115



Domenico Tintoretto

Italian, 1560-1635

*Sketch for a Battle Scene: Tancred and Clorinda, ca. 1586-1600*

Oil on canvas

Mary B. Jackson Fund 53.122



Edward Matthew Ward

English, 1816-1879

*A Game of Charades, ca. 1840*

Oil on canvas

Museum Works of Art Fund 53.129



# RISD MUSEUM

Joshua Reynolds  
English, 1723-1792  
*A Caricature Group: Sir Charles Turner, Mr. Cook, Mr. John  
Woodyeare, and Rev. Dr. William Drake, ca. 1751*  
Oil on canvas  
Gift of Mrs. Murray S. Danforth 53.349



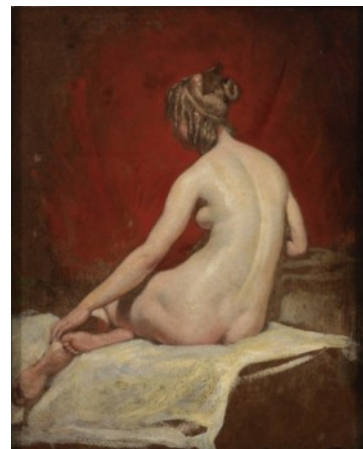
Jean-Baptiste Carpeaux  
French, 1827-1875  
*Bathers, ca. 1870*  
Oil on canvas  
Mary B. Jackson Fund in memory of L. Earle Rowe 53.350



After Pierre-Paul Prud'hon  
French, 1758-1823  
*Divine Vengeance and Justice Pursuing Crime, after 1808*  
Oil on canvas  
Gift of Mrs. Murray S. Danforth in memory of Eliza G. Radeke on the  
occasion of the 75th Anniversary of the Rhode Island School of Design  
53.371



William Etty  
English, 1787-1849  
*Seated Female Nude, ca. 1825*  
Oil on panel  
Mary B. Jackson Fund 53.422



# RISD MUSEUM

Attributed to Thomas Couture  
French, 1815-1879  
*Romans of the Decadence*, ca. 1847  
Oil on canvas  
Mary B. Jackson Fund 54.004



Attributed to Léon Cogniet  
French, 1794-1880  
French  
*Portrait of a Gentleman*, ca. 1820  
Oil on canvas  
Anonymous gift 54.041



Ippolito Scarsello, called Scarsellino  
Italian, ca. 1550-1620  
*The Rape of Europa*, ca. 1590  
Oil on canvas  
Bequest of Miss Ellen D. Sharpe 54.147.75



Attributed to Isaac de Moucheron  
Dutch, 1667-1774  
*Landscape with Fountain*, ca. 1700  
Oil on canvas  
Bequest of Miss Ellen D. Sharpe 54.147.83





# RISD MUSEUM

Nicolas Bernard Lépicie  
French, 1735-1784  
*Portrait of a Man*, ca. 1755  
Oil on canvas  
Museum Works of Art Fund 54.170



William Hoare  
English, ca. 1707-1792  
*Portrait of Philip Dormer Stanhope, Fourth Earl of Chesterfield, K. G.*,  
ca. 1742  
Oil on canvas  
Museum Works of Art Fund 54.171



James Tissot  
French, 1836-1902  
*The Dance of Death*, 1860  
Oil on canvas  
Jesse Metcalf Fund, Georgianna Sayles Aldrich Fund, Mary B. Jackson  
Fund and Edgar J. Lownes Fund 54.172



Jean-Baptiste Oudry  
French, 1686-1755  
*Dead Bird*, ca. 1740-1750  
Oil on canvas  
Jesse Metcalf Fund, Georgianna Sayles Aldrich Fund, Mary B. Jackson  
Fund, and Edgar J. Lownes Fund 54.176



# RISD MUSEUM

Dosso Dossi  
Italian, ca. 1486-ca. 1542  
*Entry into the Ark*, ca. 1520  
Oil on canvas  
Helen M. Danforth Acquisition Fund 54.177



Claudio Coello  
Spanish, 1642-1693  
*Portrait of a Monk*, ca. 1685  
Oil on canvas  
Walter H. Kimball Fund, Georgianna Sayles Aldrich Fund, Mary B. Jackson Fund, Edgar J. Lownes Fund and Jesse Metcalf Fund 54.181



Nicolas Poussin  
French, 1594-1665  
*Venus and Adonis*, ca. 1628  
Oil on canvas  
Walter H. Kimball Fund, Georgianna Sayles Aldrich Fund, Mary B. Jackson Fund, Edgar J. Lownes Fund and Jesse Metcalf Fund 54.186



Michele Rocca  
Italian, ca. 1670-ca. 1751  
*Toilet of Venus*, ca. 1750  
Oil on canvas  
Museum Works of Art Fund 55.029



# RISD MUSEUM

Giovanni Battista Gaulli, called Il Baciccio  
Italian, 1639-1709  
*Cardinal Taddeo Luigi dal Verme*, ca. 1700  
Oil on canvas  
Museum Works of Art Fund 55.106



Attributed to Domenichino  
Italian, 1581-1641  
*Landscape with Bathers*, ca. 1600-1630  
Oil on canvas  
Museum Works of Art Fund 55.107



Guido Reni  
Italian, 1575-1642  
*St. Sebastian*, ca. 1615  
Oil on canvas  
Museum Gift Fund 55.112



Francesco de Mura  
Italian, 1696-1782  
*The Sacrifice of Iphigenia*, ca. 1727  
Oil on canvas  
Museum Gift Fund 55.113



# RISD MUSEUM

Attributed to Henri Gascard  
French, 1634-1701  
*Allegorical Portrait of a Lady as Fortune*, ca. 1674-1679  
Oil on canvas  
Gift of Julius H. Weitzner 55.152



Dirck van Delen  
Dutch, 1604-1671  
*Architectural Interior at Night with the Priests of Bel*, ca. 1628  
Oil on panel  
Gift of Mr. Morris I. Kaplan 55.153.1



French  
*Console table*, ca. 1740  
Oak, gesso, gilt and marble  
Gift of Mr. Jack Linsky 56.025



Attributed to Jean Ducamps, called Giovanni del Campo  
French, 1600-1683  
Italian  
*The Flagellation of Christ*, ca. 1620  
Oil on canvas  
Museum Works of Art Fund 56.037



# RISD MUSEUM

William Etty  
English, 1787-1849  
*Back View of a Standing Male Nude in a Boat*, ca. 1818-1820  
Oil on paper mounted on panel  
Anonymous gift 56.055



Francesco Primaticcio  
Italian, 1503-1570  
*Andromache Learning of the Death of Hector*, ca. 1550  
Oil on canvas  
Museum Works of Art Fund 56.083



Edward Lear  
English, 1812-1888  
*Corfu from near the Village of Virós*, 1858  
Oil on paper mounted on canvas  
Museum purchase: gift of the Honorable Theodore Francis Green  
56.085



# RISD MUSEUM

Franz Xavier Winterhalter  
German, 1805-1873  
*Prince Arthur William at Age Seven Weeks, 1850*  
Oil on canvas  
Gift of Charles K. Lock 56.087



William Hilton II  
English, 1786-1839  
*The Triumph of the Duke of Wellington, 1817*  
Oil on canvas  
Museum Works of Art Fund 56.088



Joseph Paelinck  
Belgian, 1781-1839  
*William I, King of the Netherlands, 1817*  
Oil on canvas  
Museum Works of Art Fund 56.090A



Joseph Paelinck  
Belgian, 1781-1839  
*Frederica Wilhelmina, Queen of the Netherlands, 1817*  
Oil on canvas  
Museum Works of Art Fund 56.090B



# RISD MUSEUM

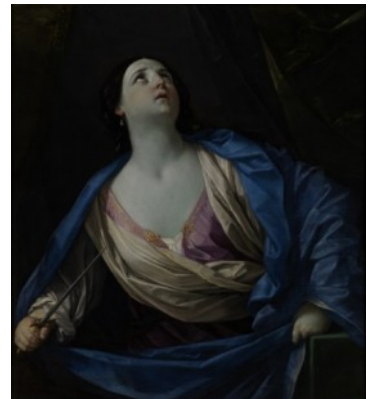
Giovanni Paolo Pannini  
Italian, 1691-1765  
*The Colosseum*, ca. 1750  
Oil on canvas  
Museum Works of Art Fund 56.094



Studio of Paolo Veronese  
Italian, 1528-1588  
*Wisdom and Strength*, ca. 1565-1580  
Oil on canvas  
Museum Works of Art Fund 56.096



Guido Reni  
Italian, 1575-1642  
*Lucretia*, ca. 1625  
Oil on canvas  
Anonymous gift 56.102



# RISD MUSEUM

Matthias Stomer  
Dutch, ca. 1600-after ca. 1650  
*Christ at the Column*, ca. 1635  
Oil on canvas  
Museum Works of Art Fund 56.177



Paul Cézanne  
French, 1839-1906  
*Study after Titian's Entombment of Christ*, ca. 1864  
Oil on paper mounted on canvas  
Gift of Julius H. Weitzner 56.178



Jean-Victor Bertin  
French, 1767-1842  
*Tivoli*, ca. 1835-1842  
Oil on canvas  
Gift of Mr. Robert R. Endicott 56.214



Artist of Fontainebleau School  
French, Active mid-1500s  
previous attribution Vincent Sellaer  
Flemish, fl. 1538-1560  
*Charity*, ca. 1550  
Oil on canvas  
Anonymous gift 57.157





# RISD MUSEUM

Jacopo Bassano  
Italian, 1510-1592  
*Sketch for an Altarpiece*, ca. 1575  
Oil on canvas  
Anonymous gift 57.158



School of Jacopo Tintoretto  
Italian, 1519-1594  
*Daniel in Judgment of the Elders*, ca. 1575  
Oil on canvas  
Anonymous gift 57.159



Danish; German  
*Snowball Fight*, ca. 1830  
Oil on canvas  
Anonymous gift 57.160



After Guido Reni  
Italian, 1575-1642  
previous attribution Jacob Jordaens the Younger  
Flemish, 1593-1678  
*Heads of Two Elders (fragment from Susannah and the Elders)*, 1600s  
Oil on canvas  
Anonymous gift 57.163



# RISD MUSEUM

Giuseppe Cesari  
Italian, 1568-1640  
*Perseus and Andromeda*, ca. 1592  
Oil on slate  
Anonymous gift 57.167



John Baptist de Medina  
Spanish/Flemish, 1659-1710  
*Self Portrait*, ca. 1700  
Oil on canvas  
Georgianna Sayles Aldrich Fund 57.228



Pompeo Girolamo Batoni  
Italian, 1708-1787  
*Portrait of a Gentleman*, ca. 1760-1765  
Oil on canvas  
Gift of Jack Linsky 57.263



# RISD MUSEUM

Anton Raphael Mengs  
German, 1728-1779  
*Portrait of an English Gentleman*, ca. 1754  
Oil on canvas  
Corporate Membership Fund 57.281



Northern European  
*Portrait of a Young Lady*, ca. 1820  
Oil on canvas  
Gift of Julius H. Weitzner 57.294



Matteo di Giovanni di Bartolo  
Italian, ca. 1430-1495  
*Virgin of the Annunciation*, ca. 1474  
Tempera and gold on wood panel  
Gift of Mr. Robert Lehman 57.301



# RISD MUSEUM

Domenico Maria Muratori  
Italian, 1661-1744  
*The Death of Cleopatra*, ca. 1720  
Oil on canvas  
Anonymous gift 58.088



William Powell Frith  
English, 1819-1909  
*The Salon d'Or, Homburg*, 1871  
Oil on canvas  
Gift of Mr. Walter Lowry 58.162



Netherlandish; Possibly  
*Madonna and Child with Saint Barbara and Saint Catherine*, ca. 1525  
Oil on panel  
Museum Works of Art Fund 58.196



John Constable  
English, 1776-1837  
*Portrait of Mrs. Edwards*, ca. 1818  
Oil on canvas  
Corporate Membership Fund 58.197



# RISD MUSEUM

After Carlo Maratti  
Italian, 1625-1713  
*Cleopatra*, ca. 1695  
Oil on canvas mounted on cardboard  
Museum Works of Art Fund 59.007



Georges Michel  
French, 1763-1843  
*Landscape*, after 1827  
Oil on canvas  
Gift of Miss Hope Smith and Brockholst M. Smith in memory of the  
Honorable Royal C. Taft 59.032



Luca Cambiaso  
Italian, 1527-1585  
*Pietà with Angels*, ca. 1575  
Oil on canvas  
Mary B. Jackson Fund 59.049



# RISD MUSEUM

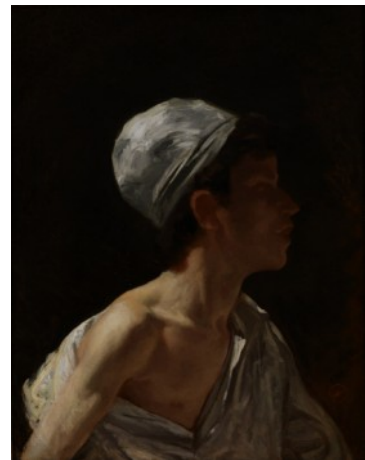
Adriaen van der Werff  
Dutch, 1659-1722  
*The Expulsion of Hagar and Ishmael*, ca. 1699  
Oil on canvas  
Helen M. Danforth Acquisition Fund 59.063



Pompeo Girolamo Batoni  
Italian, 1708-1787  
*Time Revealing Truth*, ca. 1740-1745  
Oil on canvas  
Helen M. Danforth Acquisition Fund 59.065



Mariano José María Bernardo Fortuny y Carbó  
Spanish, 1838-1874  
*Bust of an Arab Boy in Profile*, 1860-1869  
Oil on canvas  
Helen M. Danforth Acquisition Fund 59.066



# RISD MUSEUM

Dutch; Flemish  
*The Young Huntresses*, late 1600s  
Oil on canvas  
Gift of Mr. and Mrs. Arthur L. Erlanger 59.109



Tilman Riemenschneider  
German, 1460-1531  
*Pietà*, ca. 1515-1525  
Linden wood  
Museum Works of Art Fund 59.128



Édouard Frédéric Wilhelm Richter  
French, 1844-1913  
*Lady Standing before an Open Window*, 1862  
Oil on canvas  
Helen M. Danforth Acquisition Fund 60.003



# RISD MUSEUM

Thomas Lawrence  
English, 1769-1830  
*Portrait of Lady Sarah Ingestre*, ca. 1827-1828  
Oil on canvas  
Museum Works of Art Fund 60.039



Pieter Lastman  
Dutch, 1583-1633  
*Saint Matthew*, 1613  
Oil on oak panel  
Corporate Membership Dues Funds 60.093



Jacob Jordaens the Younger  
Flemish, 1593-1678  
*Return of the Holy Family from Egypt*, ca. 1615-1616  
Oil on canvas  
Museum Works of Art Fund 60.094





# RISD MUSEUM

French

*Angel with Crown and Flagellum*, ca. 1460

Oil on panel

Anonymous gift 60.105



Michele Pace del Campidoglio

Italian, ca. 1610-ca. 1670

previous attribution Abraham Brueghel

Flemish, 1631-1690

*Still Life with Figure*, ca. 1660

Oil on canvas

Mary B. Jackson Fund 60.107



Paulus Moreelse

Dutch, 1571-1638

*Portrait of Antoine van Hilten*, 1625

Oil on canvas

Gift of Mr. and Mrs. Winthrop W. Aldrich 60.110



# RISD MUSEUM

Hendrick Goltzius  
Dutch, 1558-1617  
*Christ on the Cold Stone with Two Angels*, 1602  
Oil on copper  
Museum Gift Fund, Museum Works of Art Fund and Corporate  
Membership Fund 61.006



Attributed to Hillebrant van Rewijk  
Netherlandish, 1455 - 1470  
previous attribution Master of the Providence Crucifixion  
Netherlandish, fl. 1450-1460; ca. 1450 - 1460  
*The Crucifixion with Two Thieves*, ca. 1450-1460  
Oil on panel  
Georgianna Sayles Aldrich, Mary B. Jackson, Jesse Metcalf, Edgar J.  
Lownes, Walter H. Kimball, Corporation Membership and Helen M.  
Danforth Acquisition Funds 61.080



Rev. Matthew William Peters  
English, 1742-1814  
*Lydia*, ca. 1776  
Oil on canvas  
Gift of Mrs. Guy Fairfax Cary 62.009



# RISD MUSEUM

Benjamin Gerritsz. Cuyper  
Dutch, 1612-1652  
*The Resurrection of Christ*, ca. 1640  
Oil on panel  
Georgianna Sayles Aldrich and Mary B. Jackson Funds 62.019



Joachim Antonisz. Wtewael  
Dutch, 1566-1638  
*The Marriage of Peleus and Thetis*, 1610  
Oil on panel  
Mary B. Jackson Fund 62.058



Antonio González Velázquez I  
Spanish, 1723-1793  
*Venus at the Forge of Vulcan Obtaining Arms for Aeneas*, ca. 1753  
Oil on canvas  
Helen M. Danforth Acquisition Fund 62.062



# RISD MUSEUM

Bartolomeo Passarotti  
Italian, 1529-1592  
*Portrait of a Cavalier with His Hunting Dogs*, ca. 1570-1580  
Oil on canvas  
Corporate Membership Fund 62.064



Eugène Isabey  
French, 1803-1886  
*Shipwreck*, ca. 1850-1855  
Oil on canvas  
Gift of Group 104 62.085



Italian  
*Floral Still Life with Ruins and Urns*, 1700s  
Oil on canvas  
Gift of the Estate of William E. Brigham 63.011.482



Italian  
*Floral Still Life with Ruins and Urns*, 1700s  
Oil on canvas  
Gift of the Estate of William E. Brigham 63.011.483



# RISD MUSEUM

Alonso Miguel de Tovar  
Spanish, 1678-1758  
*Portrait of a Gentleman of the Mendoza y de la Vega Family*, 1711  
Oil on canvas  
Gift of Mrs. Edwin Binney, Jr. and Mr. and Mrs. Edwin Binney III  
63.034



Alessandro Magnasco  
Italian, 1667-1749  
*Arsenal in a Ruined Basilica*, ca. 1711-1720  
Oil on canvas  
Museum Works of Art Fund, Museum Membership Fund, Georgiana  
Sayles Aldrich Fund, Mary B. Jackson Fund, Edgar J. Lownes Fund,  
Walter H. Kimball Fund, Jesse Metcalf Fund, and Museum Gift Fund  
63.061



Abraham Hendricksz. van Beyeren  
Dutch, ca. 1620-1690  
*Still Life of Fish*, ca. 1655  
Oil on canvas  
Helen M. Danforth Acquisition Fund and gift of Group 104 64.035



Attributed to François Boucher  
French, 1703-1770  
*Bird-Catching Cherubs (Summer) L'Amour Oiseleur (L'Été)*, 1732-1733  
Oil on canvas  
Anonymous gift 64.115



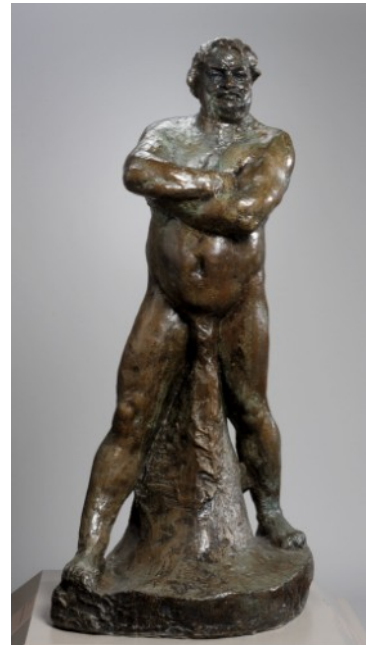
# RISD MUSEUM

Jean-Jacques Henner  
French, 1829-1905  
*Idyll*, ca. 1872  
Oil on canvas  
Endowed Membership Fund 66.025



Auguste Rodin  
French, 1840-1917  
*Study for the Monument to Balzac*, 1892  
Bronze  
Museum purchase with funds donated by the Museum Associates,  
Museum Members and Friends 66.057

This sculpture portrays French novelist Honoré de Balzac (1799–1850) as a nude, corpulent figure in the stance of a wrestler. In 1891 Rodin was commissioned to make a statue of the author, to be installed at the Théâtre Français in Paris. Rodin immersed himself in Balzac's writings, which were known for unvarnished descriptions of character, then examined photographs of Balzac, measured his clothing, and studied people of his native region in an effort to create a monument that exemplified the piercing realism of Balzac's own work. Expecting a more dignified result, the sculpture's sponsors were shocked by this confrontational portrait, and rejected it.



Jean-Léon Gérôme  
French, 1824-1904  
*Moorish Bath*, ca. 1874-1877  
Oil on canvas  
Museum Membership Fund 66.280



# RISD MUSEUM

Matteo Rosselli  
Italian, 1578-1650  
*Joseph Sold to the Ishmaelites*, ca. 1630  
Oil on canvas  
Museum Works of Art Fund 66.310



Wilhelm Frederik van Royen  
Dutch, 1645-1723  
*The Young Hunter*, ca. 1706  
Oil on canvas  
Museum Membership Fund 67.009



Cornelis Cornelisz. van Haarlem  
Dutch, 1562-1638  
*The Judgment of Paris*, ca. 1585-1595  
Oil on panel  
Museum Membership Fund 67.010



Dirck van Delen  
Dutch, 1604-1671  
*Architectural Scene: A Palace Court*, 1627  
Oil on panel  
Gift of Mr. and Mrs. H.L. Weller 67.102



Melchior d' Hondecoeter  
Dutch, 1636-1695  
*Cocks Fighting*, ca. 1663-1664  
Oil on canvas  
Gift of Mr. and Mrs. Norman Hirschl 68.015



# RISD MUSEUM

Studio of Francesco Solimena  
Italian, 1657-1747

*The Annunciation, Modello for Altarpiece of the Church of San Rocco,*  
ca. 1733

Oil on canvas

Jesse Metcalf Fund 69.044



Louis Antoine Léon Riesener  
French, 1808-1878

*La Bacchante, 1836*

Oil on canvas

Edgar J. Lownes Fund 69.078



Spanish

*Crucifixion, ca. 1490*

Tempera and gold on panel

Gift of John Nicholas Brown 69.197



Antoine Chintreuil

French, 1814-1873

*White Chateau, ca. 1855*

Oil on canvas

Museum Gift Fund 71.079





# RISD MUSEUM

Guillaume Guillon, called Lethière  
French, 1760-1832  
*The Death of Camilla*, 1785  
Oil on canvas  
Mary B. Jackson Fund 72.144



Attributed to Charles Meynier  
French, 1768-1832  
previous attribution Louis Gauffier  
French, 1761-1801  
*Love is the Same for All (Amor Omnibus Idem)*, 1795  
Oil on canvas  
Mary B. Jackson Fund 72.145



Charles François Daubigny  
French, 1817-1878  
*Landscape*, 1871  
Oil on panel  
Mary B. Jackson Fund 73.120



Louis Boullogne the Younger  
French, 1654-1733  
*Augustus Orders the Closing of the Doors of the Temple of Janus*, ca. 1681  
Oil on canvas  
Mary B. Jackson Fund 73.122



# RISD MUSEUM

Attributed to Andrea Casali  
Italian, 1705-1784  
*The Continnence of Scipio*, ca. 1743  
Oil on canvas  
Jesse Metcalf Fund 75.027



Eglon Hendrick van der Neer  
Dutch, 1634-1703  
*Allegory of Death*, 1677  
Oil on panel  
Helen M. Danforth Acquisition Fund 77.047



William Bell Scott  
English, 1811-1890  
*Cockcrow*, 1856  
Oil on canvas  
Helen M. Danforth Acquisition Fund 78.088



Sir William Beechey  
English, 1753-1839  
*Portrait of John Cook of Norwich*, 1784  
Oil on canvas  
Helen M. Danforth Acquisition Fund 79.009



# RISD MUSEUM

Guillaume Beneman, cabinetmaker  
French, b. Germany, d. 1811  
*Drop-Front Secretary (Secrétaire à Abattant)*, ca. 1800-1810  
Mahogany and oak with brass and gilded bronze mounts, embossed  
leather, marble top  
Helen M. Danforth Acquisition Fund 80.106



Leandro Bassano  
Italian, 1557-1622  
*Adoration of the Shepherds*, ca. 1592-1594  
Oil on canvas  
Museum purchase: bequest of Lyra Brown Nickerson, by exchange  
81.093



Willem Drost  
Dutch, ca. 1630–after 1680  
*Portrait of a Young Man*, ca. 1655  
Oil on canvas  
Museum purchase: gift of the Museum Associates 83.113



Francesco Foschi  
Italian, fl. ca. 1750  
*Winter Landscape*, ca. 1750  
oil on canvas  
Mary B. Jackson Fund, Helen M. Danforth Acquisition Fund, Jesse  
Metcalf Fund, Georgianna Sayles Aldrich Fund, Edgar J. Lownes Fund  
and Walter H. Kimball Fund 85.029



# RISD MUSEUM

Thomas Gainsborough  
English, 1727-1788  
*Portrait of a Woman*, ca. 1760  
Oil on canvas  
Gift of Mrs. Murray S. Danforth 85.140



Fritz Karl Hermann von Uhde  
German, 1848-1911  
*The Busy Family*, ca. 1885  
Oil on paper, mounted on panel  
Gift of Jesse Metcalf 94.004



Pompeo Girolamo Batoni  
Italian, 1708-1787  
*Thomas Estcourt, Esq.*, 1772  
Oil on canvas  
Brown University Campus Collection EL012.88

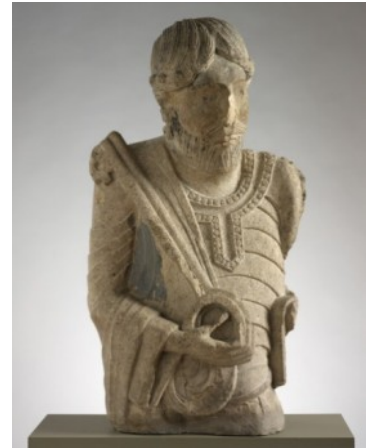


# RISD MUSEUM

Attributed to Simone Pignoni  
Italian, 1611-1698  
*Judith (formerly thought to be Lucretia)*, 17th century  
Oil on canvas  
Private Collection TL149.2016



Burgundian (Migration period); French, Burgundy region  
*Saint Peter*, ca. 1106-1112  
Limestone with traces of gesso and polychromy (colored paint)  
Museum Appropriation Fund 20.254



François Honoré Georges Jacob-Desmalter, cabinetmaker  
French, 1770-1841  
Jacob-Desmalter et Cie, manufacturer  
French, 1803 - 1825  
*Console table*, ca. 1805  
Mahogany and ash and marble with gilded bronze  
Gift of Mrs. Harold Brown 37.144



François Honoré Georges Jacob-Desmalter, cabinetmaker  
French, 1770-1841  
Jacob-Desmalter et Cie, manufacturer  
French, 1803 - 1825  
*Console table*, ca. 1805  
Mahogany and ash and marble with gilded bronze  
Gift of Mrs. Harold Brown 37.145



# RISD MUSEUM

French, Dordogne region

*Apostle*, ca. 1110

Limestone

Museum Appropriation Fund 41.045

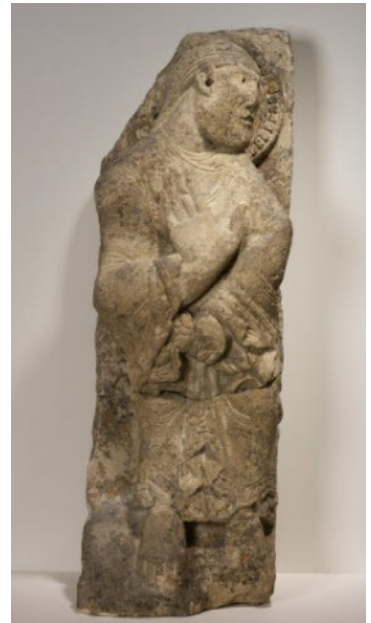


French, (Dordogne region)

*Apostle*, ca. 1110

Limestone

Museum Appropriation Fund 41.046



# RISD MUSEUM

Spanish

*Head of Christ or a Saint*, ca. 1220-1240

Walnut with polychromy (colored paint)

Museum Works of Art Fund 59.131



Spanish

*Christ in Majesty*, ca. 1090-1100

Limestone

Gift of John Nicholas Brown 69.196



Spanish

*Saint George*, 1400s

Wood with polychromy

Gift of John Nicholas Brown 69.198

