

RISD MUSEUM

A Changing Reflection

Silver, Metalwork, and Jewelry in the 19th–21st Centuries, April 21, 2017–October 1, 2019

What a person chooses to have in their home, put on their table, and wear on their body can reflect who they are. Whether functional, ornamental or both, the objects designers create can reflect the style, innovation, and technology of an era. From silver to aluminum, metal is often the medium from which tableware, decorative arts, and jewelry are fashioned.

Beginning in the late 1800s, designers left past styles behind to forge the new. This gallery explores how modern and contemporary metal is designed, formed, and decorated, presenting a distinct reflection of its makers and owners.

CHECKLIST OF THE EXHIBITION

John Prip
American, 1922-2009
manufacturer Reed & Barton
American, 1824-2015
Lark Spoon, 1958
silver
Mary B. Jackson Fund 2001.57.8.3



John Prip
American, 1922-2009
Lark Teaspoon, 1958
silver
Mary B. Jackson Fund 2001.57.8.4

Lebolt & Co. Silver Workshop
American, 1910-1944
Tray, ca. 1910
Silver
Elizabeth T. and Dorothy N. Casey Fund 2015.111.24.5

RISD MUSEUM

Peer Smed
American, b. Denmark, 1887 - 1943
Compote, ca. 1930
Silver
Elizabeth T. and Dorothy N. Casey Fund 2015.111.34



Christopher Dresser, designer
Scottish, 1834-1904
Hukin & Heath, manufacturer
English, 1885-1953
Toast Rack, ca. 1900
Silver
Georgianna Sayles Aldrich Fund 1991.070



Attributed to Christopher Dresser, designer
Scottish, 1834-1904
Old Hall Earthenware Company, manufacturer
English, ca. 1861-1886
Pitcher, ca. 1881
Earthenware with transfer-printed enamel
Edgar J. Lownes Fund 1997.36



Attributed to Christopher Dresser
Scottish, 1834-1904
Atkin Brothers, manufacturer
English, 1853-1925
Egg Set, ca. 1880-1890
Silverplate
Gift of Glenn Gissler, RISD 1984 2004.16.1



RISD MUSEUM

Attributed to Christopher Dresser
Scottish, 1834-1904
Ewer, ca. 1880
brass; fruitwood
Gift of Glenn Gissler, RISD 1984 2004.73.1



Attributed to Christopher Dresser
Scottish, 1834-1904
Toast Rack, ca. 1880
silver plate
Gift of Glenn Gissler, RISD 1984 2004.73.2



Christopher Dresser, designer
Scottish, 1834-1904
Minton Pottery Factory, manufacturer
English, 1793-present
Vase, ca. 1862
Glazed porcelain, gilding
Gift of Glenn Gissler 2008.104.6



RISD MUSEUM

Christopher Dresser, designer
Scottish, 1834-1904
Benham & Froud, manufacturer
1855-1924
Pair of Fire Dogs, 1880-1900
Brass
Gift of Glenn Gissler 2008.104.9.2



Attributed to Christopher Dresser
Scottish, 1834-1904
Jug, ca. 1880
Brass
Gift of Glenn Gissler 2009.106.3



Christopher Dresser, designer
Scottish, 1834-1904
Minton Pottery Factory, manufacturer
English, 1793-present
Cup, ca. 1873
Porcelain with enamels and gilding
Gift of Glenn Gissler 2010.39.3



Christopher Dresser, designer
Scottish, 1834-1904
Minton Pottery Factory, manufacturer
English, 1793-present
Saucer, 1875
Porcelain with enamels and gilding
Gift of Glenn Gissler 2010.39.4



RISD MUSEUM

Christopher Dresser, designer
Scottish, 1834-1904
Minton Pottery Factory, manufacturer
English, 1793-present
Vase, ca. 1875
Porcelain with enamels and gilding
Gift of Glenn Gissler 2013.86.3



Christopher Dresser, designer
Scottish, 1834-1904
Hukin & Heath, manufacturer
English, 1885-1953
Kettle on Stand, ca. 1878
Electroplated silver with ebony
Elizabeth T. and Dorothy N. Casey Fund 2015.41.2



William Arthur Smith Benson
English, 1854-1924
Teapot on Stand, 1914
Silver with fruitwood and cane
Gift of Jane and Phillip Johnston 1999.42

Cellini Craft, Inc.
American, 1933-1957
Salad set, 1941
Silver
Elizabeth T. and Dorothy N. Casey Fund 2015.111.1



RISD MUSEUM

The Kalo Shop, manufacturer
American, 1900-1970
Compote, ca. 1912-1916
Silver
Elizabeth T. and Dorothy N. Casey Fund 2015.111.10



The Kalo Shop, manufacturer
American, 1900-1970
Creamer and sugar set, ca. 1912-1916
Silver
Elizabeth T. and Dorothy N. Casey Fund 2015.111.11



The Kalo Shop, manufacturer
American, 1900-1970
Creamer, ca. 1912-1916
Silver
Elizabeth T. and Dorothy N. Casey Fund 2015.111.11.1



The Kalo Shop, manufacturer
American, 1900-1970
Sugar, ca. 1912-1916
Silver
Elizabeth T. and Dorothy N. Casey Fund 2015.111.11.2



The Kalo Shop, manufacturer
American, 1900-1970
Child's dish, ca. 1912-1916
Silver
Elizabeth T. and Dorothy N. Casey Fund 2015.111.12



RISD MUSEUM

The Kalo Shop, manufacturer
American, 1900-1970
Fork, ca. 1900-1905
Silver and copper
Elizabeth T. and Dorothy N. Casey Fund 2015.111.13



The Kalo Shop, manufacturer
American, 1900-1970
Water pitcher, ca. 1911
Silver
Elizabeth T. and Dorothy N. Casey Fund 2015.111.14



RISD MUSEUM

The Kalo Shop, manufacturer
American, 1900-1970
Salad set, ca. 1928
Silver
Elizabeth T. and Dorothy N. Casey Fund 2015.111.15



The Kalo Shop, manufacturer
American, 1900-1970
Salad set, ca. 1910-1920
Silver and copper
Elizabeth T. and Dorothy N. Casey Fund 2015.111.16ab



The Kalo Shop, manufacturer
American, 1900-1970
Sauce or mayonnaise set, ca. 1940-1950
Silver
Elizabeth T. and Dorothy N. Casey Fund 2015.111.17



The Kalo Shop, manufacturer
American, 1900-1970
Tea strainer, ca. 1920
Silver
Elizabeth T. and Dorothy N. Casey Fund 2015.111.18



RISD MUSEUM

The Kalo Shop, manufacturer
American, 1900-1970
Syrup pitcher and saucer, ca. 1912-1916
Silver
Elizabeth T. and Dorothy N. Casey Fund 2015.111.19



Gustafson Craft
American, 1945 - 1964
Server, ca. 1940
Silver
Elizabeth T. and Dorothy N. Casey Fund 2015.111.2



The Kalo Shop, manufacturer
American, 1900-1970
Tray, ca. 1912-1916
Silver
Elizabeth T. and Dorothy N. Casey Fund 2015.111.20



RISD MUSEUM

The Kalo Shop, manufacturer
American, 1900-1970
Vase, ca. 1912-1916
Silver
Elizabeth T. and Dorothy N. Casey Fund 2015.111.21



The Kalo Shop, manufacturer
American, 1900-1970
Vase, ca. 1912-1916
Silver
Elizabeth T. and Dorothy N. Casey Fund 2015.111.22



The Kalo Shop, manufacturer
American, 1900-1970
Vase, ca. 1912-1916
Silver
Elizabeth T. and Dorothy N. Casey Fund 2015.111.23



Lebolt & Co. Silver Workshop
American, 1910-1944
Coffee and tea set, ca. 1910
Silver
Elizabeth T. and Dorothy N. Casey Fund 2015.111.24



Lebolt & Co. Silver Workshop
American, 1910-1944
Coffee pot, ca. 1910
Silver
Elizabeth T. and Dorothy N. Casey Fund 2015.111.24.1



RISD MUSEUM

Lebolt & Co. Silver Workshop
American, 1910-1944
Teapot, ca. 1910
Silver
Elizabeth T. and Dorothy N. Casey Fund 2015.111.24.2



Lebolt & Co. Silver Workshop
American, 1910-1944
Creamer, ca. 1910
Silver
Elizabeth T. and Dorothy N. Casey Fund 2015.111.24.3



Lebolt & Co. Silver Workshop
American, 1910-1944
Sugar, ca. 1910
Silver
Elizabeth T. and Dorothy N. Casey Fund 2015.111.24.4



Lebolt & Co. Silver Workshop
American, 1910-1944
Water pitcher, ca. 1910-1920
Silver
Elizabeth T. and Dorothy N. Casey Fund 2015.111.25



Lebolt & Co. Silver Workshop
American, 1910-1944
Server, ca. 1910-1920
Silver
Elizabeth T. and Dorothy N. Casey Fund 2015.111.26



RISD MUSEUM

Lebolt & Co. Silver Workshop
American, 1910-1944
Bonbon Spoon, ca. 1910-1920
Silver
Elizabeth T. and Dorothy N. Casey Fund 2015.111.27



Marshall Field and Company Crafts Shop
American, 1907-1917
Pair of candlesticks, ca. 1910-1930
Brass
Elizabeth T. and Dorothy N. Casey Fund 2015.111.28



Marshall Field and Company Crafts Shop
American, 1907-1917
candlestick, ca. 1910-1930
Brass
Elizabeth T. and Dorothy N. Casey Fund 2015.111.28.1



RISD MUSEUM

Marshall Field and Company Crafts Shop
American, 1907-1917
candlestick, ca. 1910-1930
Brass
Elizabeth T. and Dorothy N. Casey Fund 2015.111.28.2



Falick Novick
Russian, 1878-1958
Bowl, ca. 1910
Copper
Elizabeth T. and Dorothy N. Casey Fund 2015.111.29



The Kalo Shop, manufacturer
American, 1900-1970
Tea strainer, ca. 1920
Silver
Elizabeth T. and Dorothy N. Casey Fund 2015.111.3



RISD MUSEUM

Falick Novick
Russian, 1878-1958
Salad set, ca. 1920
Silver
Elizabeth T. and Dorothy N. Casey Fund 2015.111.30



Potter-Mellen
American, 1933-
Horace Potter
American, 1873 - 1948
Louis Mellen
American
Spoon, ca. 1940
Silver
Elizabeth T. and Dorothy N. Casey Fund 2015.111.31



RISD MUSEUM

Potter Studio
American, 1909-1928
Horace Potter
American, 1873 - 1948
Server, ca. 1920
Silver
Elizabeth T. and Dorothy N. Casey Fund 2015.111.32



The Randahl Shop
American, 1911-1965
Water pitcher, ca. 1912
Silver
Elizabeth T. and Dorothy N. Casey Fund 2015.111.33



RISD MUSEUM

Arthur J. Stone, designer
American, b. England, 1847-1938
Alfred Wikstrom, associated artist/maker
American, active 1912 - 1914
Server, ca. 1912-1914
Silver
Elizabeth T. and Dorothy N. Casey Fund 2015.111.35



The TC Shop
American, 1910-1931
Salad set, ca. 1920
Silver
Elizabeth T. and Dorothy N. Casey Fund 2015.111.36



RISD MUSEUM

The TC Shop
American, 1910-1931
Tray, ca. 1920
Silver
Elizabeth T. and Dorothy N. Casey Fund 2015.111.37



Tiffany & Company
American, 1837-
Bowl, ca. 1930
Silver with enamel
Elizabeth T. and Dorothy N. Casey Fund 2015.111.38



The Volund Shop
American, 1914-1915
Grant Wood, silversmith
American, 1891-1942
Kristopher Haga, silversmith
American, b. Norway, 1887 - 1932
Server, 1914 - 1915
Silver
Elizabeth T. and Dorothy N. Casey Fund 2015.111.39



RISD MUSEUM

The Kalo Shop, manufacturer
American, 1900-1970
Bowl, 1923
Silver
Elizabeth T. and Dorothy N. Casey Fund 2015.111.4



The Kalo Shop, manufacturer
American, 1900-1970
Bowl, ca. 1920
Silver
Elizabeth T. and Dorothy N. Casey Fund 2015.111.5



The Kalo Shop, manufacturer
American, 1900-1970
Bowl, ca. 1930
Silver
Elizabeth T. and Dorothy N. Casey Fund 2015.111.6



The Kalo Shop, manufacturer
American, 1900-1970
Pair of candlesticks, ca. 1920
Silver
Elizabeth T. and Dorothy N. Casey Fund 2015.111.7



RISD MUSEUM

The Kalo Shop, manufacturer
American, 1900-1970
candlestick, ca. 1920
Silver
Elizabeth T. and Dorothy N. Casey Fund 2015.111.7.1



The Kalo Shop, manufacturer
American, 1900-1970
candlestick, ca. 1920
Silver
Elizabeth T. and Dorothy N. Casey Fund 2015.111.7.2



The Kalo Shop, manufacturer
American, 1900-1970
Child's set (porringer and underplate), ca. 1920
Silver
Elizabeth T. and Dorothy N. Casey Fund 2015.111.8



RISD MUSEUM

The Kalo Shop, manufacturer
American, 1900-1970
Compote, 1929
Silver
Elizabeth T. and Dorothy N. Casey Fund 2015.111.9



The Kalo Shop, manufacturer
American, 1900-1970
Coffee Service, ca. 1912-1916
Silver
Gift of Paul Somerson 2015.116



The Kalo Shop, manufacturer
American, 1900-1970
Coffee pot, ca. 1912-1916
Silver
Gift of Paul Somerson 2015.116.1



The Kalo Shop, manufacturer
American, 1900-1970
Sugar, ca. 1912-1916
Silver
Gift of Paul Somerson 2015.116.2



The Kalo Shop, manufacturer
American, 1900-1970
Creamer, ca. 1912-1916
Silver
Gift of Paul Somerson 2015.116.3

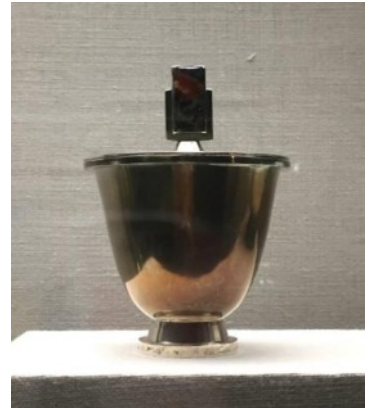


RISD MUSEUM

The Kalo Shop, manufacturer
American, 1900-1970
Tray, ca. 1912-1916
Silver
Gift of Paul Somerson 2015.116.4



William Edgar Brigham
American, 1885-1962
Pyx, ca. 1930-1940
Silver with moss agate
Gift of the Estate of William E. Brigham 63.011.105



William Edgar Brigham
American, 1885-1962
Box, ca. 1930-1940
Silver with lapis lazuli and mahogany
Gift of the Estate of William E. Brigham 63.011.52



William Edgar Brigham
American, 1885-1962
Footed Bowl, ca. 1920-1930
Silver
Gift of the Estate of William E. Brigham 63.011.79



William Edgar Brigham
American, 1885-1962
Ladle, ca. 1930-1940
Silver with onyx
Gift of the Estate of William E. Brigham 63.011.80



RISD MUSEUM

William Edgar Brigham
American, 1885-1962
Cigarette Box, ca. 1930
Silver, lapis lazuli, and malachite
Gift of the Estate of William E. Brigham 63.011.82



William Edgar Brigham
American, 1885-1962
Footed Bowl, ca. 1930-1940
Silver, onyx and tourmaline
Gift of the Estate of William E. Brigham 63.011.84



Waldemar Raemisch
German, 1888-1955
Coffee Service, ca. 1920
Silver with ivory
Georgianna Sayles Aldrich Fund 1993.039

Waldemar Raemisch
German, 1888-1955
Coffeepot, ca. 1920
Silver; ivory
Georgianna Sayles Aldrich Fund 1993.039.1



RISD MUSEUM

Waldemar Raemisch
German, 1888-1955
Teapot, ca. 1920
silver; ivory
Georgianna Sayles Aldrich Fund 1993.039.2



Waldemar Raemisch
German, 1888-1955
Creamer, ca. 1920
Silver; ivory
Georgianna Sayles Aldrich Fund 1993.039.3



Waldemar Raemisch
German, 1888-1955
Sugar bowl, ca. 1920
Silver; ivory
Georgianna Sayles Aldrich Fund 1993.039.4



Arthur J. Stone, designer
American, b. England, 1847-1938
Arthur L. Hartwell, silversmith
American, 1882 - 1956
Edgar L. Caron, silversmith
American, 1924 - 1937
Stone Associates, studio
American, 1937 - 1957
tea and coffee service, ca. 1937
silver; wood
Gift of Mrs. Edward Sherman 2000.50



Josef Hoffmann, designer
Austrian, b. Czech Republic, 1870-1956
Rundes Modell Flatware Set, 1906
Alpaca Silver
Gift of Glenn Gissler 2013.103.6



RISD MUSEUM

Josef Hoffmann, designer
Austrian, b. Czech Republic, 1870-1956
Wiener Werkstätte, manufacturer
Austrian, 1903-1932
Rundes Modell Fork, 1906
Alpaca Silver
Gift of Glenn Gissler 2013.103.6.1



Josef Hoffmann, designer
Austrian, b. Czech Republic, 1870-1956
Rundes Modell Dessert Fork, 1906
Alpaca Silver
Gift of Glenn Gissler 2013.103.6.2



RISD MUSEUM

Josef Hoffmann, designer
Austrian, b. Czech Republic, 1870-1956
Rundes Modell Tablespoon, 1906
Alpaca Silver
Gift of Glenn Gissler 2013.103.6.3



Josef Hoffmann, designer
Austrian, b. Czech Republic, 1870-1956
Rundes Modell Dessert Spoon, 1906
Alpaca Silver
Gift of Glenn Gissler 2013.103.6.4



RISD MUSEUM

Josef Hoffmann, designer
Austrian, b. Czech Republic, 1870-1956
Rundes Modell Knife, 1906
Alpaca Silver
Gift of Glenn Gissler 2013.103.6.5



Josef Hoffmann, designer
Austrian, b. Czech Republic, 1870-1956
Rundes Modell Dessert Knife, 1906
Alpaca Silver
Gift of Glenn Gissler 2013.103.6.6



RISD MUSEUM

Reed & Barton, manufacturer
American, 1824-2015
Eliel Saarinen, designer
American, b. Finland, 1873 - 1950
Candide Flatware Set, 1927
Silver plated steel
Elizabeth T. and Dorothy N. Casey Fund 2015.110.8



Reed & Barton, manufacturer
American, 1824-2015
Eliel Saarinen, designer
American, b. Finland, 1873 - 1950
Candide Salad Fork, 1927
Silver plated steel
Elizabeth T. and Dorothy N. Casey Fund 2015.110.8.1



RISD MUSEUM

Reed & Barton, manufacturer
American, 1824-2015
Eliel Saarinen, designer
American, b. Finland, 1873 - 1950
Candide Dinner Fork, 1927
Silver plated steel
Elizabeth T. and Dorothy N. Casey Fund 2015.110.8.2



RISD MUSEUM

Reed & Barton, manufacturer
American, 1824-2015
Eliel Saarinen, designer
American, b. Finland, 1873 - 1950
Candide Tablespoon, 1927
Silver plated steel
Elizabeth T. and Dorothy N. Casey Fund 2015.110.8.3



Reed & Barton, manufacturer
American, 1824-2015
Eliel Saarinen, designer
American, b. Finland, 1873 - 1950
Candide Teaspoon, 1927
Silver plated steel
Elizabeth T. and Dorothy N. Casey Fund 2015.110.8.4



RISD MUSEUM

Reed & Barton, manufacturer
American, 1824-2015
Eliel Saarinen, designer
American, b. Finland, 1873 - 1950
Candide Knife, 1927
Silver plated steel
Elizabeth T. and Dorothy N. Casey Fund 2015.110.8.5



The Randahl Shop
American, 1911-1965
Coffee Service, ca. 1935
Silver with ebony
Gift of Rebecca W. S. More 2016.18.1



The Randahl Shop
American, 1911-1965
Coffeepot, ca. 1935
Sterling silver with ebony
Gift of Rebecca W. S. More 2016.18.1.1



RISD MUSEUM

The Randahl Shop
American, 1911-1965
Sugar, ca. 1935
Sterling silver
Gift of Rebecca W. S. More 2016.18.1.2



The Randahl Shop
American, 1911-1965
Creamer, ca. 1935
Sterling silver
Gift of Rebecca W. S. More 2016.18.1.3



Paul T. Frankl, designer
Austrian, 1886-1958
Warren Telechron Co., manufacturer
American, 1912-ca. 1940
Modernique Clock (model 431), 1928-1932
enamelled metal; glass; Bakelite (TM)
Gift of Christopher P. Monkhouse 1986.209.3



RISD MUSEUM

Russel Wright
American, 1904-1976
Bun Warmer, ca. 1935
Aluminum; rattan
Gift of Christopher Monkhouse 1989.082



Purse, ca. 1950
brass (alloy); silk
Gift of Sybil Kern 1990.112.31



Paco Rabanne, designer, design label
Spanish, b. 1934
Purse, ca. 1965
chromium; linked disks
Gift of the Estate of Eleanor Fayerweather 1993.085.088



Peter Müller-Munk, designer
American, 1904-67
Revere Copper & Brass Company, manufacturer
American, founded 1801
Normandie Pitcher, 1935-1941
Chrome-plated brass
Gift of Alice K. Miles 1994.082



RISD MUSEUM

Waldemar Raemisch, designer
German, 1888-1955
Vase, ca. 1940
Nickel silver, plated gold
Elizabeth T. and Dorothy N. Casey Fund 1997.62



Erik Magnussen
Danish, 1884-1961
Coffee Service, ca. 1930
Silver with ivory
Gift of Virginia Outwin Boochever 2000.67



Erik Magnussen
Danish, 1884-1961
Coffee, ca. 1930
Silver with ivory
Gift of Virginia Outwin Boochever 2000.67.1



Erik Magnussen
Danish, 1884-1961
Creamer, ca. 1930
Silver
Gift of Virginia Outwin Boochever 2000.67.2



RISD MUSEUM

Erik Magnussen
Danish, 1884-1961
Covered Sugar Bowl, ca. 1930
Silver
Gift of Virginia Outwin Boochever 2000.67.3



Erik Magnussen
Danish, 1884-1961
Tray, ca. 1930
Silver
Gift of Virginia Outwin Boochever 2000.67.4



Erik Magnussen
Danish, 1884-1961
Pitcher, ca. 1935
Silver
Gift of Virginia Outwin Boochever 2001.12



Marcus & Company
American, 1892 - 1962
Tazza, ca. 1920
Sterling silver
Museum purchase; bequest of Eliza Taft by exchange 2005.71.3



Wilhelm Wagenfeld, designer
German, 1900-1990
WMF (Württembergische Metallwarenfabrik), manufacturer
German, 1853-present
Salt and Pepper Shakers with Tray, Max and Moritz 1952
Glass, stainless steel
Gift of Glenn Gissler 2011.110.8



RISD MUSEUM

Gio Ponti, designer
Italian, 1891 - 1979
Arthur Krupp, Italy, producer
Italian
Flatware Set, 1951
Stainless Steel
Gift of Glenn Gissler 2013.103.5



Gio Ponti, designer
Italian, 1891 - 1979
Fork, 1951
Stainless Steel
Gift of Glenn Gissler 2013.103.5.1



RISD MUSEUM

Gio Ponti, designer
Italian, 1891 - 1979
Dessert fork, 1951
Stainless Steel
Gift of Glenn Gissler 2013.103.5.2



Gio Ponti, designer
Italian, 1891 - 1979
Tablespoon, 1951
Stainless Steel
Gift of Glenn Gissler 2013.103.5.3



RISD MUSEUM

Gio Ponti, designer
Italian, 1891 - 1979
Teaspoon, 1951
Stainless Steel
Gift of Glenn Gissler 2013.103.5.4



Gio Ponti, designer
Italian, 1891 - 1979
Knife, 1951
Stainless Steel
Gift of Glenn Gissler 2013.103.5.5



Just Andersen, designer
Danish, b. Greenland, 1884-1943
Vase, ca. 1930
Bronze
Gift of Glenn Gissler 2014.60.5



RISD MUSEUM

Just Andersen, designer
Danish, b. Greenland, 1884-1943
Vase, ca. 1930
Bronze
Gift of Glenn Gissler 2014.60.6



Karl Gustav Hansen, designer
Danish, 1914-2002
Hans Hansen Silver, manufacturer
Denmark
Coffeepot, 1948
Silver with ebony
Gift of Dennis W. Ury, Jr. '65 in memory of Dennis W. Ury III
2016.101.1ab



Karl Gustav Hansen, designer
Danish, 1914-2002
Hans Hansen Silver, manufacturer
Denmark
Creamer, 1948
Silver
Gift of Dennis W. Ury, Jr. '65 in memory of Dennis W. Ury III
2016.101.2



Karl Gustav Hansen, designer
Danish, 1914-2002
Hans Hansen Silver, manufacturer
Denmark
Sugar Bowl, 1948
Silver
Gift of Dennis W. Ury, Jr. '65 in memory of Dennis W. Ury III
2016.101.3ab



RISD MUSEUM

Claudius Linossier
French, 1893-1953
Plate, 1951
Silver with metallic oxides
Museum Works of Art Fund 53.058



Lurelle Guild, designer
American, 1898-1985
Chase Brass and Copper Company, manufacturer
American, 1837 -
Canapé Plate, 1933
Chrome-plated copper
Gift of Christopher P. Monkhouse in honor of Rodolfo Machado,
former Head, Department of Architecture, Rhode Island School of
Design 80.126



John Prip
American, 1922-2009
Teapot, ca. 1952
Silver with ivory and cane
Museum purchase: gift of Mr. and Mrs. Gilman Angier 1987.085.1



RISD MUSEUM

John Prip
American, 1922-2009
Tea Strainer, ca. 1950-1952
Silver with ebony
Museum purchase: gift of Mr. and Mrs. Gilman Angier 1987.085.2



John Prip
American, 1922-2009
Overlap spoon, 1985
Copper
Museum purchase: gift of Mr. and Mrs. Gilman Angier 1987.085.3



John Prip, designer
American, 1922-2009
Reed & Barton, manufacturer
American, 1824-2015
Lark Ladle, 1960
silver
Gift of Christopher Monkhouse 1992.108



RISD MUSEUM

John Prip, designer
American, 1922-2009
Reed & Barton, manufacturer
American, 1824-2015
Dimension tea and coffee service, 1960
Silverplate with vinyl-wrapped handles
Elizabeth T. and Dorothy N. Casey Fund 1999.15



John Prip
American, 1922-2009
Coffeepot, 1954
Silver with ivory finial and cane wrapped handle
Mary B. Jackson Fund 2001.57.1



John Prip
American, 1922-2009
manufacturer Reed & Barton
American, 1824-2015
Tapestry flatware, ca. 1960
Silver with stainless steel
Mary B. Jackson Fund 2001.57.10



RISD MUSEUM

John Prip
American, 1922-2009
manufacturer Reed & Barton
American, 1824-2015
Tapestry Knife, ca. 1960
Silver and stainless steel
Mary B. Jackson Fund 2001.57.10.1



John Prip
American, 1922-2009
manufacturer Reed & Barton
American, 1824-2015
Tapestry Fork, ca. 1960
Silver
Mary B. Jackson Fund 2001.57.10.2



John Prip
American, 1922-2009
manufacturer Reed & Barton
American, 1824-2015
Tapestry Spoon, ca. 1960
Silver
Mary B. Jackson Fund 2001.57.10.3



RISD MUSEUM

John Prip, designer
American, 1922-2009
Overlap Spoon, ca. 1985
silver
Mary B. Jackson Fund 2001.57.11.1



John Prip
American, 1922-2009
Overlap Spoon, ca. 1985
paper
Mary B. Jackson Fund 2001.57.11.2



John Prip, designer
American, 1922-2009
Model for Overlap Spoon, ca. 1985
copper
Mary B. Jackson Fund 2001.57.11.3



RISD MUSEUM

John Prip
American, 1922-2009
Spoon,
silver
Mary B. Jackson Fund 2001.57.12.1



RISD MUSEUM

John Prip
American, 1922-2009
Spoon (sketch),
paper
Mary B. Jackson Fund 2001.57.12.2



John Prip
American, 1922-2009
Overlap Spoon Model, ca. 1985
Copper
Mary B. Jackson Fund 2001.57.13.1



John Prip
American, 1922-2009
Spoon (sketch), ca. 1985
paper
Mary B. Jackson Fund 2001.57.13.2



RISD MUSEUM

John Prip
American, 1922-2009
Spoon Model, ca. 1985
copper
Mary B. Jackson Fund 2001.57.14.1



John Prip
American, 1922-2009
Spoon Model, ca. 1985
Paper with paint
Mary B. Jackson Fund 2001.57.14.2



RISD MUSEUM

John Prip
American, 1922-2009
Tea Strainer, 1952
Silver with ebony
Mary B. Jackson Fund 2001.57.2



John Prip
American, 1922-2009
Spoon/Fork (model), ca. 1980-1990
paper
Mary B. Jackson Fund 2001.57.26



John Prip
American, 1922-2009
Letter opener, ca. 1950
Silver with ebony
Mary B. Jackson Fund 2001.57.3



RISD MUSEUM

John Prip
American, 1922-2009
Fork Model, ca. 1985-1990
Paper with graphite
Mary B. Jackson Fund 2001.57.31



John Prip
American, 1922-2009
Letter opener (model), ca. 1985-1990
paper; pencil
Mary B. Jackson Fund 2001.57.37



RISD MUSEUM

John Prip
American, 1922-2009
Letter opener (model), ca. 1986-1987
cardboard; paint
Mary B. Jackson Fund 2001.57.45



RISD MUSEUM

John Prip
American, 1922-2009
Spoon,
copper
Mary B. Jackson Fund 2001.57.46



RISD MUSEUM

John Prip
American, 1922-2009
Curved Fork, ca. 1955
pewter
Mary B. Jackson Fund 2001.57.47.1



John Prip
American, 1922-2009
Knife, ca. 1955
pewter
Mary B. Jackson Fund 2001.57.47.2

John Prip
American, 1922-2009
Fork, ca. 1955
pewter
Mary B. Jackson Fund 2001.57.47.3

John Prip
American, 1922-2009
Overlap Model, ca. 1985
Brass and copper
Mary B. Jackson Fund 2001.57.48.1



RISD MUSEUM

John Prip
American, 1922-2009
Overlap Model, ca. 1985
Brass and copper
Mary B. Jackson Fund 2001.57.48.2



John Prip
American, 1922-2009
Pendant, ca. 1950
Silver, gold, ivory, and amethyst
Mary B. Jackson Fund 2001.57.51



John Prip
American, 1922-2009
Pin,
silver
Mary B. Jackson Fund 2001.57.52



John Prip
American, 1922-2009
Pin,
silver
Mary B. Jackson Fund 2001.57.53



RISD MUSEUM

John Prip
American, 1922-2009
Ring, 1977
silver; gold
Mary B. Jackson Fund 2001.57.54



John Prip
American, 1922-2009
Pull, ca. 1960
pewter
Mary B. Jackson Fund 2001.57.55.1



John Prip
American, 1922-2009
Pull, ca. 1960
pewter
Mary B. Jackson Fund 2001.57.55.2



John Prip
American, 1922-2009
Pull, ca. 1960
pewter
Mary B. Jackson Fund 2001.57.55.3



RISD MUSEUM

John Prip
American, 1922-2009
Dimension flatware, 1960
Silver
Mary B. Jackson Fund 2001.57.7



John Prip
American, 1922-2009
Dimension Knife, 1960
silver; stainless steel
Mary B. Jackson Fund 2001.57.7.1



John Prip
American, 1922-2009
manufacturer Reed & Barton
American, 1824-2015
Dimension Fork, 1960
silver
Mary B. Jackson Fund 2001.57.7.2



RISD MUSEUM

John Prip
American, 1922-2009
Dimension Spoon, 1960
Silver
Mary B. Jackson Fund 2001.57.7.3



John Prip
American, 1922-2009
Lark flatware, 1958
silver
Mary B. Jackson Fund 2001.57.8



John Prip
American, 1922-2009
manufacturer Reed & Barton
American, 1824-2015
Lark Knife, 1958
silver; stainless steel
Mary B. Jackson Fund 2001.57.8.1



RISD MUSEUM

John Prip
American, 1922-2009
manufacturer Reed & Barton
American, 1824-2015
Lark Fork, 1958
silver
Mary B. Jackson Fund 2001.57.8.2



John Prip
American, 1922-2009
Lark Ladle Sample, ca. 1948-1952
silver
Mary B. Jackson Fund 2001.57.9.1



John Prip
American, 1922-2009
Small Spoon, ca. 1948-1952
silver
Mary B. Jackson Fund 2001.57.9.8



John Prip
American, 1922-2009
Bird Pitcher, 1951
Silver with ebony
Museum Acquisition Fund 2001.58



RISD MUSEUM

John Prip, designer
American, 1922-2009
Reed & Barton, manufacturer
American, 1824-2015
The Hall China Company, manufacturer
American, 1903 -
Connoisseur Casserole, ca. 1963
Silverplate and earthenware
Gift of Reed & Barton 2003.109.1



John Prip, designer
American, 1922-2009
Reed & Barton, manufacturer
American, 1824-2015
The Hall China Company, manufacturer
American, 1903 -
Connoisseur Casserole, ca. 1963
Silverplate and earthenware
Gift of Reed & Barton 2003.109.2



John Prip
American, 1922-2009
Covered Pitcher, 1949
Silver with ivory and rattan
Mary B. Jackson Fund 2003.6.2

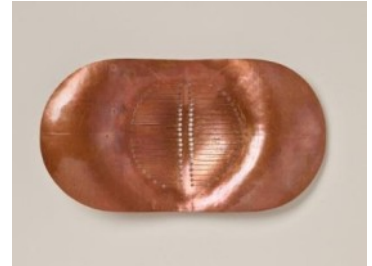


John Prip
American, 1922-2009
Pitcher, 1949
silver; rattan
Mary B. Jackson Fund 2003.6.2A

RISD MUSEUM

John Prip
American, 1922-2009
Cover, 1949
silver; ivory
Mary B. Jackson Fund 2003.6.2B

John Prip
American, 1922-2009
Tea Strainer Model, ca. 1975-1980
Copper
Gift of Peter and Janet Prip 2016.69.1



John Prip
American, 1922-2009
Tea Strainer Model, ca. 1975-1980
Copper
Gift of Peter and Janet Prip 2016.69.2



John Prip
American, 1922-2009
Tea Strainer Model, ca. 1975-1980
Copper
Gift of Peter and Janet Prip 2016.69.3



John Prip
American, 1922-2009
Tea Strainer Model, ca. 1950
Brass with silver
Gift of Peter and Janet Prip 2016.69.4



RISD MUSEUM

Hyewon Lee
Korean, b. 1958
Teapot, 1989
Silver with walnut
Gift of the Artists' Development Fund of the Rhode Island Foundation
1990.001ab



Zelig Segal
Israeli, 1933 - 2015
Cherub Candlesticks, ca. 1990
Sterling silver
Gift of Bertha Urdang Gallery 1990.124.1



Zelig Segal
Israeli, 1933 - 2015
Wine Goblet, ca. 1990
Sterling silver
Gift of Bertha Urdang Gallery 1990.124.2



Zelig Segal, designer
Israeli, 1933 - 2015
Charity Box, ca. 1990
Sterling silver
Gift of Bertha Urdang Gallery 1990.124.3



RISD MUSEUM

Marvin Jensen
American, b. 1945
Mokume Vessel, 1989
Copper

Museum purchase with funds from the National Endowment for the Arts and the Museum Associates 1990.127



Pat Flynn
American, b. 1954
Beaker, 1990
Pewter, silver, gold wash

Museum purchase with funds from the National Endowment for the Arts and the Museum Associates 1991.033



June Schwarcz
American, 1918 - 2015
Vessel, 1986
Electroplated copper foil with enamel
Gift of Mr. and Mrs. Barnet Fain 1993.126



Zaha Hadid, designer
British, b. Iraq, 1950-2016
Sawaya & Moroni, manufacturer
Italian, 1984-
Tea and Coffee Service, 1997
Silver
Elizabeth T. and Dorothy N. Casey Fund 2009.8



RISD MUSEUM

Zaha Hadid, designer
British, b. Iraq, 1950-2016
Sawaya & Moroni, manufacturer
Italian, 1984-
Teapot, 1997
Silver
Elizabeth T. and Dorothy N. Casey Fund 2009.8.1



Zaha Hadid, designer
British, b. Iraq, 1950-2016
Sawaya & Moroni, manufacturer
Italian, 1984-
Coffeepot, 1997
silver
Elizabeth T. and Dorothy N. Casey Fund 2009.8.2



Zaha Hadid, designer
British, b. Iraq, 1950-2016
Sawaya & Moroni, manufacturer
Italian, 1984-
Creamer, 1997
silver
Elizabeth T. and Dorothy N. Casey Fund 2009.8.3



RISD MUSEUM

Zaha Hadid, designer
British, b. Iraq, 1950-2016
Sawaya & Moroni, manufacturer
Italian, 1984-
Sugar Bowl, 1997
silver
Elizabeth T. and Dorothy N. Casey Fund 2009.8.4



Aldo Rossi, designer
Italian, 1931 - 1997
Alessi, manufacturer
Italian, 1921 -
Il conico teakettle, 1986
Stainless steel
Gift of Glenn Gissler 2010.39.1



Aldo Rossi, designer
Italian, 1931 - 1997
Alessi, manufacturer
Italian, 1921 -
Cream and sugar set, 1988-1989
stainless steel
Gift of Glenn Gissler 2010.39.2

Aldo Rossi, designer
Italian, 1931 - 1997
Alessi, manufacturer
Italian, 1921 -
Creamer, 1988-1989
stainless steel
Gift of Glenn Gissler 2010.39.2.1



RISD MUSEUM

Aldo Rossi, designer
Italian, 1931 - 1997
Alessi, manufacturer
Italian, 1921 -
Sugar Bowl and Spoon, 1988-1989
stainless steel
Gift of Glenn Gissler 2010.39.2.2ab



Philippe Starck, designer
French, b. 1949
Alessi, manufacturer
Italian, 1921 -
Juicy Salif, 1988
Cast aluminum
Gift of Glenn Gissler in honor of James Brayton Hall, RISD MLA 1994,
Museum Assistant Director 2006-2009 2010.73.1



Matteo Thun, designer
Italian, b. 1952
WMF (Württembergische Metallwarenfabrik), manufacturer
German, 1853-present
Espresso pot, King Series 1989
Stainless steel with rubber and plastic
Gift of Glenn Gissler in honor of James Brayton Hall, RISD MLA 1994,
Museum Assistant Director 2006-2009 2010.73.2



RISD MUSEUM

Ted Muehling, designer
American, b. 1953
E.R. Butler & Co., manufacturer
American, 1990-
Vase, 2002
Bronze
Gift of Glenn Gissler 2014.60.16



Ted Muehling, designer
American, b. 1953
E.R. Butler & Co., manufacturer
American, 1990-
Candlestick (model 0251), 2002
Bronze
Gift of Glenn Gissler 2014.60.2



Ted Muehling, designer
American, b. 1953
E.R. Butler & Co., manufacturer
American, 1990-
Candlestick (model 0210), 2002
Bronze
Gift of Glenn Gissler 2014.60.3



RISD MUSEUM

Richard Fishman
American, b. 1941
Kiddush Cup, 2006
Silver with gilding
Museum purchase: gift of Joseph A. Chazan, MD 2016.17



Sara Balbach-Lane, designer
American, b. 1938
Gorham Manufacturing Company, manufacturer
American, 1831-
Brown and Bigelow, retailer
American, 1896 -
*Embassy Coffee Service, Embassy*1963
Silver plate with wood and plastic
Gift of the designer 2016.67.1

Gorham Manufacturing Company, manufacturer
American, 1831-
Sara Balbach-Lane, designer
American, b. 1938
Brown and Bigelow, retailer
American, 1896 -
*Embassy Coffeepot, Embassy*1963
Silver plate with wood
Gift of the designer 2016.67.1.1ab



RISD MUSEUM

Gorham Manufacturing Company, manufacturer
American, 1831-
Sara Balbach-Lane, designer
American, b. 1938
Brown and Bigelow, retailer
American, 1896 -
*Embassy Creamer, Embassy*1963
Silver plate with wood
Gift of the designer 2016.67.1.2



Gorham Manufacturing Company, manufacturer
American, 1831-
Sara Balbach-Lane, designer
American, b. 1938
Brown and Bigelow, retailer
American, 1896 -
*Embassy Sugar Bowl, Embassy*1963
Silver plate with wood
Gift of the designer 2016.67.1.3ab



Kay Whitcomb
American, 1921 - 2015
Plate, 1988
Enamel, copper
Promised Gift of Deborah Krupenia and Witchulada Dina Keith, family
of the artist TL104.2016.10



Kay Whitcomb
American, 1921 - 2015
Plate, 1973
Enamel, copper
Promised Gift of Deborah Krupenia and Witchulada Dina Keith, family
of the artist TL104.2016.7



RISD MUSEUM

Nord Bowlen, designer
American, 1909-2001
Lunt Silversmiths, manufacturer
American, 1902 - 2010
"Contrast Flatware" Dinner Fork, 1956
Sterling silver, stainless steel knife blades, injection-molded nylon
handles
Mary B. Jackson Fund 2008.50.1.10

Nord Bowlen, designer
American, 1909-2001
Lunt Silversmiths, manufacturer
American, 1902 - 2010
"Contrast Flatware" Luncheon Fork, 1956
Sterling silver, stainless steel knife blades, injection-molded nylon
handles
Mary B. Jackson Fund 2008.50.2.1

Nord Bowlen, designer
American, 1909-2001
Lunt Silversmiths, manufacturer
American, 1902 - 2010
"Contrast Flatware" Dinner Knife, 1956
Sterling silver, stainless steel knife blades, injection-molded nylon
handles
Mary B. Jackson Fund 2008.50.3.10

Nord Bowlen, designer
American, 1909-2001
Lunt Silversmiths, manufacturer
American, 1902 - 2010
"Contrast Flatware" Butter Knife, 1956
Sterling silver, stainless steel knife blades, injection-molded nylon
handles
Mary B. Jackson Fund 2008.50.4.1

RISD MUSEUM

Nord Bowlen, designer
American, 1909-2001
Lunt Silversmiths, manufacturer
American, 1902 - 2010
"Contrast Flatware" Spoon, 1956
Sterling silver, stainless steel knife blades, injection-molded nylon handles
Mary B. Jackson Fund 2008.50.5.7

Raymond Fernand Loewy, designer
American, 1893-1986
Air France Concorde three-piece flatware set, ca. 1975
plastic; stainless steel
Gift of Glenn Gissler 2009.80.1



Raymond Fernand Loewy, designer
American, 1893-1986
Compagnie d'Esthétique Industrielle, manufacturer
French, 1952 - 1982
Air France Concorde three-piece flatware set, ca. 1975
plastic; stainless steel
Gift of Glenn Gissler 2009.80.1.1

Raymond Fernand Loewy, designer
American, 1893-1986
Air France Concorde three-piece flatware set, ca. 1975
plastic; stainless steel
Gift of Glenn Gissler 2009.80.1.2

Raymond Fernand Loewy, designer
American, 1893-1986
Air France Concorde Flatware Set, ca. 1975
plastic; stainless steel
Gift of Glenn Gissler 2009.80.1.3

RISD MUSEUM

Zaha Hadid, designer
British, b. Iraq, 1950-2016
WMF (Württembergische Metallwarenfabrik), manufacturer
German, 1853-present
Cutlery Zaha, 2007
Cromargan® Stainless Steel
Gift of Glenn Gissler 2010.121.2



Zaha Hadid, designer
British, b. Iraq, 1950-2016
WMF (Württembergische Metallwarenfabrik), manufacturer
German, 1853-present
cake fork, Cutlery Zaha: 5 piece menue set2007
Cromargan® stainless steel
Gift of Glenn Gissler 2010.121.2.1



Zaha Hadid, designer
British, b. Iraq, 1950-2016
WMF (Württembergische Metallwarenfabrik), manufacturer
German, 1853-present
table fork, Cutlery Zaha: 5 piece menue set2007
Cromargan® stainless steel
Gift of Glenn Gissler 2010.121.2.2



RISD MUSEUM

Zaha Hadid, designer
British, b. Iraq, 1950-2016
WMF (Württembergische Metallwarenfabrik), manufacturer
German, 1853-present
*table knife, Cutlery Zaha: 5 piece menue set*2007
Cromargan® stainless steel
Gift of Glenn Gissler 2010.121.2.3



Zaha Hadid, designer
British, b. Iraq, 1950-2016
WMF (Württembergische Metallwarenfabrik), manufacturer
German, 1853-present
*Table Spoon, Cutlery Zaha: 5 piece menue set*2007
Cromargan® stainless steel
Gift of Glenn Gissler 2010.121.2.4



Zaha Hadid, designer
British, b. Iraq, 1950-2016
WMF (Württembergische Metallwarenfabrik), manufacturer
German, 1853-present
*teaspoon, Cutlery Zaha: 5 piece menue set*2007
Cromargan® stainless steel
Gift of Glenn Gissler 2010.121.2.5



RISD MUSEUM

Mono, manufacturer
German, 1959 -
Michael Schneider, designer
German, b. 1962
Zeug Daily Flatware Set, 1995
Stainless steel
Gift of Glenn Gissler 2012.68.1



Michael Schneider, designer
German, b. 1962
Mono, manufacturer
German, 1959 -
*Table fork, Zeug Daily flatware set (4 piece)*1995
Stainless steel
Gift if Glenn Gissler 2012.68.1.1



Mono, manufacturer
German, 1959 -
Michael Schneider, designer
German, b. 1962
*Tablespoon, Zeug Daily flatware set (4 piece)*1995
Stainless steel
Gift of Glenn Gissler 2012.68.1.2



RISD MUSEUM

Mono, manufacturer
German, 1959 -
Michael Schneider, designer
German, b. 1962
*Coffee spoon, Zueg Daily flatware set (4 piece)*1995
Stainless steel
Gift of Glenn Gissler 2012.68.1.3



Mono, manufacturer
German, 1959 -
Michael Schneider, designer
German, b. 1962
*Knife, Zueg Daily flatware set (4 piece)*1995
Stainless steel
Gift of Glenn Gissler 2012.68.1.4



Alessi, manufacturer
Italian, 1921 -
Ettore Sottsass, designer
Italian, 1917-2007
Gozzi Alberto, consultant
Italian, b. 1939
Nuovo Milano Flatware Set, 1987
Stainless steel
Gift of Glenn Gissler 2012.68.2



Alessi, manufacturer
Italian, 1921 -
Ettore Sottsass, designer
Italian, 1917-2007
Gozzi Alberto, consultant
Italian, b. 1939
*Table fork, Nuovo Milano cutlery set*1987
Stainless steel
Gift of Glenn Gissler 2012.68.2.1



RISD MUSEUM

Alessi, manufacturer
Italian, 1921 -
Ettore Sottsass, designer
Italian, 1917-2007
Gozzi Alberto, consultant
Italian, b. 1939
*Dessert fork, Nuovo Milano cutlery set*1987
Stainless steel
Gift of Glenn Gissler 2012.68.2.2



Alessi, manufacturer
Italian, 1921 -
Ettore Sottsass, designer
Italian, 1917-2007
Gozzi Alberto, consultant
Italian, b. 1939
*Tablespoon, Nuovo Milano cutlery set*1987
Stainless steel
Gift of Glenn Gissler 2012.68.2.3



Alessi, manufacturer
Italian, 1921 -
Ettore Sottsass, designer
Italian, 1917-2007
Gozzi Alberto, consultant
Italian, b. 1939
*Coffee spoon, Nuovo Milano cutlery set*1987
Stainless steel
Gift of Glenn Gissler 2012.68.2.4



Alessi, manufacturer
Italian, 1921 -
Ettore Sottsass, designer
Italian, 1917-2007
Gozzi Alberto, consultant
Italian, b. 1939
*Table knife, Nuovo Milano cutlery set*1987
Stainless steel
Gift of Glenn Gissler 2012.68.2.5



RISD MUSEUM

Alessi, manufacturer
Italian, 1921 -
Ettore Sottsass, designer
Italian, 1917-2007
Gozzi Alberto, consultant
Italian, b. 1939
*Dessert knife, Nuovo Milano cutlery set*1987
Stainless steel
Gift of Glenn Gissler 2012.68.2.6



Iittala, manufacturer
Finnish, 1881 -
Renzo Piano, designer
Italian, b. 1937
Piano Flatware Set, 1998
Stainless steel
Gift of Glenn Gissler 2012.68.3



Iittala, manufacturer
Finnish, 1881 -
Renzo Piano, designer
Italian, b. 1937
*Dinner fork, Piano cutlery set (5 piece)*1998
Stainless steel
Gift of Glenn Gissler 2012.68.3.1



Iittala, manufacturer
Finnish, 1881 -
Renzo Piano, designer
Italian, b. 1937
*Dessert fork, Piano cutlery set (5 piece)*1998
Stainless steel
Gift of Glenn Gissler 2012.68.3.2



RISD MUSEUM

littala, manufacturer
Finnish, 1881 -
Renzo Piano, designer
Italian, b. 1937
*Dinner spoon, Piano cutlery set (5 piece)*1998
Stainless steel
Gift of Glenn Gissler 2012.68.3.3



littala, manufacturer
Finnish, 1881 -
Renzo Piano, designer
Italian, b. 1937
*Dessert spoon, Piano cutlery set (5 piece)*1998
Stainless steel
Gift of Glenn Gissler 2012.68.3.4



littala, manufacturer
Finnish, 1881 -
Renzo Piano, designer
Italian, b. 1937
*Dinner knife, Piano cutlery set (5 piece)*1998
Stainless steel
Gift of Glenn Gissler 2012.68.3.5



Bally Humanufactured, manufacturer
American, 1986-present
Boris Bally, designer
American, b. 1961
*X-panded Five-Piece Place Setting, X-panded Flatwear*1994
Silver with gilding
Museum purchase: gift of Joseph A. Chazan, MD 2014.26.1



RISD MUSEUM

Bally Humanufactured, manufacturer
American, 1986-present
Boris Bally, designer
American, b. 1961
*Large fork, X-panded Flatwear*1994
Silver with gilding
Museum purchase: gift of Joseph A. Chazan, MD 2014.26.1.1



Bally Humanufactured, manufacturer
American, 1986-present
Boris Bally, designer
American, b. 1961
*Small fork, X-panded Flatwear*1994
Silver with gilding
Museum purchase: gift of Joseph A. Chazan, MD 2014.26.1.2



RISD MUSEUM

Bally Humanufactured, manufacturer

American, 1986-present

Boris Bally, designer

American, b. 1961

*Large spoon, X-panded Flatwear*1994

Silver with gilding

Museum purchase: gift of Joseph A. Chazan, MD 2014.26.1.3



Bally Humanufactured, manufacturer

American, 1986-present

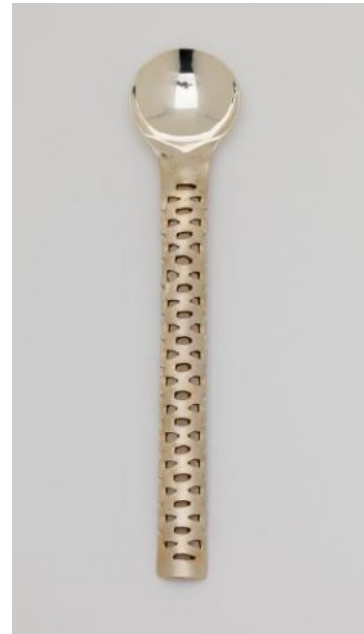
Boris Bally, designer

American, b. 1961

*Small spoon, X-panded Flatwear*1994

Silver with gilding

Museum purchase: gift of Joseph A. Chazan, MD 2014.26.1.4



RISD MUSEUM

Bally Humanufactured, manufacturer
American, 1986-present
Boris Bally, designer
American, b. 1961
*Knife, X-panded Flatwear*1994
Silver with gilding
Museum purchase: gift of Joseph A. Chazan, MD 2014.26.1.5



Bally Humanufactured, manufacturer
American, 1986-present
Boris Bally, designer
American, b. 1961
*Table Tools Five-Piece Place Setting, Table Tools*2001
Silver, oxidized brass
Museum purchase: gift of Joseph A. Chazan, MD 2014.26.2



RISD MUSEUM

Bally Humanufactured, manufacturer
American, 1986-present
Boris Bally, designer
American, b. 1961
*Large fork, Table Tools*2001
Silver and oxidized brass
Museum purchase: gift of Joseph A. Chazan, MD 2014.26.2.1



Bally Humanufactured, manufacturer
American, 1986-present
Boris Bally, designer
American, b. 1961
*Small fork, Table Tools*2001
Silver and oxidized brass
Museum purchase: gift of Joseph A. Chazan, MD 2014.26.2.2



RISD MUSEUM

Bally Humanufactured, manufacturer
American, 1986-present
Boris Bally, designer
American, b. 1961
*Large spoon, Table Tools*2001
Silver and oxidized brass
Museum purchase: gift of Joseph A. Chazan, MD 2014.26.2.3



Bally Humanufactured, manufacturer
American, 1986-present
Boris Bally, designer
American, b. 1961
*Small spoon, Table Tools*2001
Silver and oxidized brass
Museum purchase: gift of Joseph A. Chazan, MD 2014.26.2.4



RISD MUSEUM

Bally Humanufactured, manufacturer
American, 1986-present
Boris Bally, designer
American, b. 1961
*Knife, Table Tools*2001
Silver and oxidized brass
Museum purchase: gift of Joseph A. Chazan, MD 2014.26.2.5



Bally Humanufactured, manufacturer
American, 1986-present
Boris Bally, designer
American, b. 1961
*Ladder: Bulldozer Four-Piece Place Setting, Ladder: Bulldozer*2001
Silver
Museum purchase: gift of Joseph A. Chazan, MD 2014.26.3



RISD MUSEUM

Bally Humanufactured, manufacturer
American, 1986-present
Boris Bally, designer
American, b. 1961
Fork, Ladder: Bulldozer2001
Silver
Museum purchase: gift of Joseph A. Chazan, MD 2014.26.3.1



Bally Humanufactured, manufacturer
American, 1986-present
Boris Bally, designer
American, b. 1961
Large spoon, Ladder: Bulldozer2001
Silver
Museum purchase: gift of Joseph A. Chazan, MD 2014.26.3.2



RISD MUSEUM

Bally Humanufactured, manufacturer

American, 1986-present

Boris Bally, designer

American, b. 1961

Small spoon, Ladder: Bulldozer2001

Silver

Museum purchase: gift of Joseph A. Chazan, MD 2014.26.3.3



Bally Humanufactured, manufacturer

American, 1986-present

Boris Bally, designer

American, b. 1961

Knife, Ladder: Bulldozer2001

Silver

Museum purchase: gift of Joseph A. Chazan, MD 2014.26.3.4



RISD MUSEUM

Sigvard Bernadotte, designer
Swedish, 1907 - 2002
Broste, manufacturer
Danish, 1955 -
Scanline Flatware Set, 1950s
Nickel Bronze
Elizabeth T. and Dorothy N. Casey Fund 2015.110.1



Broste, manufacturer
Danish, 1955 -
Sigvard Bernadotte, designer
Swedish, 1907 - 2002
Scanline Salad Fork, 1950s
Nickel Bronze
Elizabeth T. and Dorothy N. Casey Fund 2015.110.1.1

Broste, manufacturer
Danish, 1955 -
Sigvard Bernadotte, designer
Swedish, 1907 - 2002
Scanline Dinner Fork, 1950s
Nickel Bronze
Elizabeth T. and Dorothy N. Casey Fund 2015.110.1.2

Broste, manufacturer
Danish, 1955 -
Sigvard Bernadotte, designer
Swedish, 1907 - 2002
Scanline Dessert Spoon, 1950s
Nickel Bronze
Elizabeth T. and Dorothy N. Casey Fund 2015.110.1.3

RISD MUSEUM

Broste, manufacturer
Danish, 1955 -
Sigvard Bernadotte, designer
Swedish, 1907 - 2002
Scanline Tablespoon, 1950s
Nickel Bronze
Elizabeth T. and Dorothy N. Casey Fund 2015.110.1.4

Broste, manufacturer
Danish, 1955 -
Sigvard Bernadotte, designer
Swedish, 1907 - 2002
Scanline Teaspoon, 1950s
Nickel Bronze
Elizabeth T. and Dorothy N. Casey Fund 2015.110.1.5

Broste, manufacturer
Danish, 1955 -
Sigvard Bernadotte, designer
Swedish, 1907 - 2002
Scanline Knife, 1950s
Nickel Bronze
Elizabeth T. and Dorothy N. Casey Fund 2015.110.1.6

Broste, manufacturer
Danish, 1955 -
Sigvard Bernadotte, designer
Swedish, 1907 - 2002
Scanline Butter Knife, 1950s
Nickel Bronze
Elizabeth T. and Dorothy N. Casey Fund 2015.110.1.7

RISD MUSEUM

Towle Silversmiths, manufacturer
American, 1882 -
Robert J. King, designer
American, 1917 - 2014
Contour Flatware Set, 1951
Sterling silver
Elizabeth T. and Dorothy N. Casey Fund 2015.110.11



Towle Silversmiths, manufacturer
American, 1882 -
Robert J. King, designer
American, 1917 - 2014
Contour Salad Fork, 1951
Sterling silver
Elizabeth T. and Dorothy N. Casey Fund 2015.110.11.1



RISD MUSEUM

Towle Silversmiths, manufacturer
American, 1882 -
Robert J. King, designer
American, 1917 - 2014
Contour Dinner Fork, 1951
Sterling silver
Elizabeth T. and Dorothy N. Casey Fund 2015.110.11.2



Towle Silversmiths, manufacturer
American, 1882 -
Robert J. King, designer
American, 1917 - 2014
Contour Tablespoon, 1951
Sterling silver
Elizabeth T. and Dorothy N. Casey Fund 2015.110.11.3



RISD MUSEUM

Towle Silversmiths, manufacturer
American, 1882 -
Robert J. King, designer
American, 1917 - 2014
Contour Teaspoon, 1951
Sterling silver
Elizabeth T. and Dorothy N. Casey Fund 2015.110.11.4



RISD MUSEUM

Towle Silversmiths, manufacturer
American, 1882 -
Robert J. King, designer
American, 1917 - 2014
Contour Knife, 1951
Sterling silver
Elizabeth T. and Dorothy N. Casey Fund 2015.110.11.5



Tsubame Shinko, manufacturer
Japanese, 1919 -
Takenobu Igarashi, designer
Japanese, b. 1944
T1-1 Flatware Set, 1990
Stainless steel
Elizabeth T. and Dorothy N. Casey Fund 2015.110.12



RISD MUSEUM

Tsubame Shinko, manufacturer

Japanese, 1919 -

Takenobu Igarashi, designer

Japanese, b. 1944

TI-1 Salad Fork, 1990

Stainless steel

Elizabeth T. and Dorothy N. Casey Fund 2015.110.12.1



Tsubame Shinko, manufacturer

Japanese, 1919 -

Takenobu Igarashi, designer

Japanese, b. 1944

TI-1 Dinner Fork, 1990

Stainless steel

Elizabeth T. and Dorothy N. Casey Fund 2015.110.12.2



RISD MUSEUM

Tsubame Shinko, manufacturer
Japanese, 1919 -
Takenobu Igarashi, designer
Japanese, b. 1944
TI-1 Soup Spoon, 1990
Stainless steel
Elizabeth T. and Dorothy N. Casey Fund 2015.110.12.3



Tsubame Shinko, manufacturer
Japanese, 1919 -
Takenobu Igarashi, designer
Japanese, b. 1944
TI-1 Teaspoon, 1990
Stainless steel
Elizabeth T. and Dorothy N. Casey Fund 2015.110.12.4



RISD MUSEUM

Tsubame Shinko, manufacturer
Japanese, 1919 -
Takenobu Igarashi, designer
Japanese, b. 1944
T1-1 Knife, 1990
Stainless steel
Elizabeth T. and Dorothy N. Casey Fund 2015.110.12.5



WMF (Württembergische Metallwarenfabrik), manufacturer
German, 1853-present
Wilhelm Wagenfeld, designer
German, 1900-1990
Form Flatware Set, 1952
Stainless steel
Elizabeth T. and Dorothy N. Casey Fund 2015.110.13



RISD MUSEUM

WMF (Württembergische Metallwarenfabrik), manufacturer
German, 1853-present
Wilhelm Wagenfeld, designer
German, 1900-1990
Form Salad Fork, 1952
Stainless steel
Elizabeth T. and Dorothy N. Casey Fund 2015.110.13.1



WMF (Württembergische Metallwarenfabrik), manufacturer
German, 1853-present
Wilhelm Wagenfeld, designer
German, 1900-1990
Form Dinner Fork, 1952
Stainless steel
Elizabeth T. and Dorothy N. Casey Fund 2015.110.13.2



RISD MUSEUM

WMF (Württembergische Metallwarenfabrik), manufacturer
German, 1853-present
Wilhelm Wagenfeld, designer
German, 1900-1990
Form Tablespoon, 1952
Stainless steel
Elizabeth T. and Dorothy N. Casey Fund 2015.110.13.3



WMF (Württembergische Metallwarenfabrik), manufacturer
German, 1853-present
Wilhelm Wagenfeld, designer
German, 1900-1990
Form Oval Soup Spoon, 1952
Stainless steel
Elizabeth T. and Dorothy N. Casey Fund 2015.110.13.4



RISD MUSEUM

WMF (Württembergische Metallwarenfabrik), manufacturer
German, 1853-present
Wilhelm Wagenfeld, designer
German, 1900-1990
Form Modern Hollow Knife, 1952
Stainless steel
Elizabeth T. and Dorothy N. Casey Fund 2015.110.13.5



Lino Sabattini, designer
Italian, b. 1925
Zani & Zani, manufacturer
Italian, 1936 -
Instrumenta Flatware Set, 1978
Stainless steel
Elizabeth T. and Dorothy N. Casey Fund 2015.110.14



RISD MUSEUM

Zani & Zani, manufacturer
Italian, 1936 -
Lino Sabattini, designer
Italian, b. 1925
Instrumenta Salad Fork, 1978
Stainless steel
Elizabeth T. and Dorothy N. Casey Fund 2015.110.14.1



Zani & Zani, manufacturer
Italian, 1936 -
Lino Sabattini, designer
Italian, b. 1925
Instrumenta Dinner Fork, 1978
Stainless steel
Elizabeth T. and Dorothy N. Casey Fund 2015.110.14.2



RISD MUSEUM

Zani & Zani, manufacturer
Italian, 1936 -
Lino Sabattini, designer
Italian, b. 1925
Instrumenta Soup Spoon, 1978
Stainless steel
Elizabeth T. and Dorothy N. Casey Fund 2015.110.14.3



Zani & Zani, manufacturer
Italian, 1936 -
Lino Sabattini, designer
Italian, b. 1925
Instrumenta Teaspoon, 1978
Stainless steel
Elizabeth T. and Dorothy N. Casey Fund 2015.110.14.4



RISD MUSEUM

Zani & Zani, manufacturer
Italian, 1936 -
Lino Sabattini, designer
Italian, b. 1925
Instrumenta Dinner Knife, 1978
Stainless steel
Elizabeth T. and Dorothy N. Casey Fund 2015.110.14.5



Zani & Zani, manufacturer
Italian, 1936 -
Lino Sabattini, designer
Italian, b. 1925
Instrumenta Butter Knife, 1978
Stainless steel
Elizabeth T. and Dorothy N. Casey Fund 2015.110.14.6

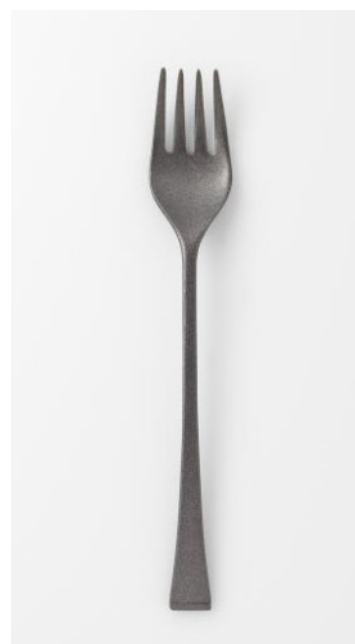


RISD MUSEUM

Carla Nencioni, designer
Italian, b. 1925
Armando Moleri, designer
Italian, b. 1928
Zani & Zani, manufacturer
Italian, 1936 -
Sabrina Flatware Set, 1978
Non-stick coated stainless steel
Elizabeth T. and Dorothy N. Casey Fund 2015.110.15



Zani & Zani, manufacturer
Italian, 1936 -
Carla Nencioni, designer
Italian, b. 1925
Armando Moleri, designer
Italian, b. 1928
Sabrina Salad Fork, 1978
Non-stick coated stainless steel
Elizabeth T. and Dorothy N. Casey Fund 2015.110.15.1



RISD MUSEUM

Zani & Zani, manufacturer
Italian, 1936 -
Carla Nencioni, designer
Italian, b. 1925
Armando Moleri, designer
Italian, b. 1928
Sabrina Dinner Fork, 1978
Non-stick coated stainless steel
Elizabeth T. and Dorothy N. Casey Fund 2015.110.15.2



Zani & Zani, manufacturer
Italian, 1936 -
Carla Nencioni, designer
Italian, b. 1925
Armando Moleri, designer
Italian, b. 1928
Sabrina Tablespoon, 1978
Non-stick coated stainless steel
Elizabeth T. and Dorothy N. Casey Fund 2015.110.15.3



RISD MUSEUM

Zani & Zani, manufacturer
Italian, 1936 -
Carla Nencioni, designer
Italian, b. 1925
Armando Moleri, designer
Italian, b. 1928
Sabrina Teaspoon, 1978
Non-stick coated stainless steel
Elizabeth T. and Dorothy N. Casey Fund 2015.110.15.4



Zani & Zani, manufacturer
Italian, 1936 -
Carla Nencioni, designer
Italian, b. 1925
Armando Moleri, designer
Italian, b. 1928
Sabrina Knife, 1978
Non-stick coated stainless steel
Elizabeth T. and Dorothy N. Casey Fund 2015.110.15.5



RISD MUSEUM

Zani & Zani, manufacturer
Italian, 1936 -
Carla Nencioni, designer
Italian, b. 1925
Armando Moleri, designer
Italian, b. 1928
Sabrina Small Knife, 1978
Non-stick coated stainless steel
Elizabeth T. and Dorothy N. Casey Fund 2015.110.15.6



Sergio Asti, designer
Italian, b. 1926
H.E. Lauffer Co., Inc., manufacturer
American, 1950 - 1992
Boca Decorata Flatware Set, 1976
Stainless steel
Elizabeth T. and Dorothy N. Casey Fund 2015.110.2



RISD MUSEUM

ICM/Lauffer, manufacturer
Sergio Asti, designer
Italian, b. 1926
Boca Decorata Fork, 1976
Stainless steel
Elizabeth T. and Dorothy N. Casey Fund 2015.110.2.1



ICM/Lauffer, manufacturer
Sergio Asti, designer
Italian, b. 1926
Boca Decorata Tablespoon, 1976
Stainless steel
Elizabeth T. and Dorothy N. Casey Fund 2015.110.2.2



RISD MUSEUM

ICM/Lauffer, manufacturer

Sergio Asti, designer

Italian, b. 1926

Boca Decorata Teaspoon, 1976

Stainless steel

Elizabeth T. and Dorothy N. Casey Fund 2015.110.2.3

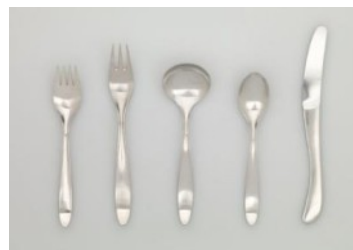


RISD MUSEUM

ICM/Lauffer, manufacturer
Sergio Asti, designer
Italian, b. 1926
Boca Decorata Knife, 1976
Stainless steel
Elizabeth T. and Dorothy N. Casey Fund 2015.110.2.4



Don Wallance, designer
American, 1909 - 1990
H.E. Lauffer Co., Inc., producer
American, 1950 - 1992
C. Hugo Pott, manufacturer
Germany, 1904 -
Design 1 / Pott 2721 Flatware Set, 1953
Stainless steel
Elizabeth T. and Dorothy N. Casey Fund 2015.110.3



RISD MUSEUM

Don Wallance, designer
American, 1909 - 1990
H.E. Lauffer Co., Inc., producer
American, 1950 - 1992
C. Hugo Pott, manufacturer
Germany, 1904 -
Design 1 / Pott 2721 Salad Fork, 1953
Stainless steel
Elizabeth T. and Dorothy N. Casey Fund 2015.110.3.1



Don Wallance, designer
American, 1909 - 1990
H.E. Lauffer Co., Inc., producer
American, 1950 - 1992
C. Hugo Pott, manufacturer
Germany, 1904 -
Design 1 / Pott 2721 Dinner Fork, 1953
Stainless steel
Elizabeth T. and Dorothy N. Casey Fund 2015.110.3.2



RISD MUSEUM

Don Wallance, designer
American, 1909 - 1990
H.E. Lauffer Co., Inc., producer
American, 1950 - 1992
C. Hugo Pott, manufacturer
Germany, 1904 -
Design 1 / Pott 2721 Soup Spoon, 1953
Stainless steel
Elizabeth T. and Dorothy N. Casey Fund 2015.110.3.3



RISD MUSEUM

Don Wallance, designer
American, 1909 - 1990
H.E. Lauffer Co., Inc., producer
American, 1950 - 1992
C. Hugo Pott, manufacturer
Germany, 1904 -
Design 1 / Pott 2721 Teaspoon, 1953
Stainless steel
Elizabeth T. and Dorothy N. Casey Fund 2015.110.3.4



RISD MUSEUM

Don Wallance, designer
American, 1909 - 1990
H.E. Lauffer Co., Inc., producer
American, 1950 - 1992
C. Hugo Pott, manufacturer
Germany, 1904 -
Design 1 / Pott 2721 Knife, 1953
Stainless steel
Elizabeth T. and Dorothy N. Casey Fund 2015.110.3.5



H.E. Lauffer Co., Inc., manufacturer
American, 1950 - 1992
Don Wallance, designer
American, 1909 - 1990
Design 3 Flatware Set, ca. 1960
Stainless steel
Elizabeth T. and Dorothy N. Casey Fund 2015.110.5



RISD MUSEUM

H.E. Lauffer Co., Inc., manufacturer
American, 1950 - 1992
Don Wallance, designer
American, 1909 - 1990
Design 3 Salad fork, ca. 1960
Stainless steel
Elizabeth T. and Dorothy N. Casey Fund 2015.110.5.1



H.E. Lauffer Co., Inc., manufacturer
American, 1950 - 1992
Don Wallance, designer
American, 1909 - 1990
Design 3 Dinner fork, ca. 1960
Stainless steel
Elizabeth T. and Dorothy N. Casey Fund 2015.110.5.2



RISD MUSEUM

H.E. Lauffer Co., Inc., manufacturer
American, 1950 - 1992
Don Wallance, designer
American, 1909 - 1990
Design 3 Soup spoon, ca. 1960
Stainless steel
Elizabeth T. and Dorothy N. Casey Fund 2015.110.5.3



H.E. Lauffer Co., Inc., manufacturer
American, 1950 - 1992
Don Wallance, designer
American, 1909 - 1990
Design 3 Teaspoon, ca. 1960
Stainless steel
Elizabeth T. and Dorothy N. Casey Fund 2015.110.5.4



RISD MUSEUM

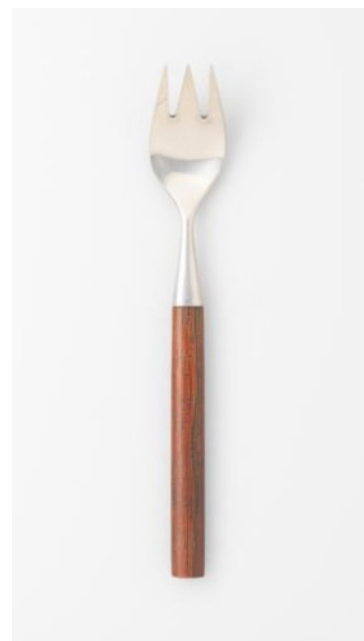
H.E. Lauffer Co., Inc., manufacturer
American, 1950 - 1992
Don Wallance, designer
American, 1909 - 1990
Design 3 Knife, ca. 1960
Stainless steel
Elizabeth T. and Dorothy N. Casey Fund 2015.110.5.5



Don Wallance, designer
American, 1909 - 1990
H.E. Lauffer Co., Inc., manufacturer
American, 1950 - 1992
Oslo Flatware Set, ca. 1960
Stainless steel with rosewood
Elizabeth T. and Dorothy N. Casey Fund 2015.110.7

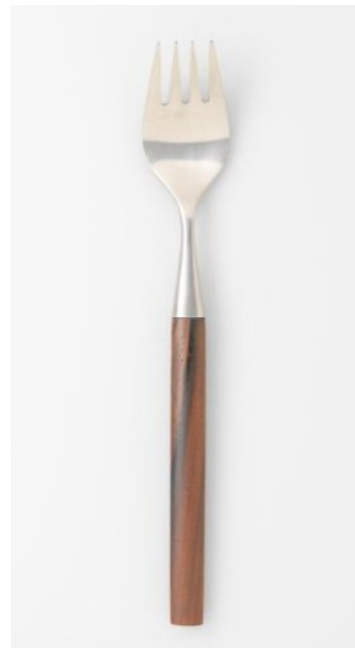


Don Wallance, designer
American, 1909 - 1990
H.E. Lauffer Co., Inc., manufacturer
American, 1950 - 1992
Oslo Salad fork, ca. 1960
Stainless steel with rosewood
Elizabeth T. and Dorothy N. Casey Fund 2015.110.7.1



RISD MUSEUM

Don Wallance, designer
American, 1909 - 1990
H.E. Lauffer Co., Inc., manufacturer
American, 1950 - 1992
Oslo Dinner fork, ca. 1960
Stainless steel with rosewood
Elizabeth T. and Dorothy N. Casey Fund 2015.110.7.2



Don Wallance, designer
American, 1909 - 1990
H.E. Lauffer Co., Inc., manufacturer
American, 1950 - 1992
Oslo Tablespoon, ca. 1960
Stainless steel with rosewood
Elizabeth T. and Dorothy N. Casey Fund 2015.110.7.3



RISD MUSEUM

Don Wallance, designer
American, 1909 - 1990
H.E. Lauffer Co., Inc., manufacturer
American, 1950 - 1992
Oslo Teaspoon, ca. 1960
Stainless steel with rosewood
Elizabeth T. and Dorothy N. Casey Fund 2015.110.7.4



Don Wallance, designer
American, 1909 - 1990
H.E. Lauffer Co., Inc., manufacturer
American, 1950 - 1992
Oslo Knife, ca. 1960
Stainless steel with rosewood
Elizabeth T. and Dorothy N. Casey Fund 2015.110.7.5



Sasaki, manufacturer
Japanese
Ward Bennett, designer
American, 1917 - 2003
Double Helix Flatware Set, 1985
Stainless steel
Elizabeth T. and Dorothy N. Casey Fund 2015.110.9



RISD MUSEUM

Sasaki, manufacturer

Japanese

Ward Bennett, designer

American, 1917 - 2003

Double Helix Salad Fork, 1985

Stainless steel

Elizabeth T. and Dorothy N. Casey Fund 2015.110.9.1



RISD MUSEUM

Sasaki, manufacturer

Japanese

Ward Bennett, designer

American, 1917 - 2003

Double Helix Dinner Fork, 1985

Stainless steel

Elizabeth T. and Dorothy N. Casey Fund 2015.110.9.2



RISD MUSEUM

Sasaki, manufacturer

Japanese

Ward Bennett, designer

American, 1917 - 2003

Double Helix Tablespoon, 1985

Stainless steel

Elizabeth T. and Dorothy N. Casey Fund 2015.110.9.3



RISD MUSEUM

Sasaki, manufacturer

Japanese

Ward Bennett, designer

American, 1917 - 2003

Double Helix Teaspoon, 1985

Stainless steel

Elizabeth T. and Dorothy N. Casey Fund 2015.110.9.4



RISD MUSEUM

Sasaki, manufacturer
Japanese
Ward Bennett, designer
American, 1917 - 2003
Double Helix Knife, 1985
Stainless steel
Elizabeth T. and Dorothy N. Casey Fund 2015.110.9.5



Colette
American, b. 1937
Pictogram #7 Brooch, 1991
Gold, silver wire, enamel and pearl
Gift of Robert Denton 1991.140



Colette
American, b. 1937
Box Bracelet # 2, 1991
silver; gold; enamel
Gift of Robert Denton 1991.152

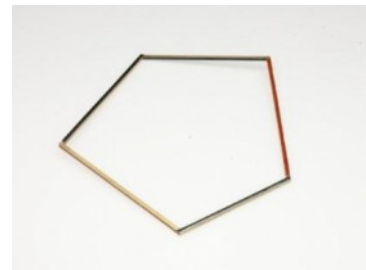


RISD MUSEUM

Sam Kramer
American, 1913-1964
Bracelet, ca. 1948
sterling silver
Walter H. Kimball Fund 1996.77



Giampaolo Babetto
Italian, b. 1947
Necklace, 1996
Gold with red epoxy and black niello
Mary B. Jackson Fund 1996.78.1



Giampaolo Babetto
Italian, b. 1947
Bracelet, 1996
Gold with red epoxy and black niello
Mary B. Jackson Fund 1996.78.2



Giampaolo Babetto
Italian, b. 1947
Ring, 1996
Gold with red epoxy and black niello
Gift of the artist 1996.79.1



RISD MUSEUM

Bernhard Schobinger

Swiss, b. 1946

Wie Tantropfen an der Sonne (Dewdrops on the Sun) Bracelet, 1999

Gold, enamel, and diamond

Gift of the artist 2000.21.1



Bernhard Schobinger

Swiss, b. 1946

Gebrochener Ast (Broken Branch) Bracelet, 1999

Gold with enamel

Mary B. Jackson Fund

Mary B. Jackson Fund 2000.21.3



Bernhard Schobinger

Swiss, b. 1946

Gespaltener Zweig mit Tantropfen (Split Branch with Dewdrops) Bracelet, 1999

Gold, enamel, and diamond

Mary B. Jackson Fund

Mary B. Jackson Fund 2000.21.4



RISD MUSEUM

Daniel Kruger
German, b. South Africa, b. 1951
Necklace, 1999
Silver and gold
Mary B. Jackson Fund 2000.3



Alexandra Bahlmann
German, b. 1961
bracelet, 2000
Eighteen-carat gold and beads
Jesse Metcalf Fund 2000.84.1



Alexandra Bahlmann
German, b. 1961
Necklace, 2000
Silver and gemstones
Jesse Metcalf Fund 2000.84.2



Gerhard Rothmann
German, b. 1941
Il Sole, La Luna (The Sun, The Moon), 1999
Gold; silver
Jesse Metcalf Fund 2000.85



RISD MUSEUM

Irmgard Zeitler
German, b. 1957
Torpedo Earrings, 1995
Gold, quartz crystal, spinel
Jesse Metcalf Fund 2000.86ab



Myra Mimlitsch-Gray
American, b. 1962
Brooch with Empty Settings, 2000
Silver
Jesse Metcalf Fund 2000.87



Hermann Jünger
German, 1928-2005
brooch, 1995
Gold
Helen M. Danforth Acquisition Fund 2001.20



Barbara Seidenath
Germany, b. 1960
Arctic Brooch, 1999
Sterling silver, enamel
Helen M. Danforth Acquisition Fund 2001.21.1



Barbara Seidenath
Germany, b. 1960
Wurzelblüte / Root Flower Earrings, 1991
Eighteen-carat gold; coral; enamel
Helen M. Danforth Acquisition Fund 2001.21.2ab



RISD MUSEUM

Olaf Skoogfors, goldsmith
American, b. Sweden, 1930 - 1975
Necklace, 1973
Sterling silver, ivory, and gold plate
Helen M. Danforth Acquisition Fund 2002.50



Bernhard Schobinger
Swiss, b. 1946
RISD Trash, 2000
Brass, copper, nichrome wire, and typing correction fluid
Daphne Farago Purchase Fund 2002.89



Manfred Nisslmüller
Austrian, b. 1940
Brooch, 2001
Metal, pearl, gold, and stones
Mary B. Jackson Fund 2002.90.1



RISD MUSEUM

Linda MacNeil
American, b. 1954
Neck Collar, 1988
Glass, brass, paint and gold
Gift of the Artist 2003.96



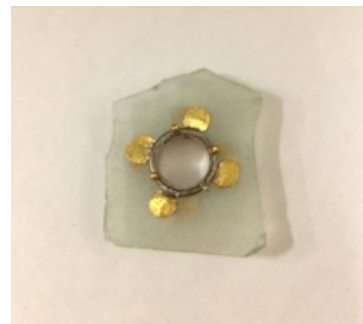
Giampaolo Babetto
Italian, b. 1947
Brooch, 2001
wire, gold
Gift of the Artist 2004.67.1.2



Giampaolo Babetto
Italian, b. 1947
Brooch, 2001
Wire, steel with red pigment
Gift of the Artist 2004.67.1.3



Daniel Kruger
German, b. South Africa, b. 1951
Pendant, 2001
glass; gold; silver
Gift of the Artist 2004.68



RISD MUSEUM

Gerhard Rothmann
German, b. 1941
Pendant, 2001
gold
Gift of the Artist 2004.69



Kay Whitcomb
American, 1921 - 2015
Bracelet, 1988
Enamel, copper and brass
Promised Gift of Deborah Krupenia and Witchulada Dina Keith, family
of the artist TL104.2016.1



Kay Whitcomb
American, 1921 - 2015
Four test strips,
Enamel on metal
Promised Gift of Deborah Krupenia and Witchulada Dina Keith, family
of the artist TL104.2016.1.11



RISD MUSEUM

Kay Whitcomb

American, 1921 - 2015

Pendant or mirror back "Sun To Rule the Day", 1995

Enamel, gold plate, gold foil

Promised Gift of Deborah Krupenia and Witchulada Dina Keith, family of the artist TL104.2016.3



Kay Whitcomb

American, 1921 - 2015

Ornament, 1977

Brass, silver, enamel, copper, gold wash?

Promised Gift of Deborah Krupenia and Witchulada Dina Keith, family of the artist TL104.2016.6



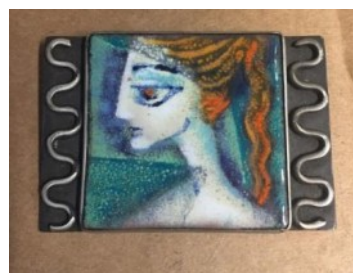
Kay Whitcomb

American, 1921 - 2015

Brooch,

Enamel and silver

Promised Gift of Deborah Krupenia and Witchulada Dina Keith, family of the artist TL104.2016.8



Kay Whitcomb

American, 1921 - 2015

Earrings,

Enamel and silver

Promised Gift of Deborah Krupenia and Witchulada Dina Keith, family of the artist TL104.2016.9.a-b

