

RISD MUSEUM

A View by Two: Contemporary Jewelry, February 2, 2001-April 15, 2001

The work in this show isn't about gigantic gemstones; it's about a kind of creative, playful relationship with an idea and materials that brings forth something unique and beautiful. -- Louis Mueller

A View By Two is the result of a collaboration between The RISD Museum and Rhode Island School of Design faculty members Louis Mueller and Barbara Seidenath. The exhibition presents works by fourteen internationally known and collected jewelers from Austria, Germany, Italy, the Netherlands, Switzerland, and the United States, chosen by Mueller and Seidenath for their innovative approach. Many of the participants also teach, thereby directly influencing the next generation of jewelers. The Museum has acquired several works from *A View By Two* to bring RISD's holdings into the 21st century.

Each of these objects is unique, and many are on view publicly for the first time. Earlier pieces, drawings, and photographs illuminate the artists' creative processes. Also included is a short visual "resume" representing the work of guest co-curators Mueller, who heads the Department of Jewelry and Light Metals, and Seidenath, adjunct faculty in that department. A selection from the Museum's collection of jewelry from ancient to modern times provides context, augmented by a loan from the Daphne Farago Collection: groundbreaking work by some of the earliest figures in studio jewelry, including Art Smith, Margaret de Patta, and Sam Kramer.

CHECKLIST OF THE EXHIBITION

Annelies Strba, 1947

Untitled (Bernhard Schobinger's Jewelry Modeled by his Daughter),

ca. 1986

Silver gelatin print

Gift of Bernhard Schobinger and Annelies Strba 2000.12.6

Bernhard Schobinger, Swiss, b. 1946

Allianz Ring (Alliance Ring), 1998

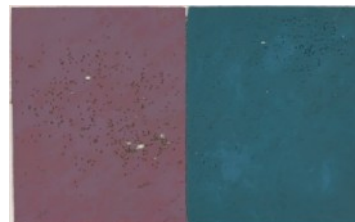
Gold; diamond; brass; rubber; felt

TL86.2002.6

Bernhard Schobinger, Swiss, b. 1946
Gebrochener Ast (Broken Branch) Bracelet, 1999
Gold with enamel
Mary B. Jackson Fund 2000.21.3



Bernhard Schobinger, Swiss, b. 1946
Wie Tantropfen an der Sonne (Dewdrops on the Sun) Bracelet, 1999
Gold, enamel, and diamond
Gift of the artist 2000.21.1



Bernhard Schobinger, Swiss, b. 1946
Gespaltener Zweig mit Tantropfen (Split Branch with Dewdrops) Bracelet, 1999
Gold, enamel, and diamond
Mary B. Jackson Fund 2000.21.4



RISD MUSEUM

Annelies Strba, 1947

Untitled (Bernhard Schobinger's Jewelry Modeled by his Daughter),

ca. 1986

Gelatin silver print

Gift of Bernhard Schobinger and Annelies Strba 2000.12.1

Annelies Strba, 1947

Untitled (Bernhard Schobinger's Jewelry Modeled by his Daughter),

ca. 1986

Silver gelatin print

Gift of Bernhard Schobinger and Annelies Strba 2000.12.2

Annelies Strba, 1947

Untitled (Bernhard Schobinger's Jewelry Modeled by his Daughter),

ca. 1986

Silver gelatin print

Gift of Bernhard Schobinger and Annelies Strba 2000.12.3

Annelies Strba, 1947

Untitled (Bernhard Schobinger's Jewelry Modeled by his Daughter),

ca. 1986

Gelatin silver print

Gift of Bernhard Schobinger and Annelies Strba 2000.12.14

Annelies Strba, 1947

Untitled (Bernhard Schobinger's Jewelry Modeled by his Daughter),

ca. 1986

Silver gelatin print

RISD MUSEUM

Gift of Bernhard Schobinger and Annelies Strba 2000.12.5

Bernhard Schobinger, Swiss, b. 1946
For A Dakini, 1999
Pearl; coral; porcelain; found objects
TL86.2002.3

Annelies Strba, 1947
Untitled (Bernhard Schobinger's Jewelry Modeled by his Daughter),
ca. 1986
Silver gelatin print
Gift of Bernhard Schobinger and Annelies Strba 2000.12.7

Annelies Strba, 1947
Untitled (Bernhard Schobinger's Jewelry Modeled by his Daughter),
ca. 1986
Silver gelatin print
Gift of Bernhard Schobinger and Annelies Strba 2000.12.8

Annelies Strba, 1947
Untitled (Bernhard Schobinger's Jewelry Modeled by his Daughter),
ca. 1986
Silver gelatin print
Gift of Bernhard Schobinger and Annelies Strba 2000.12.9

RISD MUSEUM

Annelies Strba, 1947

Untitled (Bernhard Schobinger's Jewelry Modeled by his Daughter),
ca. 1986

Gelatin silver print

Gift of Bernhard Schobinger and Annelies Strba 2000.12.10

Annelies Strba, 1947

Untitled (Bernhard Schobinger's Jewelry Modeled by his Daughter),
ca. 1986

Gelatin silver print

Gift of Bernhard Schobinger and Annelies Strba 2000.12.11

Annelies Strba, 1947

Untitled (Bernhard Schobinger's Jewelry Modeled by his Daughter),
ca. 1986

Gelatin silver print

Gift of Bernhard Schobinger and Annelies Strba 2000.12.12

Manfred Bischoff, German, 1947 - 2015

John Cage, Earrings and Drawing, 1999

Gold; coral; graphite, paper

Helen M. Danforth Acquisition Fund 2001.19



RISD MUSEUM

Annelies Strba, 1947

Untitled (Bernhard Schobinger's Jewelry Modeled by his Daughter),
ca. 1986

Silver gelatin print

Gift of Bernhard Schobinger and Annelies Strba 2000.12.4

Giampaolo Babetto, Italian, b. 1947

Untitled Drawing - Study, Seven Blue, Brown and Yellow Forms, 1996

Pencil; watercolor; marker (drawing instrument); pen and ink

Gift of the artist 1996.79.6

Ruudt Peters, Dutch, b.1950

Lapis "Viriditas" Collar, 1997

Silver; malachite (mineral)

Jesse Metcalf Fund 2000.88



RISD MUSEUM

Gerhard Rothmann, German, b. 1941
Il Sole, La Luna (The Sun, The Moon), 1999
Gold; silver
Jesse Metcalf Fund 2000.85



Daniel Kruger, German, b. South Africa, b. 1951
Necklace, 1999
Silver and gold
Mary B. Jackson Fund 2000.3

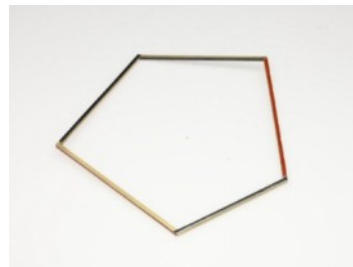


Ted Noten, Netherlandish, b. 1956
Baby-knuckle-duster, 1999
Acrylic; diamond; gold; pearl; fly; thorn (plant material)
Jesse Metcalf Fund 2000.90



RISD MUSEUM

Giampaolo Babetto, Italian, b. 1947
Necklace, 1996
Gold with red epoxy and black niello
Mary B. Jackson Fund 1996.78.1



Giampaolo Babetto, Italian, b. 1947
Bracelet, 1996
Gold with red epoxy and black niello
Mary B. Jackson Fund 1996.78.2



Giampaolo Babetto, Italian, b. 1947
Ring, 1996
Gold with red epoxy and black niello
Gift of the artist 1996.79.1



Bernhard Schobinger, Swiss, b. 1946
Schrödinger's Katze (Schrödinger's Cat), 1997
Enamel; iron; wire; pearl
TL86.2002.5

RISD MUSEUM

Giampaolo Babetto, Italian, b. 1947

Untitled Drawing - Study with Multiple Bar Shapes, 1996

Pencil; watercolor; marker (drawing instrument); pen and ink

Gift of the artist 1996.79.5

Bernhard Schobinger, Swiss, b. 1946

Diamant Sägen Kreuz (Diamond Saw Cross), 2000

Wire

TL86.2002.4

Giampaolo Babetto, Italian, b. 1947

Untitled Drawing - Study with Light Blue Watercolor Cross-form, 1996

Pencil; watercolor; marker (drawing instrument); pen and ink

Gift of the artist 1996.79.7

Giampaolo Babetto, Italian, b. 1947

Untitled Drawing - Study inscribed Primavera, 1996

Pencil; watercolor; marker (drawing instrument); pen and ink

Gift of the artist 1996.79.8

RISD MUSEUM

Alexandra Bahlmann, German, b. 1961
bracelet, 2000
Eighteen-carat gold and beads
Jesse Metcalf Fund 2000.84.1



Alexandra Bahlmann, German, b. 1961
Necklace, 2000
Silver and gemstones
Jesse Metcalf Fund 2000.84.2



Bernhard Schobinger, Swiss, b. 1946
RISD Trash, 2000
Brass, copper, nichrome wire, and typing correction fluid
Daphne Farago Purchase Fund 2002.89



Bernhard Schobinger, Swiss, b. 1946
Beton Stahr, 1999
Diamond; sapphire; ruby; tourmaline
TL86.2002.1

RISD MUSEUM

Bernhard Schobinger, Swiss, b. 1946
Finger Und Perle (Finger and Pearl), 2000
Gold; pearl; silver
TL86.2002.2

Annelies Strba, 1947
Untitled (Bernhard Schobinger's Jewelry Modeled by his Daughter),
ca. 1986
Gelatin silver print
Gift of Bernhard Schobinger and Annelies Strba 2000.12.15

Giampaolo Babetto, Italian, b. 1947
Untitled Drawing - Pencil Study with two colored Pentagons, 1996
Pencil; watercolor; marker (drawing instrument); pen and ink
Gift of the artist 1996.79.4

Irmgard Zeitler, German, b. 1957
Root, 1992
Gold; Quartz crystal; diamond
TL95.00.2

Sondra Sherman, American, b. 1958
Study for Gertrude II, 1999
Sterling silver; crystal (lead glass)
TL98.00.1

RISD MUSEUM

Sondra Sherman, American, b. 1958
Pinstripe Pearls, 1999
Sterling silver; eighteen-carat gold
TL98.00.2

Sondra Sherman, American, b. 1958
Gents Rings?: Pink Dots, 1999
Sterling silver
TL98.00.3

Sondra Sherman, American, b. 1958
Pinstripe Solitaire, 1999
Sterling silver and epoxy
Jesse Metcalf Fund 2000.89



Sondra Sherman, American, b. 1958
Signet Ring for Lance-Loud, 1999
Eighteen-carat gold
TL98.00.5

Sondra Sherman, American, b. 1958
Drawing, 1999
Mixed media
TL98.00.6

RISD MUSEUM

Sondra Sherman, American, b. 1958

Drawing, 1999

Mixed media

TL98.00.7

Annelies Strba, 1947

Untitled (Bernhard Schobinger's Jewelry Modeled by his Daughter),

ca. 1986

Gelatin silver print

Gift of Bernhard Schobinger and Annelies Strba 2000.12.13

Irmgard Zeitler, German, b. 1957

Flower, 1992

Gold; sterling silver; acrylic; glass

TL95.00.1

Myra Mimlitsch-Gray, American, b. 1962

drawing, 1998-1999

Ink; marker (drawing instrument)

TL96.00.6

RISD MUSEUM

Irmgard Zeitler, German, b. 1957
Anhänger, 1999
Gold; amethyst; diamond
TL95.00.3

Irmgard Zeitler, German, b. 1957
Earrings, 1999
Gold; pearl; diamond
TL95.00.4

Irmgard Zeitler, German, b. 1957
Carnation Pink, 1999
Gold; garnet; amethyst
TL95.00.5

Irmgard Zeitler, German, b. 1957
Potato, 1999
Gold; garnet; spinel
TL95.00.6

Irmgard Zeitler, German, b. 1957
Blues, 2000
Gold; sapphire; diamond
TL95.00.7

RISD MUSEUM

Irmgard Zeitler, German, b. 1957
Torpedo Earrings, 1995
Gold, quartz crystal, spinel
Jesse Metcalf Fund 2000.86ab



Irmgard Zeitler, German, b. 1957
Potato, 1998
Gold; pearl; Quartz crystal
TL95.00.9

Sondra Sherman, American, b. 1958
Hidden Agender, 2000
Gold
TL98.00.8

Annelies Strba, 1947
Untitled (Bernhard Schobinger's Jewelry Modeled by his Daughter),
ca. 1986
Silver gelatin print
Gift of Bernhard Schobinger and Annelies Strba 2000.12.23

Annelies Strba, 1947
Untitled (Bernhard Schobinger's Jewelry Modeled by his Daughter),
ca. 1986
Gelatin silver print
Gift of Bernhard Schobinger and Annelies Strba 2000.12.16

RISD MUSEUM

Annelies Strba, 1947

Untitled (Bernhard Schobinger's Jewelry Modeled by his Daughter),
ca. 1986

Gelatin silver print

Gift of Bernhard Schobinger and Annelies Strba 2000.12.17

Annelies Strba, 1947

Untitled (Bernhard Schobinger's Jewelry Modeled by his Daughter),
ca. 1986

Gelatin silver print

Gift of Bernhard Schobinger and Annelies Strba 2000.12.18

Annelies Strba, 1947

Untitled (Bernhard Schobinger's Jewelry Modeled by his Daughter),
1985

Silver gelatin print

Gift of Bernhard Schobinger and Annelies Strba 2000.12.19

Annelies Strba, 1947

Untitled (Bernhard Schobinger's Jewelry Modeled by his Daughter),
1986

Silver gelatin print

Gift of Bernhard Schobinger and Annelies Strba 2000.12.20

RISD MUSEUM

Annelies Strba, 1947

Untitled (Bernhard Schobinger's Jewelry Modeled by his Daughter),

ca. 1986

Silver gelatin print

Gift of Bernhard Schobinger and Annelies Strba 2000.12.21

Annelies Strba, 1947

Untitled (Bernhard Schobinger's Jewelry Modeled by his Daughter),

ca. 1986

Silver gelatin print

Gift of Bernhard Schobinger and Annelies Strba 2000.12.22

Myra Mimlitsch-Gray, American, b. 1962

Drawing, 1998-1999

Ink; marker (drawing instrument)

TL96.00.8

Bernhard Schobinger, Swiss, b. 1946

Gespaltener Zweig mit Tantropfen (Split Branch with Dewdrops), 1999

Metal; pen

Mary B. Jackson Fund 2000.21.5ab



Myra Mimlitsch-Gray, American, b. 1962

Drawing, 1998-1999

Ink; marker (drawing instrument)

TL96.00.7

RISD MUSEUM

Annelies Strba, 1947

Untitled (Bernhard Schobinger's Jewelry Modeled by his Daughter),

ca. 1986

Silver gelatin print

Gift of Bernhard Schobinger and Annelies Strba 2000.12.24

Annelies Strba, 1947

Untitled (Bernhard Schobinger's Jewelry Modeled by his Daughter),

ca. 1986

Silver gelatin print

Gift of Bernhard Schobinger and Annelies Strba 2000.12.25

Myra Mimlitsch-Gray, American, b. 1962

Cluster Prong Ring, 2000

Silver

TL96.00.1

Myra Mimlitsch-Gray, American, b. 1962

Frozen Chain Neckpiece, 2000

Silver; solder

TL96.00.2

RISD MUSEUM

Myra Mimlitsch-Gray, American, b. 1962
Brooch with Empty Settings, 2000
Silver
Jesse Metcalf Fund 2000.87



Myra Mimlitsch-Gray, American, b. 1962
Drawing, 1998-1999
Ink; marker (drawing instrument)
TL96.00.4

Myra Mimlitsch-Gray, American, b. 1962
Drawing, 1998-1999
Ink; marker (drawing instrument)
TL96.00.5

Irmgard Zeitler, German, b. 1957
Phallus, 1998
Gold; pearl; Quartz crystal
TL95.00.10

RISD MUSEUM

Bernhard Schobinger, Swiss, b. 1946
Wie Tantropfen an der Sonne (Dewdrops on the Sun), 1999
Metal; cotton; pen
Gift of the artist 2000.21.2ab

