

Pat Steir: Drawing Out of Line, February 19, 2010-July 3, 2010

A major figure in American art since the 1970s, Pat Steir has created some of the most ambitious and challenging drawings of the late 20th century. Organized by RISD curator Jan Howard and independent curator Susan Harris, *Pat Steir: Drawing Out of Line* presents 40 years of work focusing on her exploration of the vocabulary of drawing.

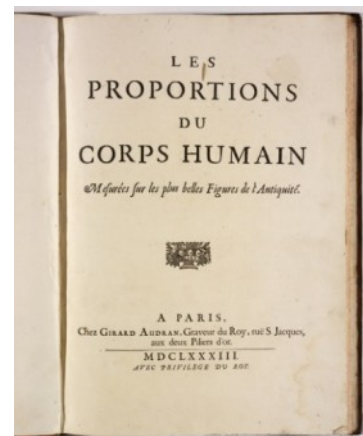
CHECKLIST OF THE EXHIBITION

Gérard Audran, French, 1640-1703

Les Proportions du Corps Humain mesurées sur les plus belles Figures de l'Antiquité (*The Proportions of the Human Body Measured on the Most Beautiful Figures from Antiquity*), 1683

Engravings on paper

Helen M. Danforth Acquisition Fund 2007.63



Pat Steir, American, b. 1938

The Austria Group. No. 2, 1991

Graphite, ink, tempera, and blue watercolor pencil on paper

Purchased with funds from the Paula and Leonard Granoff Fund and Donald Stanon 2009.28



Pat Steir, American, b. 1938

Introduction, The Burial Mound Series, 1976

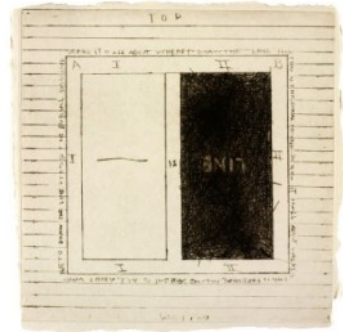
Drypoint on HMP handmade paper

Helen M. Danforth Acquisition Fund 2009.82.1

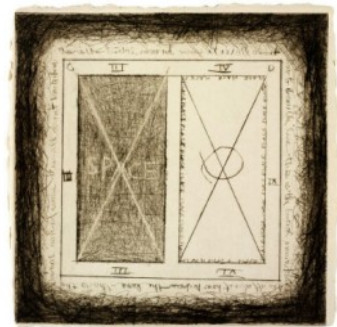


RISD MUSEUM

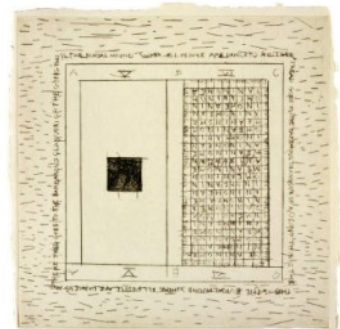
Pat Steir, American, b. 1938
Little Line, The Burial Mound Series, 1976
Seven drypoint prints on handmade paper
Helen M. Danforth Acquisition Fund 2009.82.2



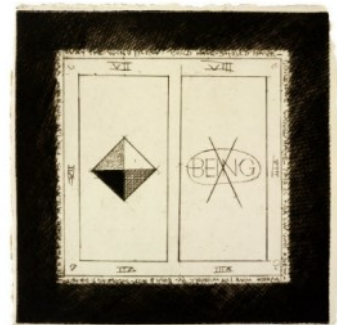
Pat Steir, American, b. 1938
Space, The Burial Mound Series, 1976
Seven drypoint prints on handmade paper
Helen M. Danforth Acquisition Fund 2009.82.3



Pat Steir, American, b. 1938
Meaning, The Burial Mound Series, 1976
Drypoint on HMP handmade paper
Helen M. Danforth Acquisition Fund 2009.82.4

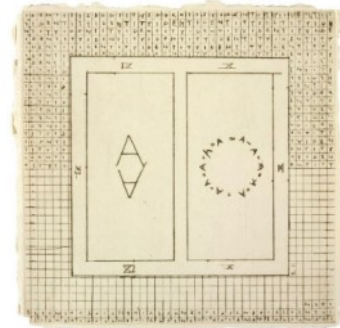


Pat Steir, American, b. 1938
Being, The Burial Mound Series, 1976
Seven drypoint prints on handmade paper
Helen M. Danforth Acquisition Fund 2009.82.5

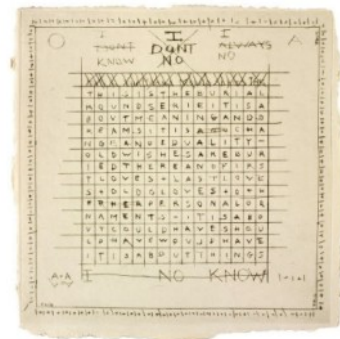


RISD MUSEUM

Pat Steir, American, b. 1938
Identity, The Burial Mound Series, 1976
drypoint print on handmade paper
Helen M. Danforth Acquisition Fund 2009.82.6



Pat Steir, American, b. 1938
I Don't Know, The Burial Mound Series, 1976
drypoint print on HMP handmade paper
Helen M. Danforth Acquisition Fund 2009.82.7



Pat Steir, American, b. 1938
The Burial Mound at Stonehenge, 1973
Graphite, ink and watercolor on paper
Purchased in honor of Hope Alswang, Director of the Museum of Art,
Rhode Island School of Design, 2005-2009; accessioned by the 2009-
2010 Fine Arts Committee; Georgianna Sayles Aldrich Fund 2009.83

