

RISD MUSEUM

Modernism in the Americas, June 20, 2003-August 31, 2003

From the 1910s through the mid-20th century, artists in the United States and Latin America strove to define themselves in the face of prevailing European modernism. The 1913 Armory Show brought international avant-garde art to New York, highlighting a new visual language of abstraction: the fragmented and reassembled forms of Cubism and other contemporary movements. In the years that followed, artists throughout the Americas evaluated these shockingly new styles and fashioned their own responses to modernism.

A new generation of artists confronted European influence head-on, applying their own vision to subjects that resonated with meaning for North American and Latin American audiences. As urbanization increased, views of cities and their inhabitants proliferated. New York's skyline rose rapidly, punctuated by a completely contemporary building type, the skyscraper. Smokestacks and railroads invaded the rural landscape, signaling changes in life and work. Artists responded by reassessing the relationship of humans to their increasingly industrialized environment. Fresh styles and subjects reflected life on this side of the Atlantic, bringing into focus the richly textured and multiple meanings of modernism in the Americas.

CHECKLIST OF THE EXHIBITION

Oscar Bluemner, American, 1867-1938
Rosy Light, from the series, *Suns and Moons*, 1927
Watercolor on paper
Anonymous gift 1992.001.23



John Marin, American, 1870-1953
Brooklyn Bridge, 1913
Drypoint on paper
Anonymous gift 1992.001.92

RISD MUSEUM

Reginald Marsh, American, 1898-1954
Penn Station, 1929
Lithograph on paper
Anonymous gift 1992.001.97



Louis Lozowick, American, b. Russia, 1892-1973
Luna Park, ca. 1929
Chalk, ink, pencil, and conté crayon on paper
Gift of Mr. and Mrs. Arthur Stambler 1994.091



Jacob Lawrence, American, 1917-2000
There is an Average of Four Bars to Every Block, from the Harlem Series, 1943
Gouache, ink, and pencil on paper
Mary B. Jackson Fund 43.565



Edward Hopper, American, 1882-1967
Night Shadows, 1921
Etching on paper
Gift of Koffler Family Foundation, Mr. and Mrs. Gilman Angier,
Houghton P. Metcalf, Jr., Mr. and Mrs. Norman Bolotow, Mr and Mrs.
C. George Taylor and Beguest of Lyra Brown Nickerson by exchange
83.003



RISD MUSEUM

Hugh Ferriss, American, 1889
Proposed Majestic Hotel, New York City, 1930
Charcoal, crayon, and graphite on paper
Collection of Mr. Stephen Sudak EL013.91



Howard Norton Cook, American, 1901-1980
George Charles Miller, American, 1894-1965
George Washington Bridge with B, 1931
Lithograph on paper
Jesse Metcalf Fund 2000.60.1

RISD MUSEUM

Manuel Alvarez Bravo, Mexican, 1902-2002

Optic Parable (Parábola Óptica), 1931

Gelatin silver print

Nancy Sayles Day Collection of Modern Latin American Art 79.032



Charles Demuth, American, 1883-1935

Bicyclists, ca. 1916 - 1917

Watercolor and pencil on paper

Gift of the Fazzano Brothers 84.198.1178



George Wesley Bellows, American, 1882-1925

Rain on the River, 1908

Oil on canvas

Jesse Metcalf Fund 15.063

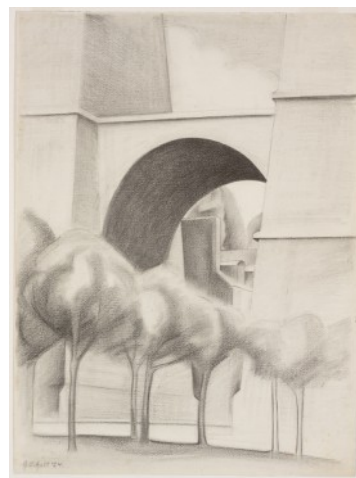


RISD MUSEUM

Niles Spencer, American, 1893-1952
Steel Country, 1937
Oil on canvas
Jesse Metcalf Fund 39.121



George Copeland Ault, American, 1891-1948
Aqueduct, Morlaix, 1924
Graphite on paper
Anonymous gift 1992.001.6



Berenice Abbott, American, 1898-1991
New York at Night, 1932
Gelatin silver print
Museum purchase with funds from the National Endowment for the Arts 73.167



RISD MUSEUM

Berenice Abbott, American, 1898-1991

Automat, 977 8th Avenue Manhattan, February 10, 1936, 1936

Gelatin silver print

Museum purchase with funds from the National Endowment for the Arts 73.165



Helen Torr, American, 1886-1967

Abstract Landscape #9, late 1800s-mid 1900s

Charcoal on paper

Mary B. Jackson Fund 1995.035



Georgia O'Keeffe, American, 1887-1986

Fall Maple Leaves, 1925

Oil on canvas

Gift of the Robert R. Young Foundation in honor of The Robert R. Young Family 1987.078.4



RISD MUSEUM

Georgia O'Keeffe, American, 1887-1986

Pink Spirea, ca. 1922

Oil on canvas

Gift of the Robert R. Young Foundation in honor of The Robert R. Young Family 1987.078.1



John Marin, American, 1870-1953

Lake George: On Andrew's Island, 1923

Watercolor

Gift of Madeleine Sharrer Poland in Memory of Reginald Harkness Poland, an alumnus and good friend of Brown University 77.139

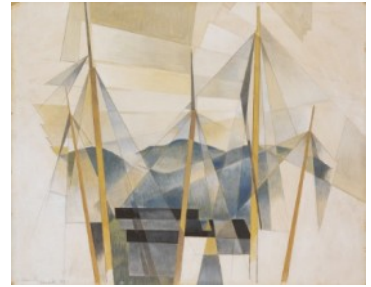


RISD MUSEUM

Arthur Garfield Dove, American, 1880-1946
Hillside, 1932
Charcoal and watercolor on wove paper
Helen M. Danforth Acquisition Fund 1995.014



Charles Demuth, American, 1883-1935
Gloucester, 1919
Ink wash, gouache, and graphite on paper
Jesse Metcalf Fund 39.098



Margaret Bourke-White, American, 1904-1971
Untitled (Abstraction), 1933
Gelatin silver print
Gift of the family and friends of Jean Fain in honor of her 50th birthday 85.009



Aaron Douglas, American, 1899-1979
Dance Magic, 1930
Gouache and chalk on illustration board
Gift of Mrs. Leonard Granoff 82.188.1



RISD MUSEUM

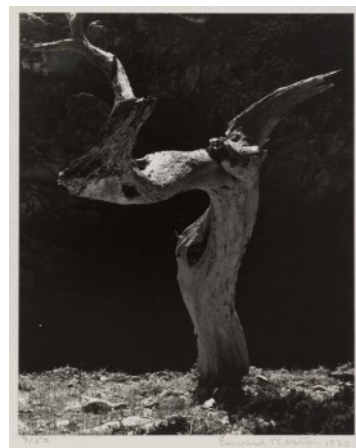
William Zorach, American, 1887-1966
Birch Forest, late 1800s-mid 1900s
Watercolor and pencil on paper
Anonymous gift 1992.001.144



Grant Wood, American, 1891-1942
Plowing on Sunday, 1934
Conté crayon, ink, colored pencil, and gouache on brown wove paper
Gift of Mrs. Murray S. Danforth 38.015



Edward Weston, American, 1886-1958
No. 6 Cypress-Point Lobos, 1930
Gelatin silver print
Gift of John J. Slocum in memory of Myles Standish Slocum 81.082



RISD MUSEUM

Sibley Smith, American, b. 1908
Rural Nocturne, 1938
Watercolor, ink, and charcoal with scraping on paper
Jesse Metcalf Fund 40.154



Arthur Rothstein, American, 1915 - 1985
Girl at Gee's Bend, Alabama, 1937
Gelatin silver print
Walter H. Kimball Fund 80.072

Diego Rivera, Mexican, 1886-1957
Study for The Conquest of Air, 1932
Graphite on tracing paper
Nancy Sayles Day Collection of Modern Latin American Art 68.026



RISD MUSEUM

Diego Rivera, Mexican, 1886-1957

Woman Nursing Child, 1929

Watercolor and graphite on paper

Nancy Sayles Day Collection of Modern Latin American Art 1988.005



Diego Rivera, Mexican, 1886-1957

Modesta, 1939

Oil on canvas

Collection of Constance B. Witherby EL010.85



Nancy Elizabeth Prophet, American, 1890-1960, (RISD 1918)

Negro Head, before 1927

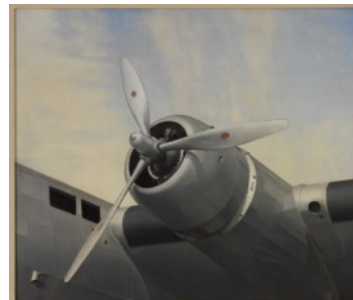
Wood

Gift of Miss Eleanor B. Green 35.780



RISD MUSEUM

Charles Sheeler, American, 1883-1965
Yankee Clipper, 1939
Oil on canvas
Jesse Metcalf Fund and Mary B. Jackson Fund 41.006



Dorothea Lange, American, 1895-1965
She's a Jim Dandy, 1938
Gelatin silver print
Walter H. Kimball Fund 80.150

Charles Sheeler, American, 1883-1965
House with Trees, 1915
Oil on panel
Jesse Metcalf Fund 39.122



Elizabeth Catlett, Mexican, b. United States, 1915-2012
The Lesson, ca. 1948
Crayon on paper
Helen M. Danforth Acquisition Fund 2002.3



RISD MUSEUM

Charles Ephraim Burchfield, American, 1893-1967

Violets, 1917

Watercolor on paper

Museum Works of Art Fund 44.564

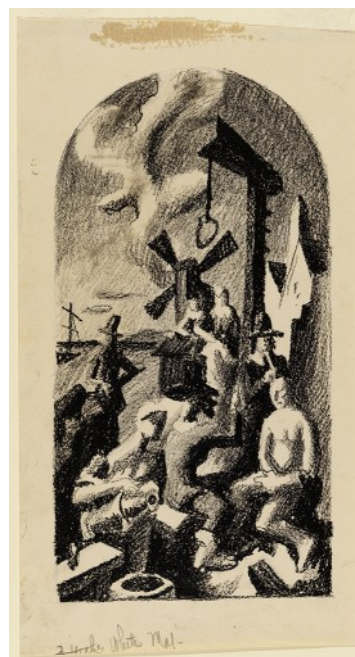


Thomas Hart Benton, American, 1889-1975

Mural study for "History of New York: Colonial Era", from the portfolio *Mural Studies (two sketches)*, 1900s

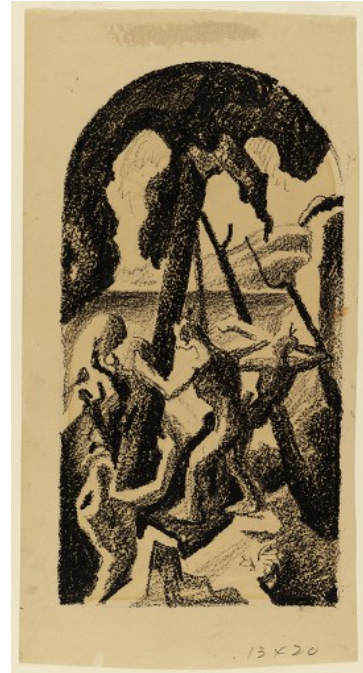
Crayon and pencil on paper

The Albert Pilavin Memorial Collection of 20th Century American Art
75.037.1



RISD MUSEUM

Thomas Hart Benton, American, 1889-1975
Mural Study for "History of New York: Indians", Mural Studies (two sketches), 1900s
Crayon and pencil on paper
The Albert Pilavin Memorial Collection of 20th Century American Art
75.037.2



Abraham Walkowitz, American, 1878-1965
City Abstraction, ca. 1915
Charcoal on paper
Gift of Arthur and Sybil Kern 2003.37



James Van Der Zee, American, 1886-1983
Couple, Harlem, from the portfolio Eighteen Photographs, 1932
Gelatin silver print
Museum purchase with the aid of funds from the National
Endowment for the Arts 80.232.16



RISD MUSEUM

Joaquín Torres-García, Uruguayan, 1874-1949

1943 America, 1943

Oil on board

Gift of the Torres-García family to the Nancy Sayles Day Collection of Modern Latin American Art 68.104



Joseph Stella, American, 1877-1946

Underpass, Allegheny, 1908

Charcoal on paper

Anonymous gift 1992.001.129



Imogene Cunningham, American, 1883-1976

Agave 1, 1920

Gelatin silver print

Museum purchase with funds from the National Endowment for the Arts 75.082



Juan O'Gorman, Mexican, 1905-1982

Pulque Drinkers, 1929

Pencil on paper

Nancy Sayles Day Collection of Modern Latin American Art 66.160

