

RISD MUSEUM

Locally Made, July 12, 2013–November 15, 2013

Locally Made, the RISD Museum's first large survey of work from the greater Providence area in more than 20 years, features videos, recent acquisitions, and programs that celebrate the varied and vital practice of art and craftsmanship across the region. Demonstrations, collaborations, and other creative experiments will take place in the Museum every day between July 18 and November 3, with participants including visual artists, designers, writers, performers, DJs, and others.

Micah Barrett, John Caserta, Lucy Hitchcock, and Ben Shaykin of the Design Office—a local shared workspace for independent interdisciplinary designers—collaborated on the exhibition graphics.

Jed Hancock-Brainerd, Rebecca Noon, and Jeremy Radtke collaborated on the fabrication of School House Long House, which marries the schoolhouse and the American Indian longhouse—two structures devoted to community sharing. By borrowing the forms, philosophies, and aesthetics of buildings where performances happen, stories are told, dinners are served, and knowledge is passed on, this project space refers to rich regional histories while allowing new visions of collective sharing and public performance to emerge. The benches and tables in School House Long House were designed by Simcha Davis and Jeremy Radtke and made from regionally sourced rough-cut pine using the CNC cutter at AS220 Labs

CHECKLIST OF THE EXHIBITION

Jonathan Bonner, draftsman

American, b. 1947

Cross Section #30, 1997

Oil pigment on paper

Museum purchase: Gift of the Artists' Development Fund of the RI Foundation 1999.17.3



Brian Shure

American, b. 1952

Geku, 2000

Spitbite aquatint, drypoint, and burnishing, printed in metallic ink on indigo paper, mounted on a silk scroll

Mary B. Jackson Fund 2001.6



RISD MUSEUM

Robert Dilworth
American, b. 1951
Terminal Domestic Behavior, 1999
Acrylic, oil stick, and house paint on paper
Gift of Dr. and Mrs. Joseph A. Chazan 2001.82.2



Entang Wiharso
Indonesian, b.1967
I'm the Sweetest Teddy Bear, Hurting Landscape, 2002
Oil on canvas
Gift of Dr. William G. Tsiras 2003.35



Catherine Curtis
American, b.1957
Untitled #2, 2002
Graphite, tempera, and ink on panel
Gift of Gretchen and William Viall 2004.37



Dana Simmons
American, b.1945
Meghan and Chris (mohawk), from the series "Club Hell", 2003
Color inkjet print
Gift of the artist 2005.107.11



Dana Simmons
American, b.1945
Man with Spiked Mask (Anthony), from the series "Club Hell", 2002
Color inkjet print
Gift of the artist 2005.107.13



Dana Simmons
American, b.1945
Couple Kissing Under Spotlight, from the series "Club Hell", 2002
Color inkjet print
Gift of the artist 2005.107.15

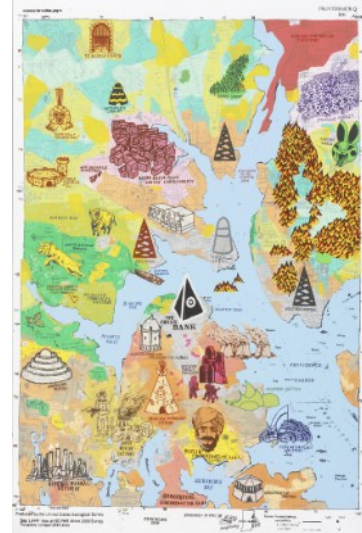


RISD MUSEUM

Dana Simmons
American, b.1945
Avica and Bethany Embrace, from the series "Club Hell", 2003
Color inkjet print
Gift of the artist 2005.107.17



Brian Chippendale
American, b. 1973
Providence 2046, From the portfolio *Printed and Pinned*, 2005
Color screenprint on paper
Museum purchase: Gift of the Artists' Development Fund of the
Rhode Island Foundation 2005.76.1



Jungil Hong
American, b.1976
Ki Yosei, From the portfolio *Printed and Pinned*, 2005
Color screenprint on paper
Museum purchase: Gift of the Artists' Development Fund of the
Rhode Island Foundation 2005.76.3



RISD MUSEUM

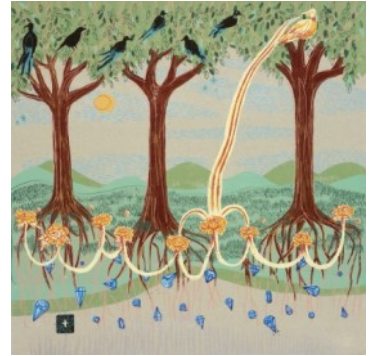
Andrew Moon Bain

American, b. 1974

Mineral Water Song, From the portfolio Printed and Pinned, 2005

Color screenprint on paper

Museum purchase: Gift of the Artists' Development Fund of the Rhode Island Foundation 2005.76.7



Pippi Zornoza

American, b.1978

Eagle Heart and Wildcat, Printed and Pinned, 2005

Color screenprint on nylon

Museum purchase: Gift of the Artists' Development Fund of the Rhode Island Foundation 2005.76.9



Jane Masters

American; English, b.1962

Control Freak, 2005

Pierced and singed paper

Museum purchase: Gift of the Artists' Development Fund of the Rhode Island Foundation 2006.16



RISD MUSEUM

William Schaff
American, b.1973
Providence, 2003
Scratchboard
Museum purchase: Gift of the Artists' Development Fund of the
Rhode Island Foundation 2006.43



Ida Schmulowitz
American, b.1951
Studio View Looking North/Sunset, 2004
Gouache and watercolor on paper
Gift of Ruth Dealy 2006.70



Ruth Dealy
American, b.1947
Greenlake, 1979
Acrylic on raw canvas
Gift of Marci and Darren Yesser in memory of Gary Yesser 2006.76



James Reynolds
American, b.1962
Views of Time #3, 2006
Gold leaf, enamel paint and grease pencil on tin-plated steel, oak
frame and shelf
Gift from the Collection of Dr. and Mrs. Joseph A. Chazan 2007.92.1



RISD MUSEUM

Nicole Chesney
American, b.1971

Bide, 2007

Oil paint on acid-etched glass

Gift from the Collection of Dr. and Mrs. Joseph A. Chazan 2007.92.2



Andrew Raftery
American, b.1962

Scene One, From the series Open House, 2008

Engraving on paper

Gift of Andrew Raftery in honor of Norberto Massi 2008.109.1



Andrew Raftery
American, b.1962

Scene Two, From the series Open House, 2008

Engraving on paper

Gift of Andrew Raftery in honor of Norberto Massi 2008.109.2

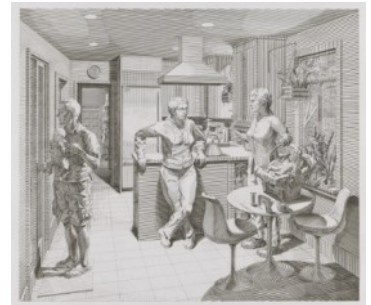


Andrew Raftery
American, b.1962

Scene Three, from the series Open House, 2008

Engraving on paper

Gift of Andrew Raftery in honor of Norberto Massi 2008.109.3



Andrew Raftery
American, b.1962

Scene Four, From the series Open House, 2008

Engraving on paper

Gift of Andrew Raftery in honor of Norberto Massi 2008.109.4



RISD MUSEUM

Andrew Raftery
American, b.1962
Scene Five, From the series Open House, 2008
Engraving on paper
Gift of Andrew Raftery in honor of Norberto Massi 2008.109.5



David Barnes
American, b.1964
Yellow Suits, 2008
Watercolor over graphite on paper
Gift of the artist 2009.109



Tina Barney
American, b.1945
The Reflection, 1994
Chromogenic print
Gift of Kristina Olsen 2010.14



Joan Backes
American, b. 1950
#1, from the "Berlin Series" 2012
Graphite on paper
Museum purchase: gift of Joseph A. Chazan, MD 2012.112.1



RISD MUSEUM

Joan Backes
American, b. 1950
#2, from the "Berlin Series", 2012
Graphite on paper
Museum purchase: gift of Joseph A. Chazan, MD 2012.112.2



Joan Backes
American, b. 1950
#3, from the "Berlin Series", 2012
Graphite on paper
Museum purchase: gift of Joseph A. Chazan, MD 2012.112.3



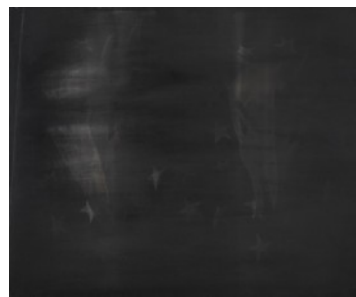
Joan Backes
American, b. 1950
#4, from the "Berlin Series", 2012
Graphite on paper
Museum purchase: gift of Joseph A. Chazan, MD 2012.112.4



Anne Morgan Spalter, video artist
American, b.1965
Factory, 2011
High-definition video
Gift of Steven G. Perelman 2012.19

RISD MUSEUM

Duane Slick
American, b. 1961
Vestige (3AM Light), 2010
Acrylic on linen
Gift of Joseph A. Chazan, MD 2012.55



Mark Freedman
American, b. 1949
Sunrise, 2011
Oil and enamel on wood panel
Gift of Ruth Dealy 2012.93



Monica Shinn
American, b. 1955
Antonio, 2012
Oil and pencil on wood panel
Mary B. Jackson Fund 2013.1



Georgia Marsh
American, b.1950
Cold Moon X, 2003
Conte crayon on paper
Museum purchase: gift of Joseph A. Chazan, MD 2013.10.2



RISD MUSEUM

Ernest Jolicoeur

American, b. 1967

Ocean Sprayed, 2010

Ink, watercolor, graphite, marker, colored pencil, and wax crayon
collage, hand-stitched with clear thread

Mary B. Jackson Fund 2013.11.1



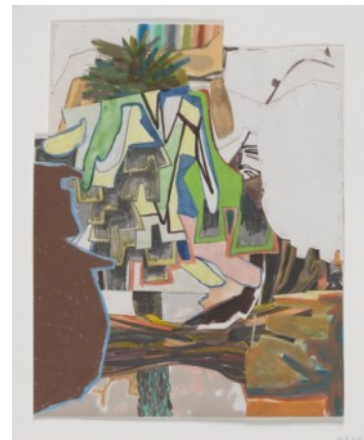
Ernest Jolicoeur

American, b. 1967

Up and Out, 2010

Ink, watercolor, graphite, marker, colored pencil, and wax crayon
collage, hand-stitched with clear thread

Mary B. Jackson Fund 2013.11.2



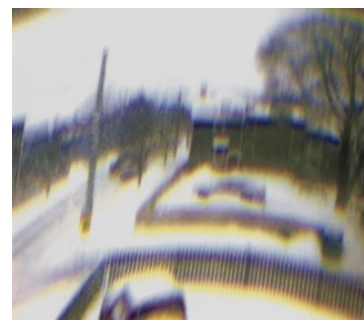
Henry Felton Brown

American, b. 1985

#3 Division St., 2013

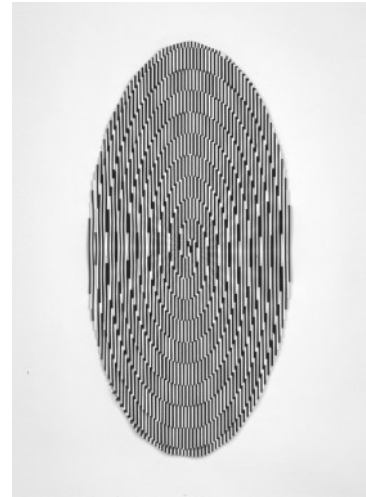
Color photo screenprint on paper

Artists Development Fund and the AS220 Print Purchase Prize
2013.12



RISD MUSEUM

Ara Peterson
American, b.1973
Forced Spiral 3, 2012
Acrylic on wood
Helen M. Danforth Acquisition Fund 2013.2



Jean Blackburn
American, b.1957
Template, 2002
Oil paint on wood, smaller chair cut from the larger
Museum purchase: gift of Joseph A. Chazan, MD 2013.3



Jessica Deane Rosner
American, b. 1958
The Election Gloves, 2011 - 2013
Rubber gloves, ink, embroidery, framed fabric flag, wooden shelf
Helen M. Danforth Acquisition Fund 2013.30



Bronlyn Jones
American, b. 1954
Rachel Whiteread, graph paper, circa 1990, From the series Drafts of an Empty Page 2012
Graphite and colored pencil on butcher paper
Mary B. Jackson Fund 2013.39.3

RISD MUSEUM

Shawn Gilheeny
American, b.1980
The Complete, 2009
Acrylic and house paint on burned and carved wood panel
Museum purchase: gift of Joseph A. Chazan, MD 2013.4



Maria Napolitano
American, b.1949
Garden Close-Ups/Toy Soldiers 2, 2011
Oil on canvas
Museum purchase: gift of Joseph A. Chazan, MD 2013.5

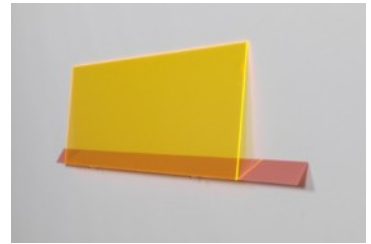


Dean Snyder
American, b.1953
Daphne's Pendant, 2008
Candy and metal-flake auto paint over carbon-fiber/ epoxy composite
Mary B. Jackson Fund 2013.6



RISD MUSEUM

Lynne Harlow
American, b.1968
Shake Some Action, 2006
Plexiglas and nails
Mary B. Jackson Fund 2013.7.1



Allison Bianco
American, b. 1979
The Sinking of Matunuck, 2012
Soft-ground etching and color screenprint triptych on paper
Mary B. Jackson Fund 2013.8



Sue McNally
American, b. 1967
Hmm, from the series "Self Portrait as...", 2009
Ink on paper
Museum purchase in honor of Judith Tannenbaum, Gift of Joseph A. Chazan, MD 2013.9.1



Sue McNally
American, b. 1967
Self Portrait as Pete Converse, from the series "Self Portrait as...", 2012
Ink, watercolor, and charcoal on paper
Museum purchase in honor of Judith Tannenbaum, Gift of Joseph A. Chazan, MD 2013.9.2



Sue McNally
American, b. 1967
Red Head 3, from the series "Self Portrait as...", 2012
Ink on paper
Museum purchase in honor of Judith Tannenbaum, Gift of Joseph A. Chazan, MD 2013.9.3



RISD MUSEUM

Sue McNally

American, b. 1967

Tank Top, from the series "Self Portrait as...", 2010

Ink, watercolor, and gesso on paper

Museum purchase in honor of Judith Tannenbaum, Gift of Joseph A. Chazan, MD 2013.9.4



Sue McNally

American, b. 1967

Scarf Head, from the series "Self Portrait as...", 2012

Charcoal on paper

Museum purchase in honor of Judith Tannenbaum, Gift of Joseph A. Chazan, MD 2013.9.5



Sue McNally

American, b. 1967

Purple Sweater, from the series "Self Portrait as...", 2011

Ink on paper

Museum purchase in honor of Judith Tannenbaum, Gift of Joseph A. Chazan, MD 2013.9.6



Sue McNally

American, b. 1967

Stare, from the series "Self Portrait as...", 2009

Ink and watercolor on paper

Museum purchase in honor of Judith Tannenbaum, Gift of Joseph A. Chazan, MD 2013.9.7



Sue McNally

American, b. 1967

Lips, from the series "Self Portrait as...", 2010

Ink on paper

Museum purchase in honor of Judith Tannenbaum, Gift of Joseph A. Chazan, MD 2013.9.8



RISD MUSEUM

Sue McNally

American, b. 1967

Untitled, from the series "Self Portrait as...", 2011

Ink on paper

Museum purchase in honor of Judith Tannenbaum, Gift of Joseph A. Chazan, MD 2013.9.9



Magaly Ponce

Chilean

De Agua y Sal, 2008

Video recording on DVD; 3:57

Courtesy of Magaly Ponce TL106.2013



Ed Osborn

b. 1964

Albedo Prospect (excerpt), 2012

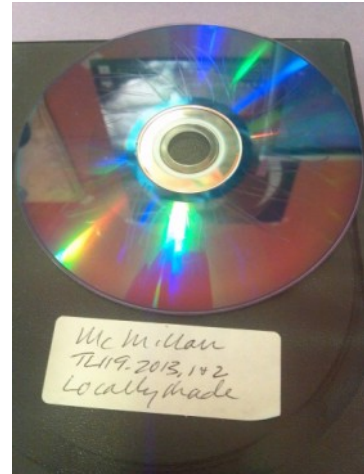
High-definition video, B/W, stereo sound; 7:23

Courtesy of the artist and Catherine Clark Gallery, San Francisco
TL118.2013

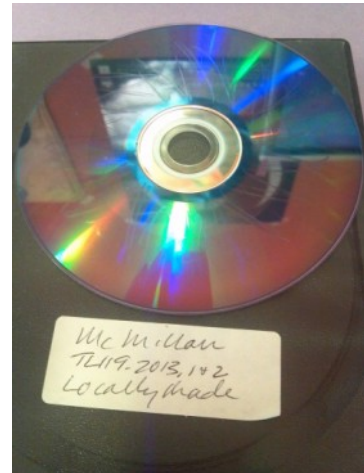


RISD MUSEUM

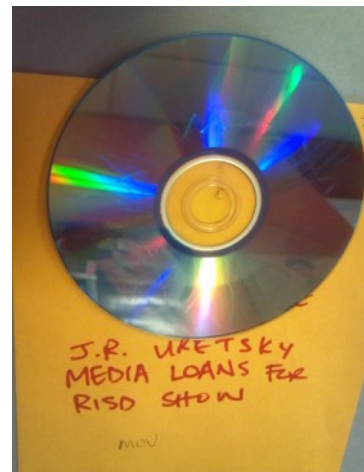
Megan and Murray McMillan
Megan b.1975, Murray b.1973
While She Waits for the Light, 2009
High-definition video; 1:31 min.
Courtesy of the artist TL119.2013.1



Megan and Murray McMillan
Megan b.1975, Murray b.1973
What We Loved and Forgot, 2010
High-definition video; 2:06 min.
Courtesy of the artist TL119.2013.2

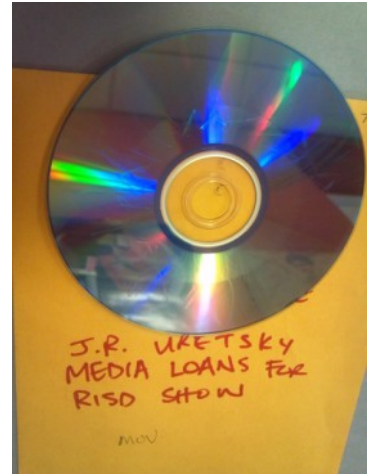


J.R. Uretsky
b. 1985
Aggressive Love: The McMillan Family, 2011
Video, single channel: 5:00 min
Courtesy of J.R. Uretsky TL120.2013.1



RISD MUSEUM

J.R. Uretsky
b. 1985
Fort, 2011
Video, single channel: 2:35 min
Courtesy of J.R. Uretsky TL120.2013.2



Xander Marro
American, b. 1973
Pattern of Ritual,
16 mm film; Running time: 7:44
Courtesy of Xander Marro TL125.2013.1

Xander Marro
American, b. 1973
Spell Casting Mishaps, 2011
Video; Running time: 1:14
Courtesy of Xander Marro TL125.2013.3

Tony Cokes
American, b. 1956
Evil.16. Torture Musik, 2011
Digital video (17 min.)
Courtesy of Tony Cokes TL126.2013.1

Tony Cokes
American, b. 1956
*evil.48: fn.kno.it.all*s, 2012
Digital video (5 min.)
Courtesy of Tony Cokes TL126.2013.2

RISD MUSEUM

Chris Taylor

b. 1970

Small Craft Advisory, 2009

Video; 8 min.

Courtesy of Chris Taylor TL127.2013