

RISD MUSEUM

Jim Isermann: Logic Rules, November 17, 2000-March 4, 2001

Jim Isermann is known for formally rigorous, optically dynamic work that stands at the forefront of the cross-fertilization of art and design. For this exhibition, Isermann has created wall-to-wall carpeting based on a modular geometric pattern. Almost three hundred identical 36"-square carpet tiles, printed in red and yellow, are centered on a grid. The tiles have been rotated in two directions so that sequences of five different shapes occur diagonally across the floor.

In collaboration with Judith Tannenbaum, RISD's Curator of Contemporary Art, Isermann selected the objects on the walls and floor from the Museum's collection. Resonating with his interests in geometric forms and logical systems, these include abstract painting, sculpture, furniture and decorative art, works on paper, and textiles dating from the 1920s to the 1970s, arranged chronologically (clockwise around the room, starting at the northeast wall), except where scale or sensitivity to light made this unreasonable.

By exhibiting nonutilitarian "fine art" together with examples of "applied art," *Logic Rules* underscores how art and design are inseparable in everyday life and how the handmade coexists with the mass-produced. Particular artistic styles or movements may go in and out of fashion, but the inherent beauty of repeated patterns and colors will always enliven our environment.

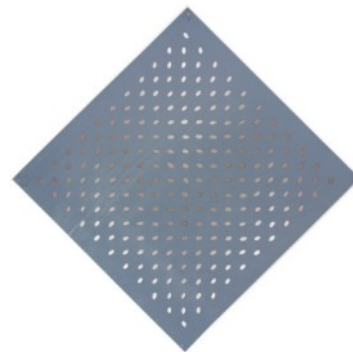
CHECKLIST OF THE EXHIBITION

Victor Vasarely, French, 1908 - 1997
Planetary Folklore Participations No. 1, 1969
Plastic and metal
Gift of Mr. and Mrs. Roger Sonnabend 80.055



RISD MUSEUM

Bridget Riley, British, b. 1931
Study for Deny IV, 1966
Gouache and graphite on paper
Gift of Richard Brown Baker 1996.11.45



Donald Judd, American, 1928-1994
Composition, 1967
Stainless steel
Museum Membership Fund 71.147



Clement L. Meadmore, American, 1929-2005
Three-Up, 1977
Corten steel
The Albert Pilavin Memorial Collection of 20th Century American Art
77.044

Robert Morris, American, b. 1931
Composition, 1967
Plastic
Museum Membership Fund 71.148

RISD MUSEUM

Edgar Negret, Colombian, b. 1920
The Bridge (Homage to Paul Foster), 1968
Painted aluminum
Nancy Sayles Day Collection of Modern Latin American Art 69.079



Louise Nevelson, American, 1899-1988
Untitled, ca. 1955-1958
Painted wood
The Albert Pilavin Memorial Collection of 20th Century American Art
73.124

Louise Nevelson, American, 1899-1988
Untitled, undated
Painted wood
Gift of the Bayard and Harriet K. Ewing Collection 1992.125

George Rickey, American, 1907 - 2002
Four Squares Diagonal II, 1976
Brushed stainless steel
Gift of the Philip M. Stern 1993.045

RISD MUSEUM

Lucas Samaras, American, b. 1936

Stiff Box No. 6, 1971

Cor-Ten steel

The Albert Pilavin Memorial Collection of 20th Century American Art
75.057



Alexander Calder, American, 1898-1976

A Mobile with a Stable Tail, 1947

Painted metal

Gift of Mr. Richard Brown Baker 1987.064



Jésus Rafael Soto, Venezuelan, 1923 - 2005

Green and Black Immaterial Curves, 1966

Wood, metal, and paint

Nancy Sayles Day Collection of Modern Latin American Art 66.152

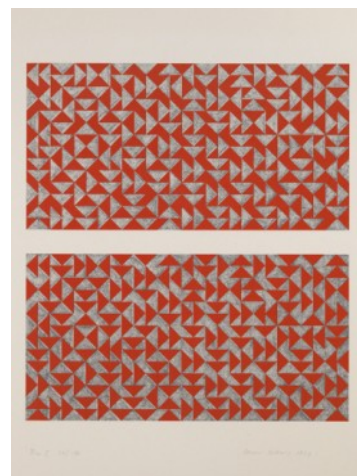


RISD MUSEUM

Hans Arp, French, 1886-1966
Configuration, 1926
Painted wood
Gift of Mrs. George H. Warren, Jr. 66.356



Anni Albers, American, 1899-1994
Fox Press
Fox I, 1972
Color photo-offset lithograph
Gift of Katharine and Nicholas Weber 80.087



Anni Albers, American, 1899-1994
Fox Press
Fox II, 1972
Color photo-offset lithograph
Gift of Katharine and Nicholas Weber 80.086

Richard Joseph Anuszkiewicz, American, b. 1930
Untitled, 1973
Color screenprint
Gift of Arthur and Carol Goldberg 76.087

RISD MUSEUM

Jasper Johns, American, b. 1930
Bill Goldston, American, 20th century
Universal Limited Art Editions
James V. Smith
Juda Rosenberg
Scent, 1975-1976
Color lithograph, linocut, and woodcut on handmade Twinrocker
paper
Museum purchase with funds from the National Endowment for the
Arts 76.009

Jasper Johns, American, b. 1930
Bill Goldston, American, 20th century
Universal Limited Art Editions
James V. Smith
Corpse and Mirror, 1976
lithograph on German etching paper
Jesse Metcalf Fund 77.060

Donald Judd, American, 1928-1994
Galerie Heiner Fredrich
Diptych, 1961-1975
Woodcut on paper
Mary B. Jackson Fund 77.127

Donald Judd, American, 1928-1994
Diptych, 1961-1975
Woodcut on paper
Mary B. Jackson Fund 77.127A

RISD MUSEUM

Donald Judd, American, 1928-1994
Dptych, 1961-1975
Woodcut on paper
Mary B. Jackson Fund 77.127B

Ellsworth Kelly, American, 1923 - 2015
Pole, 1957
Oil on canvas
The Albert Pilavin Memorial Collection of 20th-Century American Art
68.053



Jan Schoonhoven, Dutch, 1914 - 1994
Slant Levels in Four Directions, 1966
Painted cardboard on wood
Gift of Mr. Roy R. Neuberger 67.164



RISD MUSEUM

Will Insley, American, b. 1929
Untitled, 1966
Acrylic on masonite
Gift of Mr. Arthur Goldberg 80.168

Marimekko, Finnish, established 1951
Maija Isola, Finnish, 1927-2001
Melooni, 1963
Cotton; plain weave, screenprinted
Gift of Mrs. Phyllis Lloyd 1988.051



Jim Isermann, American, b. 1955
Milliken Carpet, American
Untitled (carpet tile) (1100), 2000
Tufted nylon on polyurethane backing, wet-dye injection printed; 288
tiles
Museum Acquisition Fund 2001.69



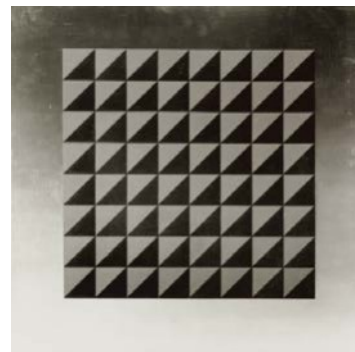
RISD MUSEUM

Roberto Aizenberg, Argentine, 1928 - 1996

Pintura, 1966-1967

Oil on canvas

Nancy Sayles Day Collection of Modern Latin American Art 68.054

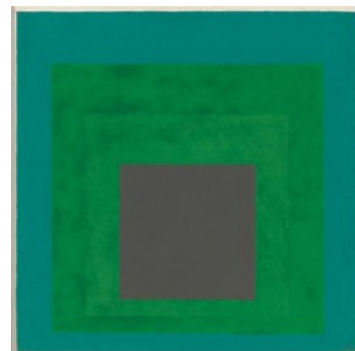


Josef Albers, American, b. Germany, 1886-1976

Study for Homage to the Square, Concentric, 1960

Oil on masonite

Gift of Josef Albers 69.213

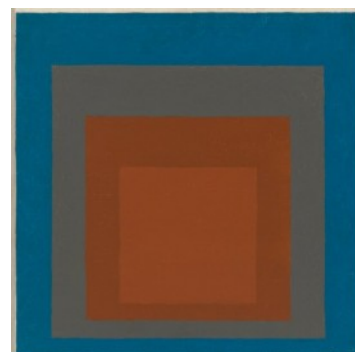


Josef Albers, American, b. Germany, 1886-1976

Study for Homage to the Square, Excentric, 1961

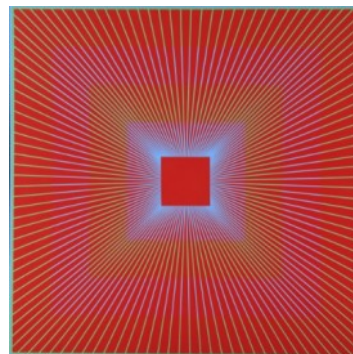
Oil on masonite

Gift of Josef Albers 69.214



RISD MUSEUM

Richard Anuszkiewicz, American, b. 1930
Primary Hue, 1964
Acrylic on canvas
Gift of Richard Brown Baker 72.098



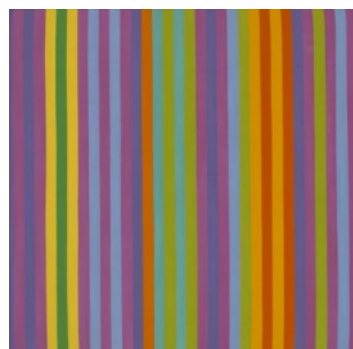
Olle Baertling, Swedish, 1911-1981
Irabamak, 1962
Oil on canvas
Gift of Mr. and Mrs. Walter Pharr 66.003



Carlos Cruz-Diez, Venezuelan, b. 1925
Physichromie No. 346, 1967
Plastic and cellulose on board
Nancy Sayles Day Collection of Modern Latin American Art 68.103

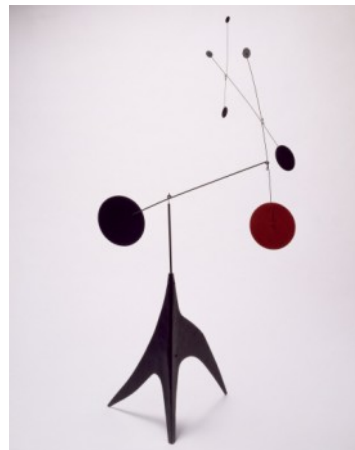


Gene Davis, American, 1920-1985
Popsicle, 1969
Acrylic on canvas
Gift of Mr. Arthur J. Levy 72.173



RISD MUSEUM

Alexander Calder, American, 1898-1976
Untitled, ca. 1957
Painted steel
Gift of Marcel Breuer 70.124



Hans Hofmann, American, 1880-1966
Abstraction (red-yellow contra blue-black), 1954
Oil on canvas
The Albert Pilavin Memorial Collection of 20th-Century American Art
72.034



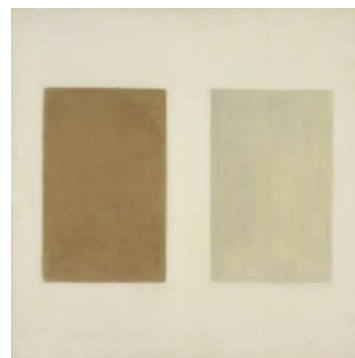
Bridget Riley, British, b. 1931
Kelpra Press
Juda Rowan Gallery
Nineteen Greys, 1968
Color screenprint
Twentieth Century Graphics Fund 72.148

RISD MUSEUM

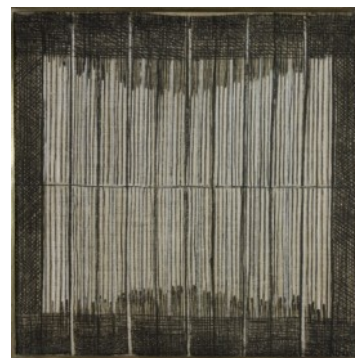
Robert Mangold, American, b. 1937
Distorted Circle within a Polygon II, 1972
Acrylic and graphite on shaped canvas
The Albert Pilavin Memorial Collection of 20th-Century American Art
73.018



Agnes Martin, American, 1912-2004
America, 1958-1959
Oil on canvas
Albert Pilavin Collection of Twentieth-Century American Art 72.093



Agnes Martin, American, 1912-2004
Untitled, 1960
Oil on canvas
Gift of the Bayard and Harriet K. Ewing Collection 1993.105.12



RISD MUSEUM

Alice Trumbull Mason, American, 1904-1971
L'Hasard, 1948-1949
Oil on masonite
Helen M. Danforth Acquisition Fund 78.028

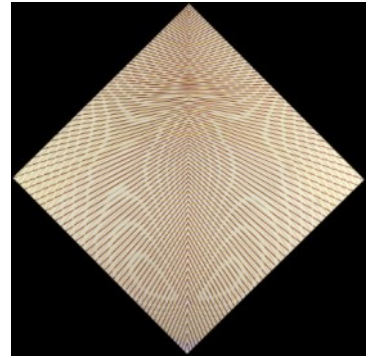


Ad Reinhardt, American, 1913-1967
No. 18, 1956
Oil on canvas
Gift of Richard Brown Baker 1996.11.43



RISD MUSEUM

Peter Sedgley, English, b. 1930
Trace, 1964
Oil on board
Gift of Richard Brown Baker 1996.11.49



Charles Green Shaw, American, 1892-1974
Untitled #6689, ca. 1938-40
Oil on canvas board
Gift of Charles Carpenter 1986.110.1

Charles Green Shaw, American, 1892-1974
Untitled #6690, ca. 1938-40
Oil on canvas board
Gift of Charles Carpenter 1986.110.2

John Walter Stephan, American, 1906-1995
Disk #1, 1978
Acrylic on canvas
Gift of a friend of Mr. Roy E. Carr in memory of Elizabeth Carr 79.083



RISD MUSEUM

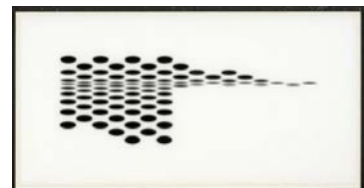
Elsa Gramcko, Venezuelan, 1925-1994
Arriba No. 27, 1959
Acrylic on canvas
The Nancy Sayles Day Collection of Modern Latin American Art
69.207



Russel Wright, American, 1904-1976
Bartlett Collins Glass Co., American, 1914-
Eclipse Old Fashioned Glass, 1957
Glass with decals
Gift of Jan Howard and Dennis Teepe 2000.47.12



Bridget Riley, British, b. 1931
Untitled (Fragment 7/5), Fragments 1965
Screenprint on Perspex
Gift of Mr. and Mrs. Roger Sonnabend 80.047



Jens Quistgaard, Danish, 1919 - 2008
Dansk International Designs Ltd., Danish, founded 1954
Salad Bowl and Servers, ca. 1960
Teak
Gift of Hannah Myers 1990.122

RISD MUSEUM

Eero Saarinen, American, 1910-1961
Knoll International, Inc., American, 1938-
Tulip Armchair (model 150), 1955-1956
Fiberglass-reinforced plastic, cast aluminum, wool
Gift of The Athenaeum Bookbinders 1998.32



Russel Wright, American, 1904-1976
Bartlett Collins Glass Co., American, 1914-
Eclipse Zombie Glass, 1957
Glass with decals
Gift of Jan Howard and Dennis Teepe 2000.47.7



RISD MUSEUM

Russel Wright, American, 1904-1976
Bartlett Collins Glass Co., American, 1914-
Eclipse Double Old Fashioned Glass, 1957
Glass with decals
Gift of Jan Howard and Dennis Teepe 2000.47.8



Russel Wright, American, 1904-1976
Bartlett Collins Glass Co., American, 1914-
Eclipse Cordial Glass, 1957
Glass with decals
Gift of Jan Howard and Dennis Teepe 2000.47.9



Verner Panton, Danish, 1926-1998
Plus-linje, Danish, 1959-
Cone Chair, 1959
Aluminum, chrome-plated steel, plywood, wool
Gift of Barry Friedman and Patricia Pastor 84.233.5



RISD MUSEUM

Russel Wright, American, 1904-1976
Bartlett Collins Glass Co., American, 1914-
Eclipse Highball Glass, 1957
Glass with decals
Gift of Jan Howard and Dennis Teepe 2000.47.11



Gertrud Natzler, American, 1908-1971
Otto Natzler, American, 1908-2007
Bottle, 1968
Stoneware with glaze
Gift of Mr. and Mrs. William A. Small, Jr. 1999.71.3



Russel Wright, American, 1904-1976
Morgantown Glass Works, American, 1899-1965
American Modern Iced Tea Glass, 1951
Glass
Gift of Jan Howard and Dennis Teepe 2000.47.1



RISD MUSEUM

Russel Wright, American, 1904-1976
Morgantown Glass Works, American, 1899-1965
American Modern Water Glass, 1951
Glass
Gift of Jan Howard and Dennis Teepe 2000.47.2



Russel Wright, American, 1904-1976
Morgantown Glass Works, American, 1899-1965
American Modern Juice Glass, 1951
Glass
Gift of Jan Howard and Dennis Teepe 2000.47.3



Russel Wright, American, 1904-1976
Morgantown Glass Works, American, 1899-1965
American Modern Goblet, 1951
Glass
Gift of Jan Howard and Dennis Teepe 2000.47.4



Russel Wright, American, 1904-1976
Morgantown Glass Works, American, 1899-1965
American Modern Wine Glass, 1951
Glass
Gift of Jan Howard and Dennis Teepe 2000.47.5



RISD MUSEUM

Russel Wright, American, 1904-1976
Morgantown Glass Works, American, 1899-1965
American Modern Cocktail Glass, 1951
Glass
Gift of Jan Howard and Dennis Teepe 2000.47.6



Marimekko, Finnish, established 1951
Annika Ramala, b. 1936
Design Research, American
Dress, 1965
Cotton; plain weave, screenprinted
Gift of Pamela Harrington 1988.027



Marimekko, Finnish, established 1951
Design Research, American
Dress, 1966
Cotton; plain weave, screenprinted
Anonymous gift 1988.045.29



RISD MUSEUM

Marimekko, Finnish, established 1951
Dress, ca. 1968
Cotton; plain weave, screenprinted
Gift of Paul and Sylvia Sapir 1991.153



Russel Wright, American, 1904-1976
Bartlett Collins Glass Co., American, 1914-
Eclipse Glass, 1957
Glass with decals
Gift of Jan Howard and Dennis Teepe 2000.47.10



Alexander Calder, American, 1898-1976
Laverne Originals, American, 1938-
Spotchy, 1949
Screenprint on paper
Abby Rockefeller Mauze Fund 82.098



Frank Stella, American, b. 1936

Multicolored Squares Portfolio, Multicolored Squares I 1972

Color lithograph on paper

Museum Purchase with funds from the National Endowment for the Arts 73.111.1



Frank Stella, American, b. 1936

Multicolored Squares Portfolio, Multicolored Squares II 1972

Color lithograph on paper

Museum Purchase with funds from the National Endowment for the Arts 73.111.2



Frank Stella, American, b. 1936

Multicolored Squares Portfolio, Multicolored Squares III 1972

Color lithograph on paper

Museum Purchase with funds from the National Endowment for the Arts 73.111.3



Frank Stella, American, b. 1936

Multicolored Squares Portfolio, Multicolored Squares IV 1972

Color lithograph on paper

Museum Purchase with funds from the National Endowment for the Arts 73.111.4



RISD MUSEUM

Frank Stella, American, b. 1936

Multicolored Squares Portfolio, Multicolored Squares I 1972

Color lithograph on paper

Museum Purchase with funds from the National Endowment for the Arts 73.111.5



Frank Stella, American, b. 1936

Multicolored Squares Portfolio, Multicolored Squares II 1972

Color lithograph on paper

Museum Purchase with funds from the National Endowment for the Arts 73.111.6



Victor Vasarely, French, 1908 - 1997

Abstraction, undated

Color screenprint

Gift of Mr. and Mrs. Raphael B. Malsin 78.203

Victor Vasarely, French, 1908 - 1997

Editions Alecto Ltd.

Alom, 1968

Color screenprint

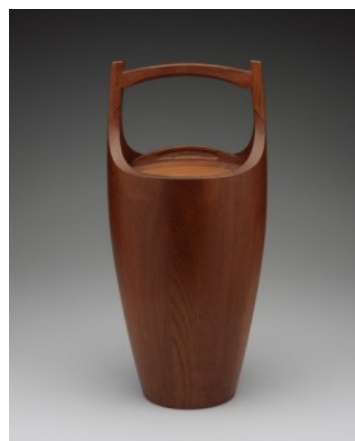
Gift of Mr. and Mrs. Roger Sonnabend 80.046

RISD MUSEUM

Alvar Aalto, Finnish, 1898-1976
Oy Huonekalu-ja Rakennustyötehdas AB, Finnish, 1910 -
Armchair (model 31), 1931-32
Laminated birch and paint
Museum Collection 84.018



Dansk International Designs Ltd., Danish, founded 1954
Jens Quistgaard, Danish, 1919 - 2008
Ice Bucket, 1960
Teak
Gift of Hannah Myers 1990.123



Harry Bertoia, American, b. Italy, 1915-1978
Knoll International, Inc., American, 1938-
427 P Chair, ca. 1965
Molded plastic, lacquered metal base
Gift of Barry Friedman and Patricia Pastor 84.233.6



RISD MUSEUM

Marimekko, Finnish, established 1951
Liisa Suvanto
Katsuji Wakisaka, Japanese
Dress, ca. 1970
Cotton; plain weave, screenprinted
Gift of Jody Klein 1995.022.1



Charles Eames, American, 1907-1978
Ray Eames, American, 1912-1988
Herman Miller Furniture Co., American, 1923-
DCW (Dining Chair Wood), 1948
Molded plywood, walnut veneer
Gift of the Bayard and Harriet K. Ewing Collection 72.097



RISD MUSEUM

Charles Eames, American, 1907-1978
Ray Eames, American, 1912-1988
Herman Miller Furniture Co., American, 1923-
Rocking Chair, ca. 1951
Wire and maple
Gift of Barry Friedman and Patricia Pastor 84.233.2



Roberto Matta, Chilean, 1911-2002; d. 2002
Knoll International, Inc., American, 1938-
Malitte Seating System, 1966
Polyurethane foam with stretch wool upholstery
Gift of Tom McHugh 1997.2.1



Roberto Matta, Chilean, 1911-2002; d. 2002
Knoll International, Inc., American, 1938-
Malitte Seating System, 1966
Polyurethane foam with stretch wool upholstery
Gift of Tom McHugh 1997.2.2



Roberto Matta, Chilean, 1911-2002; d. 2002
Knoll International, Inc., American, 1938-
Malitte Seating System, 1966
Polyurethane foam with stretch wool upholstery
Gift of Tom McHugh 1997.2.3



RISD MUSEUM

Roberto Matta, Chilean, 1911-2002; d. 2002
Knoll International, Inc., American, 1938-
Malitte Seating System, 1966
Polyurethane foam with stretch wool upholstery
Gift of Tom McHugh 1997.2.4



Roberto Matta, Chilean, 1911-2002; d. 2002
Knoll International, Inc., American, 1938-
Malitte Seating System, 1966
Polyurethane foam with stretch foam upholstery
Gift of Tom McHugh 1997.2.5



Gertrud Natzler, American, 1908-1971
Otto Natzler, American, 1908-2007
Vase, 1957
Stoneware with glaze
Gift of Mr. and Mrs. William A. Small, Jr. 1999.71.1



RISD MUSEUM

Gertrud Natzler, American, 1908-1971
Otto Natzler, American, 1908-2007
Bowl, 1965
Glazed stoneware
Gift of Mr. and Mrs. William A. Small, Jr. 1999.71.2



Harry Bertoia, American, b. Italy, 1915-1978
Knoll International, Inc., American, 1938-
Child's Chair (Model 426), 1954
Wire and leather
Gift of Dr. and Mrs. Armand Versaci 1987.077

