

Beauty at Her Fingertips: Chinese Sleeve Bands from the Aldrich Collection,

July 29, 2016-January 13, 2017

The embellished cuffs of Chinese robes are known as sleeve bands (*huan xiu*). The faces of the bands appear relatively simple and void of decoration, however when worn the oversized fit in the length of the sleeves drape to the front of the arm, revealing a highly embellished reverse. The aesthetic field of the sleeve band offered artisans the opportunity present narrative scenes such as figures and landscapes that often did not find place in other Chinese garments. The most common decorative elements are botanical, insect, and “eight-treasure” symbols. Satin woven silk is the most common ground for sleeve bands, however gauze weaves, both figured and plain, were also popular and represented in this exhibition.

The silk bands were produced independently of the robes themselves. As the bands were created autonomously of the robes many examples were never attached to a garment and have survived in pristine condition. Most examples in the Aldrich collection are prepared as bands while others are mounted on paper scrolls. Some that Aldrich collected are process examples of sleeve bands that have yet to be cut from the full textile lengths that they were worked on. Aldrich also collected related brocaded ribbons that decorated successive courses on the sleeves. Of special note in this exhibition is an example from the Museum collection that is still wrapped on its original packaging (55.243) listing a Canton address for Yu Kee Co.. From ca. 1850 on the primary manufacturing sites for silk textiles in China were Suchou, Shanghai, and Canton — in particular these sites focused on machine-woven ribbon trims. The sleeve bands and ribbons on display all date from the Tongzhi reign-period (1862-1874) and Guangxu reign-period (1875-1908).

CHECKLIST OF THE EXHIBITION

Chinese

Pair of sleeve bands (huan xiu), ca. 1862-1908

Silk satin weave with silk embroidery

Gift of Miss Lucy T. Aldrich 34.658



RISD MUSEUM

Chinese

Pair of sleeve bands (huan xiu), ca. 1862 - 1908

Silk satin weave with silk and wrapped-metallic embroidery

Gift of Miss Lucy T. Aldrich 34.659



Chinese

Pair of sleeve bands (huan xiu), ca. 1862 - 1908

Silk gauze weave with silk embroidery

Gift of Miss Lucy T. Aldrich 34.663



RISD MUSEUM

Chinese

Pair of sleeve bands (huan xiu), ca. 1862 - 1908

Silk satin weave with silk and wrapped-metallic embroidery

Gift of Miss Lucy T. Aldrich 34.666



Chinese

Pair of sleeve bands (huan xiu), ca. 1862-1908

Silk satin weave with silk embroidery

Gift of Miss Lucy T. Aldrich 34.669



RISD MUSEUM

Chinese

Pair of sleeve bands (huan xiu), ca. 1862 - 1908

Silk gauze weave with silk embroidery

Gift of Miss Lucy T. Aldrich 34.682

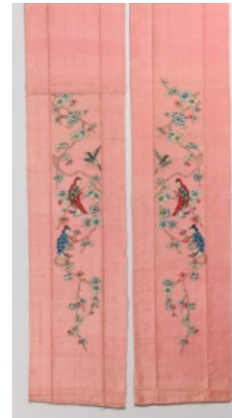


Chinese

Pair of sleeve bands (huan xiu), ca. 1862 - 1908

Silk tapestry weave (kesi) with handpainted decoration

Gift of Miss Lucy T. Aldrich 34.700



Chinese

Pair of Sleeve Bands (huan xiu), ca. 1862 - 1908

Silk satin weave with silk and wrapped-metallic embroidery and applied ribbon (huataozi)

Gift of Miss Lucy T. Aldrich 34.703



RISD MUSEUM

Chinese

Pair of sleeve bands mounted on a paper scroll, ca. 1862-1908

Figured silk with silk and wrapped-metallic embroidery

Gift of Miss Lucy T. Aldrich 34.725

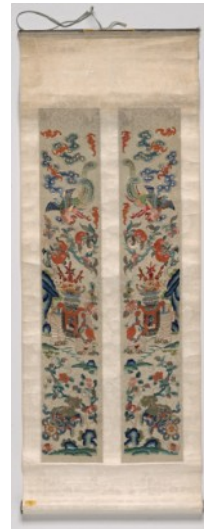


Chinese

Pair of sleeve bands mounted on a paper scroll, ca. 1862-1908

Figured silk with silk and wrapped-metallic embroidery and coral bead decoration

Gift of Miss Lucy T. Aldrich 34.727



Chinese

Pair of sleeve bands mounted on a paper scroll, ca. 1862 - 1908

Silk gauze weave with silk embroidery

Gift of Miss Lucy T. Aldrich 34.731



RISD MUSEUM

Chinese

Pair of sleeve bands mounted on paper scroll, 1800 - 1899

Silk satin weave with silk, wrapped-metallic, and kingfisher-feather embroidery

Gift of Miss Lucy T. Aldrich 34.733

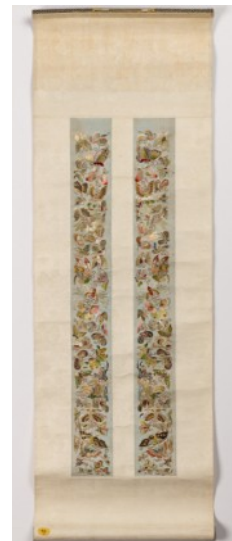


Chinese

Pair of sleeve bands mounted on a paper scroll, 1800 - 1899

Silk satin weave with silk and wrapped-metallic embroidery

Gift of Miss Lucy T. Aldrich 34.734



Chinese

Robe, 1821-1850

Silk gauze weave with silk and wrapped-metallic embroidery and applied silk ribbon (huataozi)

Gift of Miss Lucy T. Aldrich 35.394



RISD MUSEUM

Chinese

Robe, 1821-1851

Silk satin weave with silk and wrapped-metallic embroidery; applied silk satin sleeve bands and ribbon trim (huataozi)

Gift of Miss Lucy T. Aldrich 35.403

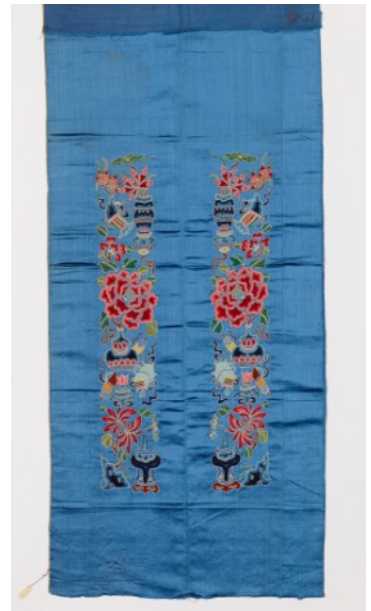


Chinese

Uncut Pair of Sleeve Bands, ca. 1862 - 1908

Silk satin weave with silk embroidery

Bequest of Miss Lucy T. Aldrich 55.235



Chinese

Uncut Sleeve Band, ca. 1862 - 1908

Silk satin weave with silk and wrapped-metallic embroidery

Bequest of Miss Lucy T. Aldrich 55.236



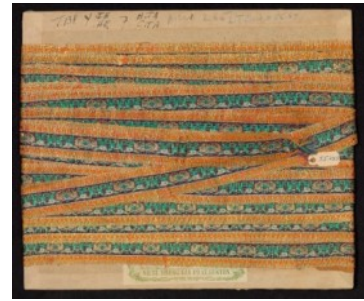
RISD MUSEUM

Chinese

Ribbon (huataozi), ca. 1862 - 1908

Silk compound weave

Bequest of Miss Lucy T. Aldrich 55.243



Chinese

Uncut Pair of Sleeve Bands, 1800 - 1899

Silk satin weave with silk embroidery

Gift of Mr. and Mrs. Winthrop W. Aldrich 58.184.11



Chinese

Uncut Sleeve Band, ca. 1862 - 1909

Silk satin weave with silk embroidery

Gift of Mr. and Mrs. Winthrop W. Aldrich 58.184.13



RISD MUSEUM

Chinese

Robe, ca. 1862-1908

Silk satin weave with metallic and silk embroidery and applied ribbon
(huataozi)

Gift of Mrs. Roger S. Greene 63.033.5

