

*Japanese Print Rotation*, May 13, 2016-December 4, 2016

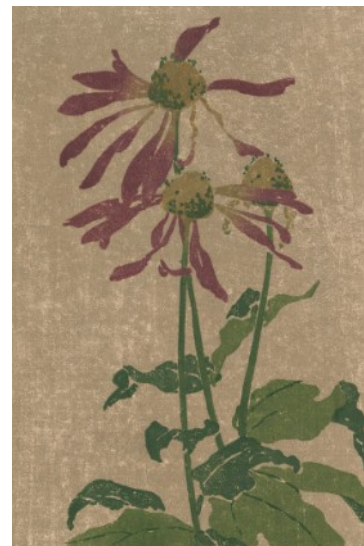
Japanese color woodblock prints had a lasting impact on artists working in the United States and Britain during the first half of the twentieth century. The subject matter, composition, and technique of these works inspired some Western artists to travel and study in Japan. Others were influenced through exhibitions, workshops, and teachers that promoted aspects of Japanese art. These educational opportunities were often accessible to women—as is evident by their representation in this display—allowing female printmakers to experiment avidly with technique and subject matter at this time. Their prints are arranged with those of Japanese artists in groups that focus on visual connections and recurring themes. Subjects such as light and night, water, landscape, the seasons, foliage, and flowers served as a starting point for these American and British artists to adapt, experiment with, and pay homage to the originality they saw in Japanese prints.

The exhibition was organized by Nancy Friese, Andrew W. Mellon Museum Faculty Fellow in the Department of Prints, Drawings, and Photographs.

Some of these prints were given to the Museum by Abby Aldrich Rockefeller (1874–1948), a daughter of Rhode Island senator Nelson W. Aldrich and the wife of John D. Rockefeller, Jr. A lifelong supporter of the arts, Mrs. Rockefeller assembled a remarkable collection of Asian woodblock prints. In all, she donated more than 700 Japanese prints to the RISD Museum.

## CHECKLIST OF THE EXHIBITION

Edna Boies Hopkins  
American, 1878-1937  
*Purple Daisy*, ca. 1907-1909  
Polychrome woodblock print  
Gift of Edna Boies Hopkins 20.042



# RISD MUSEUM

Eliza Draper Gardiner  
American, 1871-1955  
*The River*, ca. 1920  
Color woodcut on paper  
Woods-Gerry Gallery transfer 1990.066.8



Katsushika Hokusai  
Japanese, 1760-1849  
Nishimuraya Yohachi, publisher  
Japanese  
*Hakone Lake in Sagami Province (Soshu Hakone no kosui)*, from the series *Thirty-six views of Mount Fuji*, ca. 1829-1833  
Polychrome woodblock print  
Gift of Mrs. Gustav Radeke 20.1202



Frances Hammel Gearhart  
American, 1869-1958  
*High Skies*, 1922  
Polychrome woodblock print  
Gift of Scott A. Smith 22.049



Utagawa Hiroshige  
Japanese, 1797-1858  
Uoya Eikichi, publisher  
Japanese, 19th century  
*Yabukoji at the foot of Atago (Atagoshita Yabukoji)*, from the series *One hundred views of famous places (Meisho Edo hyakkei)*, 1857  
Polychrome woodblock print  
Gift of Mrs. Gustav Radeke 20.1292



# RISD MUSEUM

Elizabeth Keith  
British, 1887-1956  
*Returning From the Funeral*, 1922  
Polychrome woodblock print  
Gift of Mrs. Murray S. Danforth 34.1364



Margaret Jordan Patterson  
American, 1867-1950  
*Torcello*, 1919  
Polychrome woodblock print  
Gift of Mrs Gustav Radeke 22.056

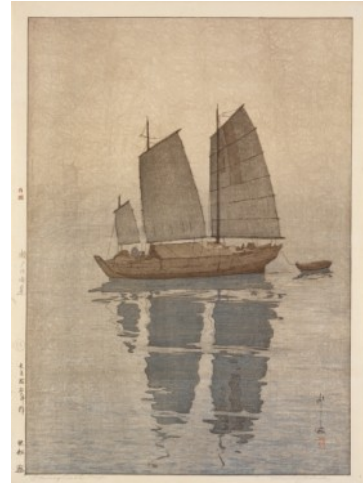


Takenouchi Magohachi, publisher  
Japanese, late 18th century-mid 19th century  
Utagawa Hiroshige  
Japanese, 1797-1858  
*Satta Pass, Yui (Yui satta mine)*, from the series *The fifty-three stations of the Tokaido (Tōkaidō gojusan tsugi no uchi)*, ca. 1833  
Polychrome woodblock print  
Gift of Mrs. John D. Rockefeller, Jr. 41.080.17



# RISD MUSEUM

Yoshida Hiroshi  
Japanese, 1876-1950  
*Sailboats, Fog (Hansen, kiri)*, from the series *Inland Sea (Seto Naikai shu)*, 1926  
Polychrome woodblock print  
Gift of the Fazzano Brothers 84.198.857



Lill Tschudi  
Swiss, 1911-2001  
*Sotto Capri*, ca. 1956  
Color linocut on paper  
Gift of Anna Elsa Zopfi 1996.120



Utagawa Kunisada  
Japanese, 1786-1865  
*Cuckoo and Moon (Tsuki ni hototogisu)*, 1828  
Polychrome woodblock print  
Gift of Mrs. John D. Rockefeller, Jr. 34.311



Emma Kaan  
American, 1860 - 1949  
Annie Crawford  
American, 1857-1942  
Charles Rohlf, frame designer  
American, 1853 - 1936  
*Pond Lily #4*, ca. 1904  
Hand-colored woodcut on paper  
Walter H. Kimball Fund 1990.011.1





# RISD MUSEUM

Emma Kaan  
American, 1860 - 1949  
Annie Crawford  
American, 1857-1942  
Charles Rohlf, frame designer  
American, 1853 - 1936  
*Evening #8*, ca. 1905-1910  
Hand-colored woodcut on paper  
Walter H. Kimball Fund 1990.011.2



Utagawa Hiroshige  
Japanese, 1797-1858  
Yamamotoya Heikichi, publisher  
Japanese  
*Night rain at Karasaki (Karasaki Yau)*, from the series *Eight views of Omi (Omi hakkei no uchi)*, ca. 1835  
Polychrome wood block print  
Gift of Mrs. Gustav Radeke 20.1280



After Kubo Shunman  
Japanese, 1757-1820  
previous attribution Hokusai  
Japanese, fl. 1789-1818  
*Iris and peonies (Kakitsubata)*, from the series *Plants for the Kasumi poetry circle (Kasumi ren somoku awase)*, 1890's  
Polychrome woodblock print with embossing and metallic embellishments  
Gift of Mrs. John D. Rockefeller, Jr. 34.353



Eliza Draper Gardiner  
American, 1871-1955  
*Cactus Flower*, ca. 1900-1920  
Polychrome woodblock print  
Gift of Elizabeth T. Casey 1989.062.2



# RISD MUSEUM

Utagawa Kunisada II  
Japanese, 1823-1880  
Tsujiya Yasubei, publisher  
previous attribution Utagawa Kunisada  
Japanese, 1786-1865  
*Herbaceous peonies and great tits (Shakuyaku ni shijukara)*, 1858  
Polychrome wood block print  
Gift of Mrs. John D. Rockefeller, Jr. 34.312



Utagawa Sadahide  
Japanese, 1807-1878 or 1879  
Iseya Soemon, publisher  
Japanese  
*Peonies (Botan)*, 1835  
Polychrome woodblock print  
Gift of Mrs. John D. Rockefeller, Jr. 34.317



Keiri  
Japanese  
*Dragonfly and Flower (Kabocho ni tonbo)*, mid 1800s  
Polychrome woodblock print  
Gift of Mrs. John D. Rockefeller, Jr. 34.402.1



Keiri  
Japanese  
*Dragonfly and Flower (Kabocho ni tonbo)*, mid 1800s  
Polychrome woodblock print  
Gift of Mrs. John D. Rockefeller, Jr. 34.402.2

